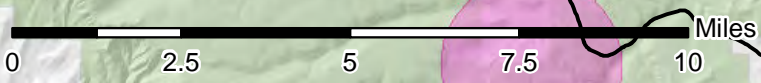
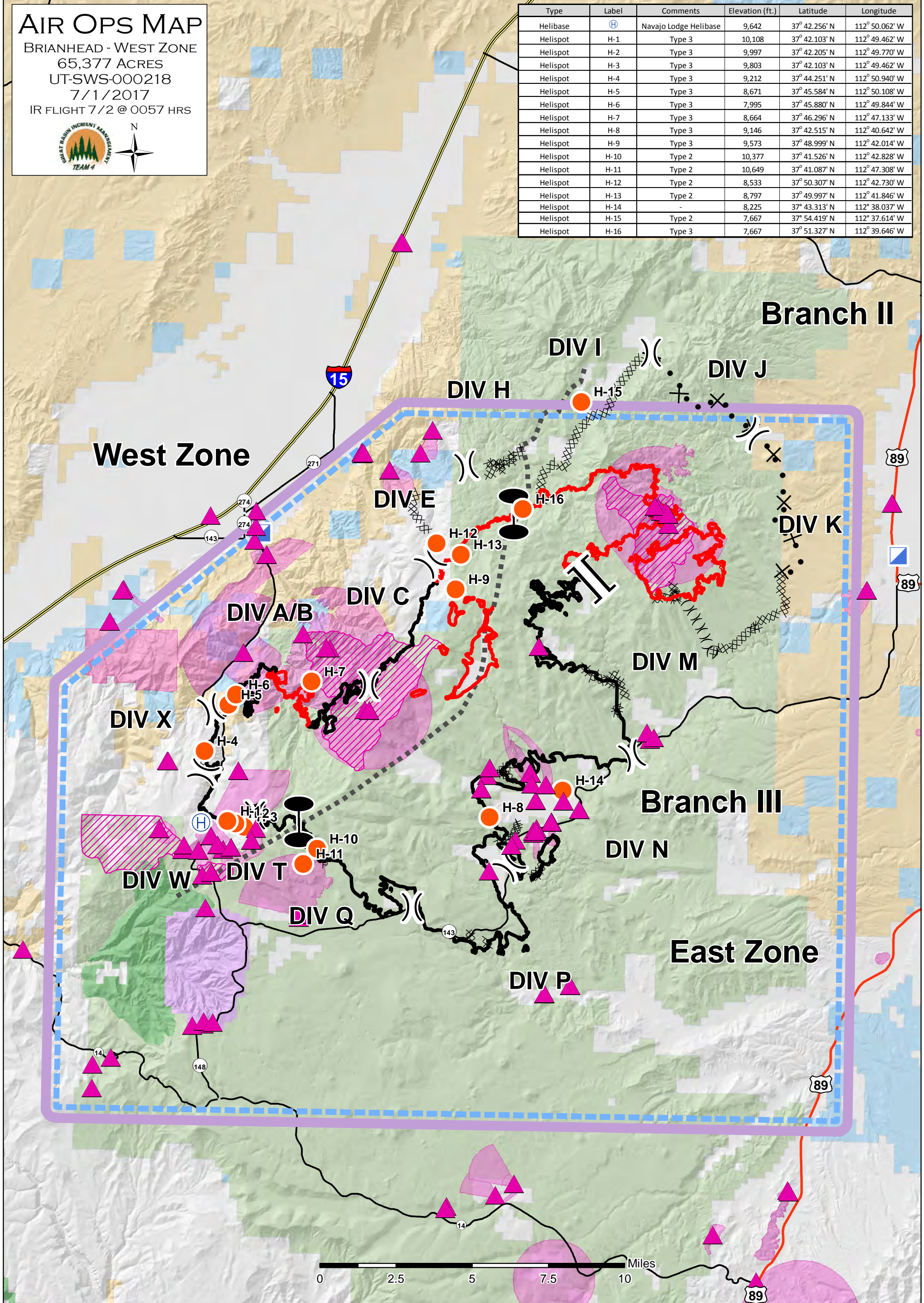


# AIR OPS MAP

BRIANHEAD - WEST ZONE  
 65,377 ACRES  
 UT-SWS-000218  
 7/1/2017  
 IR FLIGHT 7/2 @ 0057 HRS



| Type     | Label | Comments              | Elevation (ft.) | Latitude      | Longitude      |
|----------|-------|-----------------------|-----------------|---------------|----------------|
| Helibase | H-1   | Navajo Lodge Helibase | 9,642           | 37° 42.256' N | 112° 50.062' W |
| Helispot | H-2   | Type 3                | 10,108          | 37° 42.103' N | 112° 49.462' W |
| Helispot | H-3   | Type 3                | 9,997           | 37° 42.205' N | 112° 49.770' W |
| Helispot | H-4   | Type 3                | 9,803           | 37° 42.103' N | 112° 49.462' W |
| Helispot | H-5   | Type 3                | 9,212           | 37° 44.251' N | 112° 50.940' W |
| Helispot | H-6   | Type 3                | 8,671           | 37° 45.584' N | 112° 50.108' W |
| Helispot | H-7   | Type 3                | 7,995           | 37° 45.880' N | 112° 49.844' W |
| Helispot | H-8   | Type 3                | 8,664           | 37° 46.296' N | 112° 47.133' W |
| Helispot | H-9   | Type 3                | 9,146           | 37° 42.515' N | 112° 40.642' W |
| Helispot | H-10  | Type 3                | 9,573           | 37° 48.999' N | 112° 42.014' W |
| Helispot | H-11  | Type 2                | 10,377          | 37° 41.526' N | 112° 42.828' W |
| Helispot | H-12  | Type 2                | 10,649          | 37° 41.087' N | 112° 47.308' W |
| Helispot | H-13  | Type 2                | 8,533           | 37° 50.307' N | 112° 42.730' W |
| Helispot | H-14  | -                     | 8,797           | 37° 49.997' N | 112° 41.846' W |
| Helispot | H-15  | Type 2                | 8,225           | 37° 43.313' N | 112° 38.037' W |
| Helispot | H-16  | Type 2                | 7,667           | 37° 54.419' N | 112° 37.614' W |
| Helispot | H-16  | Type 3                | 7,667           | 37° 51.327' N | 112° 39.646' W |



|   |                          |                       |                |                       |            |
|---|--------------------------|-----------------------|----------------|-----------------------|------------|
| TFR                                     | Uncontrolled Fire Edge   | Helibase              | Division Break | <b>Land Ownership</b> | Private    |
| Drinking Water Sources                  | Completed Dozer Line     | Helispot              | Zone Break     | National Forest       | State      |
| Drinking Water Surface Protection Zones | Completed Line           | Incident Command Post |                | BLM                   | Wilderness |
| Municipal Watersheds                    | Proposed Dozer Line      |                       |                | National Park Service |            |
|   | Ridge/Geographic Feature |                       |                |                       |            |