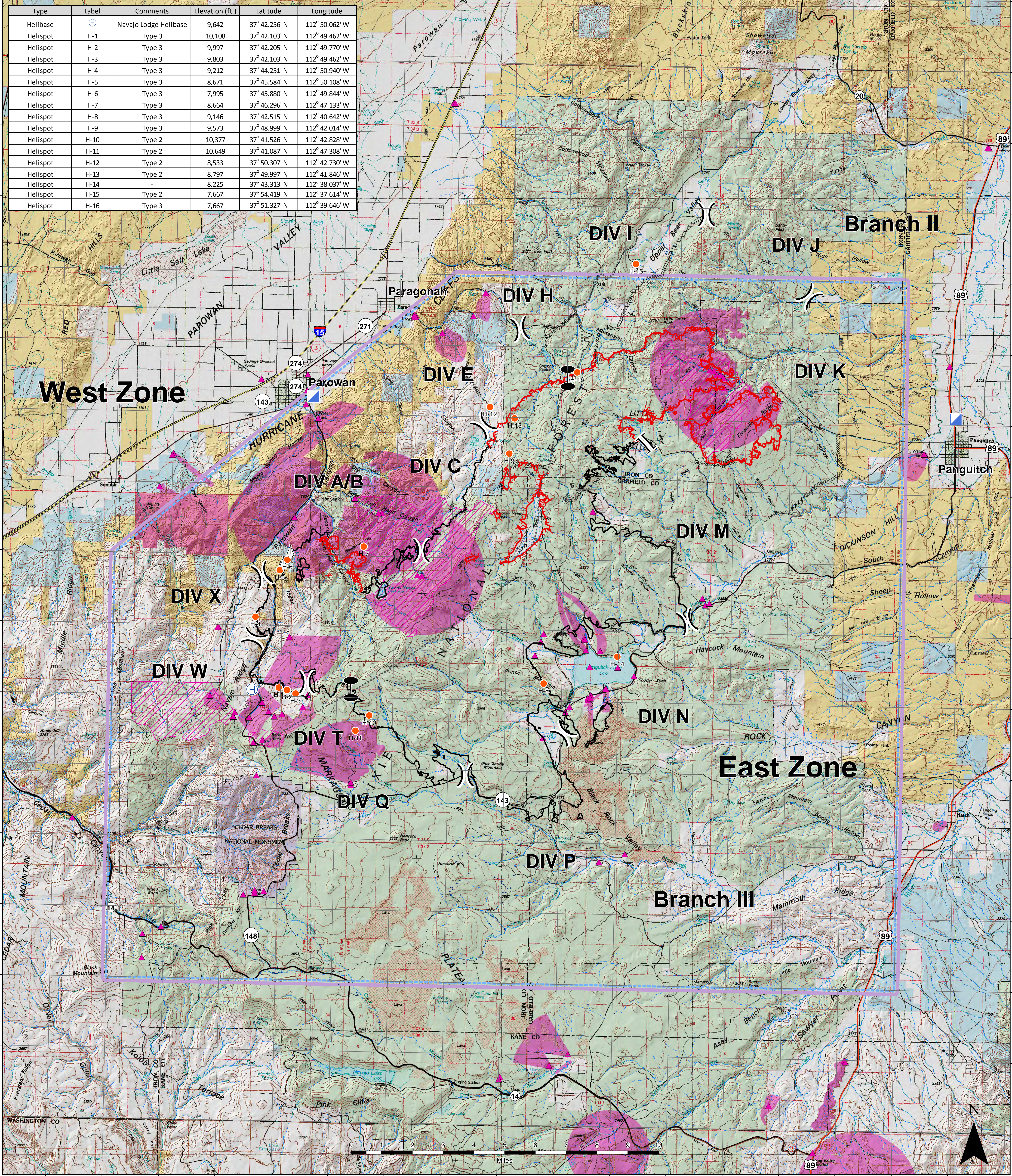


| Type | Label | Comments | Elevation (ft.) | Latitude | Longitude |
|----------|-------|-----------------------|-----------------|---------------|----------------|
| Helibase | H | Navajo Lodge Helibase | 9,642 | 37° 42.256' N | 112° 50.062' W |
| Helispot | H-1 | Type 3 | 10,108 | 37° 42.103' N | 112° 49.462' W |
| Helispot | H-2 | Type 3 | 9,997 | 37° 42.205' N | 112° 49.770' W |
| Helispot | H-3 | Type 3 | 9,803 | 37° 42.103' N | 112° 49.462' W |
| Helispot | H-4 | Type 3 | 9,212 | 37° 44.251' N | 112° 50.940' W |
| Helispot | H-5 | Type 3 | 8,671 | 37° 45.584' N | 112° 50.108' W |
| Helispot | H-6 | Type 3 | 7,995 | 37° 45.880' N | 112° 49.844' W |
| Helispot | H-7 | Type 3 | 8,664 | 37° 46.296' N | 112° 47.133' W |
| Helispot | H-8 | Type 3 | 9,146 | 37° 42.515' N | 112° 40.642' W |
| Helispot | H-9 | Type 3 | 9,573 | 37° 48.999' N | 112° 42.014' W |
| Helispot | H-10 | Type 2 | 10,377 | 37° 41.526' N | 112° 42.828' W |
| Helispot | H-11 | Type 2 | 10,649 | 37° 41.087' N | 112° 47.308' W |
| Helispot | H-12 | Type 2 | 8,533 | 37° 50.307' N | 112° 42.730' W |
| Helispot | H-13 | Type 2 | 8,797 | 37° 49.997' N | 112° 41.846' W |
| Helispot | H-14 | - | 8,225 | 37° 43.313' N | 112° 38.037' W |
| Helispot | H-15 | Type 2 | 7,667 | 37° 54.419' N | 112° 37.614' W |
| Helispot | H-16 | Type 3 | 7,667 | 37° 51.327' N | 112° 39.646' W |



AIR OPS
BRIANHEAD - WEST ZONE
65,377 ACRES
UT-SWS-000218
7/1/2017 0600 HRS
 IR IMAGERY FLOWN 7/1 @ 0057 HRS

| | | | | | | |
|---|--------------|------------------------|----------------|-----------------------|---------------------------|-----------------------|
| TFR | Streams | Uncontrolled Fire Edge | Division Break | Helibase | National Forest | National Park Service |
| Drinking Water Sources | Intermittent | Completed Line | Branch Break | Helispot | Bureau of Land Management | State |
| Municipal Watersheds | Perennial | Completed Dozer Line | Zone Break | Sling Site | Private | |
| Drinking Water Surface Protection Zones | Springs | Zone Break | | Incident Command Post | | |

