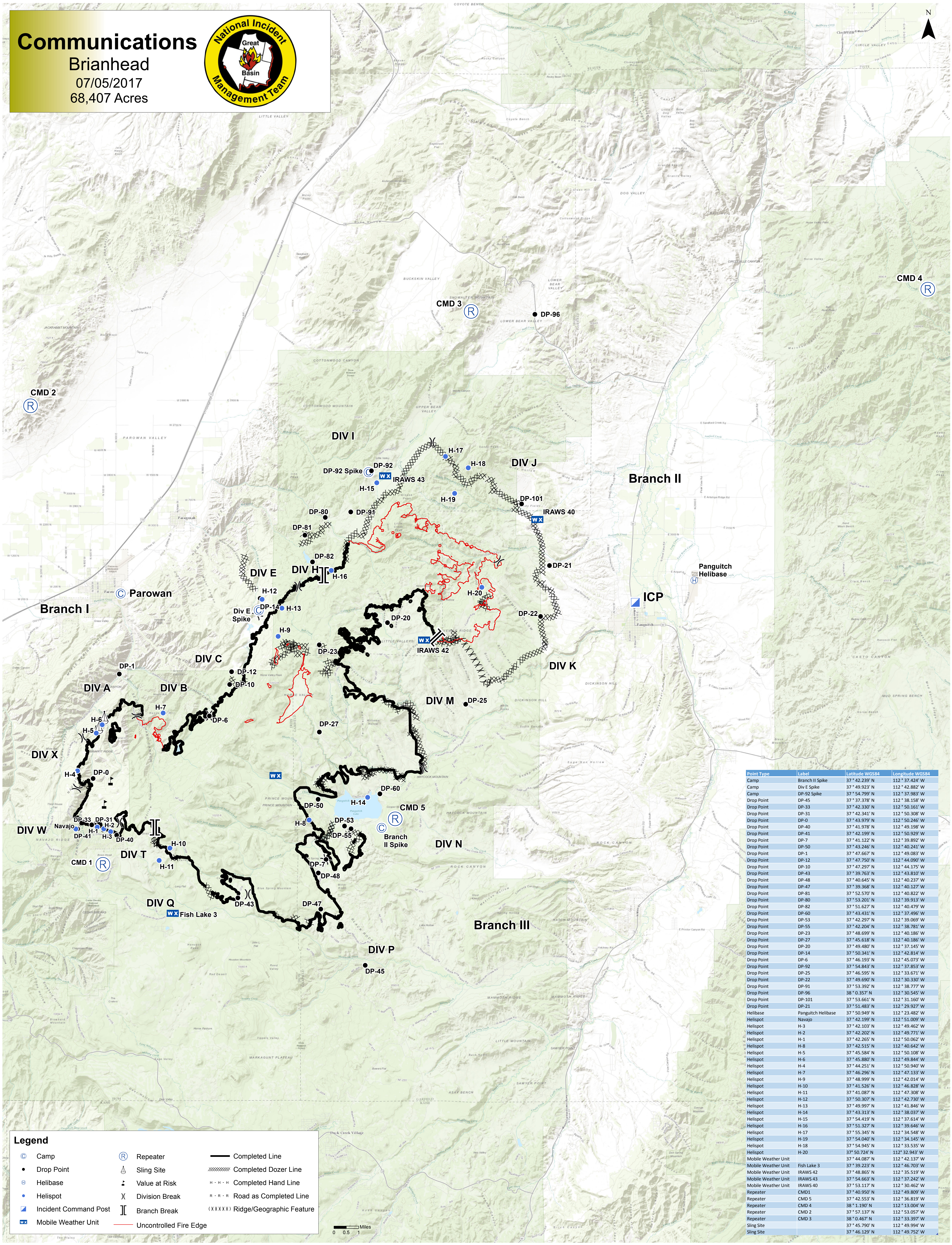


Communications

Brianhead
07/05/2017
68,407 Acres



Point Type	Label	Latitude WGS84	Longitude WGS84
Camp	Branch II Spike	37° 42.239' N	112° 37.424' W
Camp	Div E Spike	37° 49.923' N	112° 42.882' W
Camp	DP-92 Spike	37° 54.799' N	112° 37.983' W
Drop Point	DP-45	37° 37.378' N	112° 38.158' W
Drop Point	DP-33	37° 42.330' N	112° 50.161' W
Drop Point	DP-31	37° 42.341' N	112° 50.308' W
Drop Point	DP-0	37° 43.979' N	112° 50.246' W
Drop Point	DP-40	37° 41.978' N	112° 49.198' W
Drop Point	DP-41	37° 42.199' N	112° 50.929' W
Drop Point	DP-7	37° 41.122' N	112° 39.892' W
Drop Point	DP-50	37° 43.246' N	112° 40.245' W
Drop Point	DP-1	37° 47.667' N	112° 49.083' W
Drop Point	DP-12	37° 47.750' N	112° 44.090' W
Drop Point	DP-10	37° 47.297' N	112° 44.175' W
Drop Point	DP-43	37° 39.763' N	112° 43.810' W
Drop Point	DP-48	37° 40.645' N	112° 40.237' W
Drop Point	DP-47	37° 39.368' N	112° 40.127' W
Drop Point	DP-81	37° 52.570' N	112° 40.822' W
Drop Point	DP-80	37° 53.201' N	112° 39.913' W
Drop Point	DP-82	37° 51.627' N	112° 40.479' W
Drop Point	DP-60	37° 43.431' N	112° 37.496' W
Drop Point	DP-53	37° 42.297' N	112° 39.069' W
Drop Point	DP-55	37° 42.204' N	112° 38.781' W
Drop Point	DP-23	37° 48.599' N	112° 40.185' W
Drop Point	DP-27	37° 45.618' N	112° 40.186' W
Drop Point	DP-20	37° 49.480' N	112° 37.145' W
Drop Point	DP-14	37° 50.341' N	112° 42.814' W
Drop Point	DP-6	37° 46.193' N	112° 45.073' W
Drop Point	DP-92	37° 54.843' N	112° 37.853' W
Drop Point	DP-25	37° 46.595' N	112° 33.671' W
Drop Point	DP-22	37° 49.690' N	112° 30.330' W
Drop Point	DP-91	37° 53.392' N	112° 38.777' W
Drop Point	DP-96	38° 0.357' N	112° 30.545' W
Drop Point	DP-101	37° 53.661' N	112° 31.160' W
Drop Point	DP-21	37° 51.483' N	112° 29.927' W
Helibase	Panguitch Helibase	37° 50.949' N	112° 23.469' W
Helispot	Navajo	37° 42.109' N	112° 51.009' W
Helispot	H-3	37° 42.103' N	112° 49.462' W
Helispot	H-2	37° 42.202' N	112° 49.771' W
Helispot	H-1	37° 42.265' N	112° 50.062' W
Helispot	H-8	37° 42.515' N	112° 40.642' W
Helispot	H-5	37° 45.584' N	112° 50.108' W
Helispot	H-6	37° 45.880' N	112° 49.844' W
Helispot	H-4	37° 44.251' N	112° 50.940' W
Helispot	H-7	37° 46.296' N	112° 47.133' W
Helispot	H-9	37° 48.999' N	112° 42.014' W
Helispot	H-10	37° 41.526' N	112° 46.828' W
Helispot	H-11	37° 41.087' N	112° 47.308' W
Helispot	H-12	37° 50.397' N	112° 42.730' W
Helispot	H-13	37° 49.097' N	112° 41.846' W
Helispot	H-14	37° 43.313' N	112° 38.037' W
Helispot	H-15	37° 54.419' N	112° 37.614' W
Helispot	H-16	37° 51.327' N	112° 39.646' W
Helispot	H-17	37° 55.345' N	112° 34.548' W
Helispot	H-19	37° 54.040' N	112° 34.145' W
Helispot	H-18	37° 54.945' N	112° 33.535' W
Helispot	H-20	37° 50.724' N	112° 32.943' W
Mobile Weather Unit		37° 44.087' N	112° 42.137' W
Mobile Weather Unit	Fish Lake 3	37° 39.223' N	112° 46.703' W
Mobile Weather Unit	IRAWS 42	37° 48.865' N	112° 35.519' W
Mobile Weather Unit	IRAWS 43	37° 54.663' N	112° 37.242' W
Mobile Weather Unit	IRAWS 40	37° 53.117' N	112° 40.462' W
Repeater	CMD1	37° 40.950' N	112° 49.809' W
Repeater	CMD 5	37° 42.553' N	112° 36.819' W
Repeater	CMD 4	38° 1.190' N	112° 13.004' W
Repeater	CMD 2	37° 57.137' N	112° 53.057' W
Repeater	CMD 3	38° 0.467' N	112° 53.397' W
Sling Site		37° 45.790' N	112° 49.994' W
Sling Site		37° 46.129' N	112° 49.752' W

Legend					
⊙	Camp	Ⓜ	Repeater	—	Completed Line
•	Drop Point	⚠	Sling Site	⊘	Completed Dozer Line
Ⓜ	Helibase	⚠	Value at Risk	— · — · —	Completed Hand Line
•	Helispot	⌘	Division Break	— · — · —	Road as Completed Line
Ⓜ	Incident Command Post	⌘	Branch Break	(XXXX)	Ridge/Geographic Feature
Ⓜ	Mobile Weather Unit	—	Uncontrolled Fire Edge		

