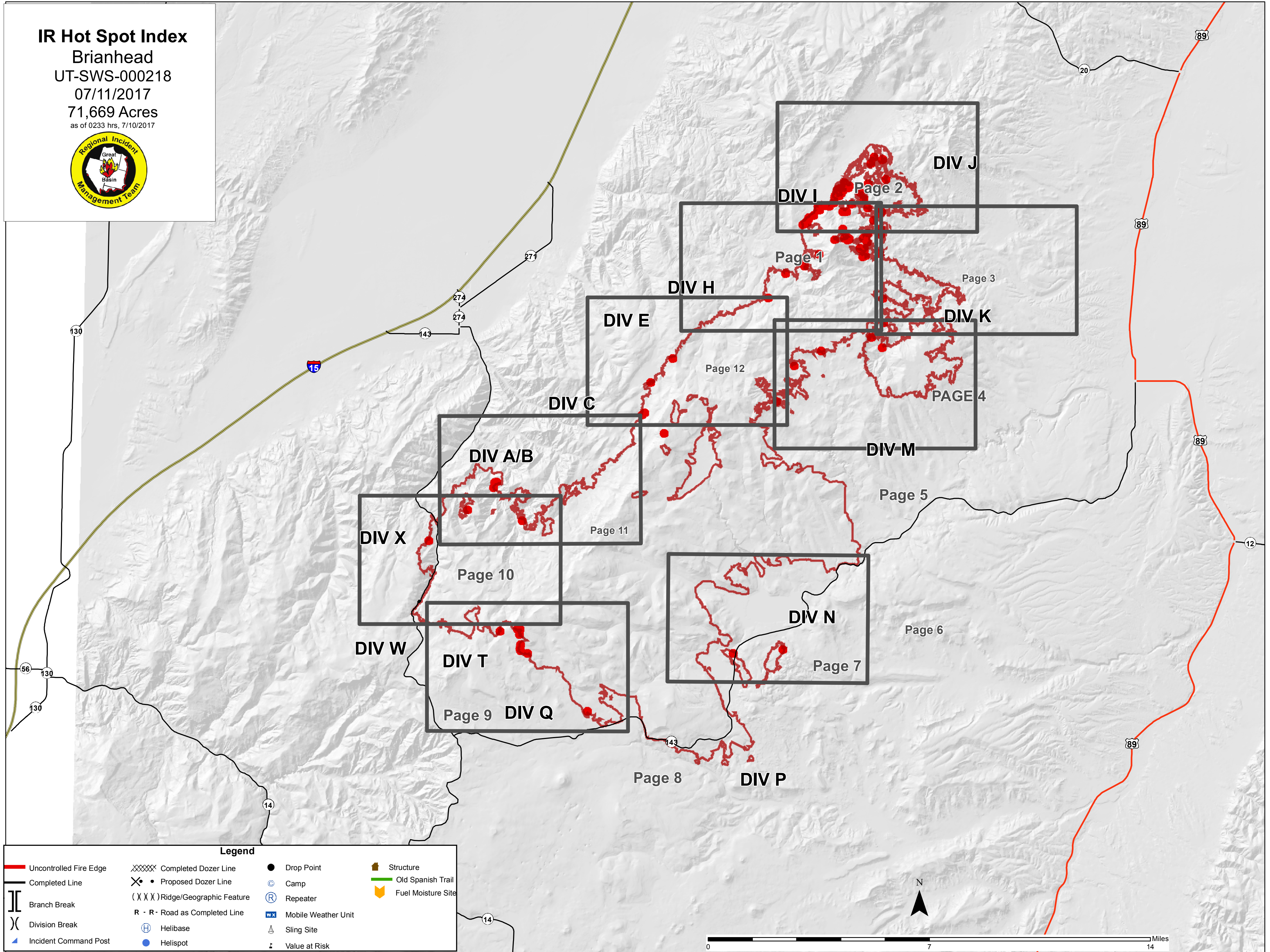


# IR Hot Spot Index

Brianhead  
UT-SWS-000218  
07/11/2017  
71,669 Acres  
as of 0233 hrs, 7/10/2017



### Legend

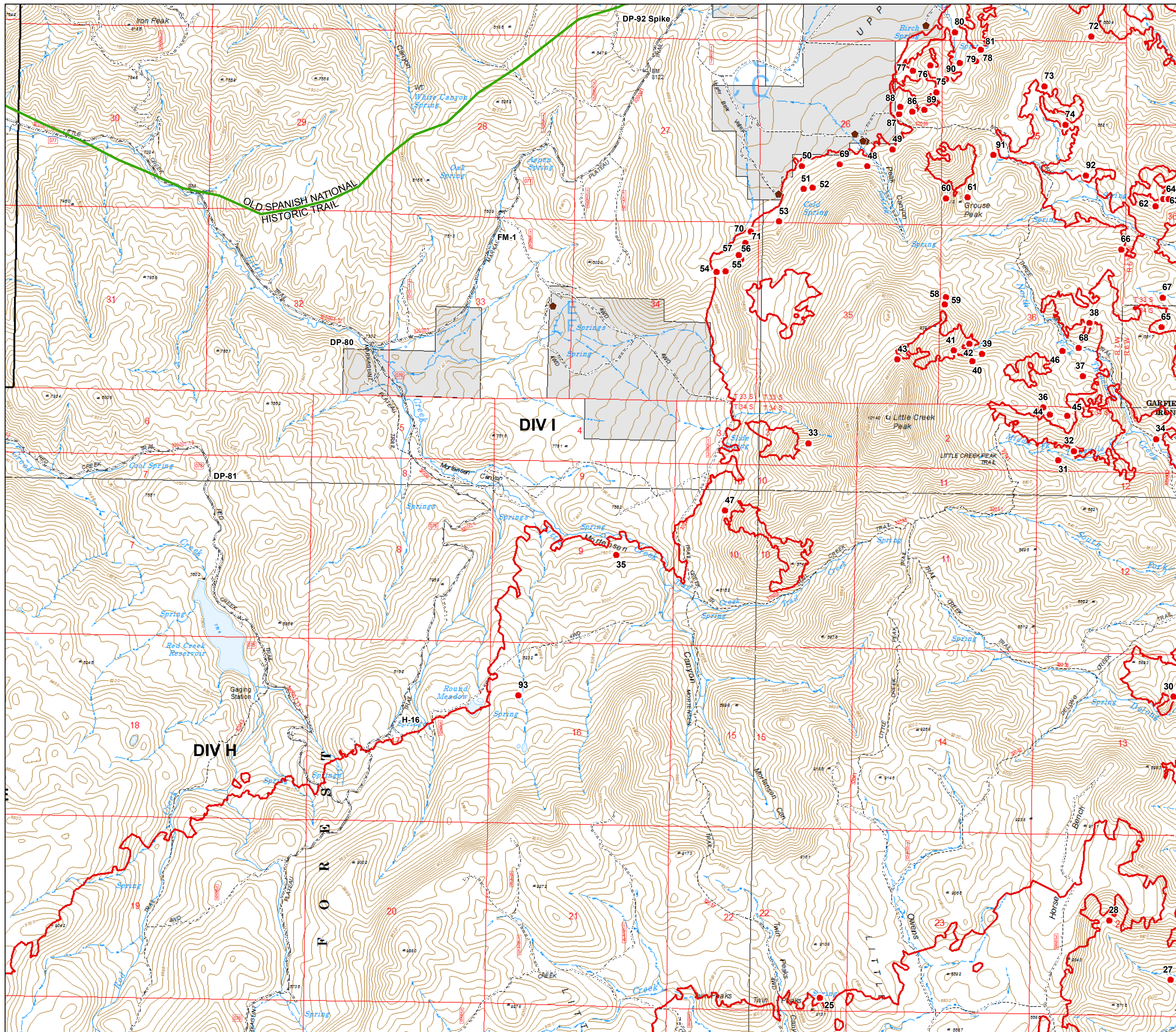
- |                        |                                |                     |                    |
|------------------------|--------------------------------|---------------------|--------------------|
| Uncontrolled Fire Edge | Completed Dozer Line           | Drop Point          | Structure          |
| Completed Line         | Proposed Dozer Line            | Camp                | Old Spanish Trail  |
| Branch Break           | Ridge/Geographic Feature       | Repeater            | Fuel Moisture Site |
| Division Break         | R - R - Road as Completed Line | Mobile Weather Unit |                    |
| Incident Command Post  | Helibase                       | Sling Site          |                    |
|                        | Helispot                       | Value at Risk       |                    |



0 7 14 Miles

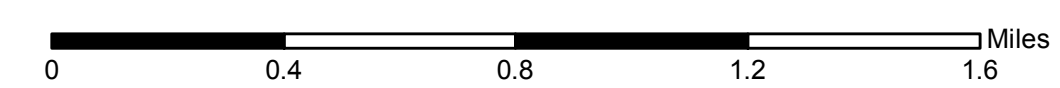
Id, X\_Coord, Y\_Coord

- 31, -112° 35.684', 37° 52.675'
- 32, -112° 35.590', 37° 52.719'
- 33, -112° 37.198', 37° 52.733'
- 34, -112° 35.096', 37° 52.783'
- 35, -112° 38.350', 37° 52.181'
- 36, -112° 35.781', 37° 52.924'
- 37, -112° 35.543', 37° 53.078'
- 38, -112° 35.510', 37° 53.335'
- 39, -112° 36.156', 37° 53.176'
- 40, -112° 36.215', 37° 53.142'
- 41, -112° 36.330', 37° 53.191'
- 42, -112° 36.235', 37° 53.225'
- 43, -112° 36.669', 37° 53.144'
- 44, -112° 35.740', 37° 52.890'
- 45, -112° 35.634', 37° 52.888'
- 46, -112° 35.671', 37° 53.198'
- 47, -112° 37.697', 37° 52.402'
- 48, -112° 36.870', 37° 54.068'
- 49, -112° 36.720', 37° 54.152'
- 50, -112° 37.267', 37° 54.064'
- 51, -112° 37.255', 37° 53.954'
- 52, -112° 37.199', 37° 53.960'
- 53, -112° 37.400', 37° 53.796'
- 54, -112° 37.774', 37° 53.549'
- 55, -112° 37.717', 37° 53.554'
- 56, -112° 37.625', 37° 53.613'
- 57, -112° 37.641', 37° 53.633'
- 58, -112° 36.380', 37° 53.448'
- 59, -112° 36.387', 37° 53.414'
- 60, -112° 36.390', 37° 53.920'
- 61, -112° 36.261', 37° 53.927'
- 62, -112° 35.122', 37° 53.899'
- 63, -112° 35.077', 37° 53.936'
- 64, -112° 35.042', 37° 53.934'
- 65, -112° 35.075', 37° 53.320'
- 66, -112° 35.326', 37° 53.690'
- 67, -112° 35.070', 37° 53.462'
- 68, -112° 35.571', 37° 53.212'
- 69, -112° 37.038', 37° 54.077'
- 70, -112° 37.570', 37° 53.745'
- 71, -112° 37.601', 37° 53.691'
- 91, -112° 36.108', 37° 54.134'
- 92, -112° 35.545', 37° 54.041'
- 93, -112° 38.927', 37° 51.499'



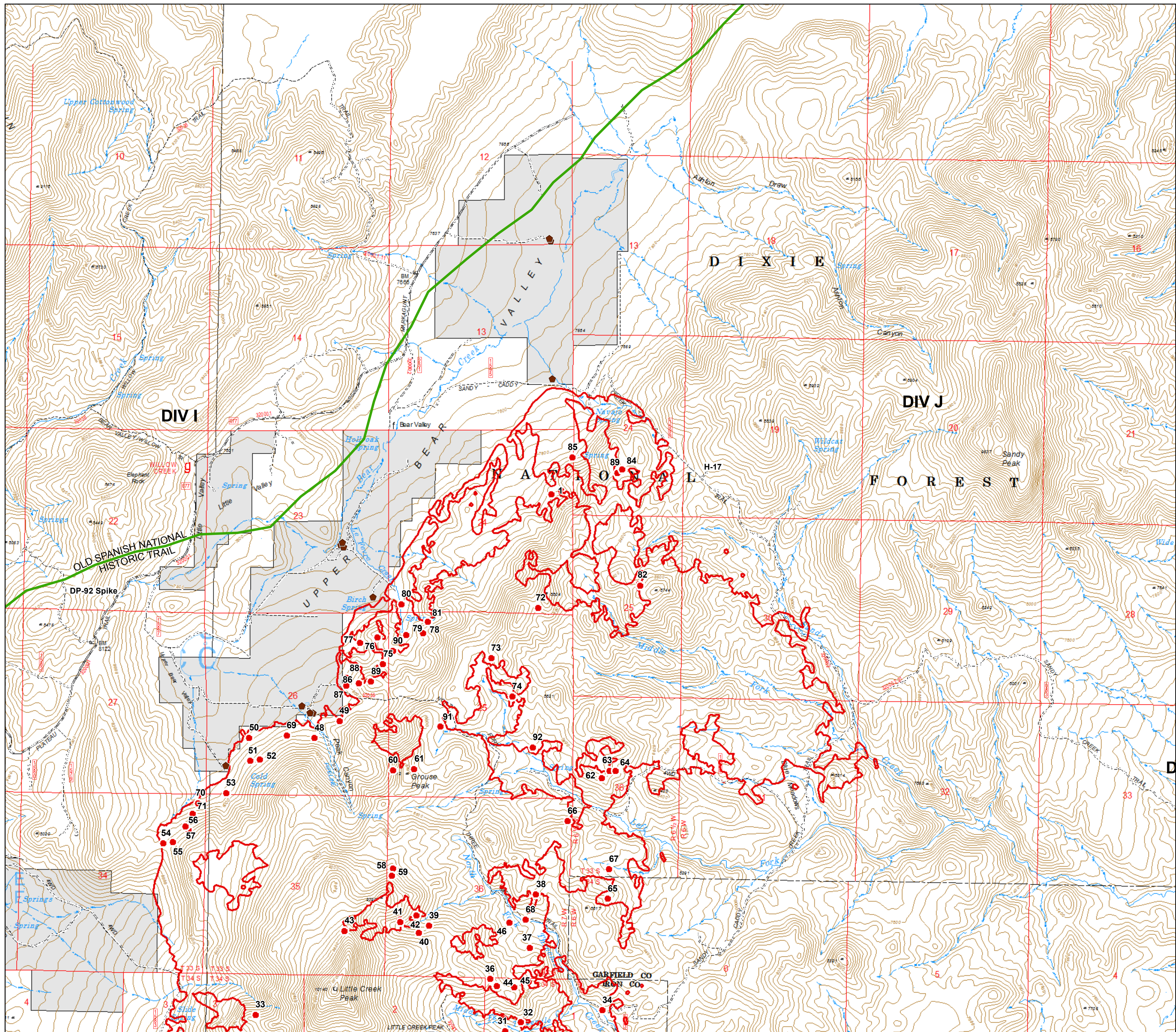
Divs H & I

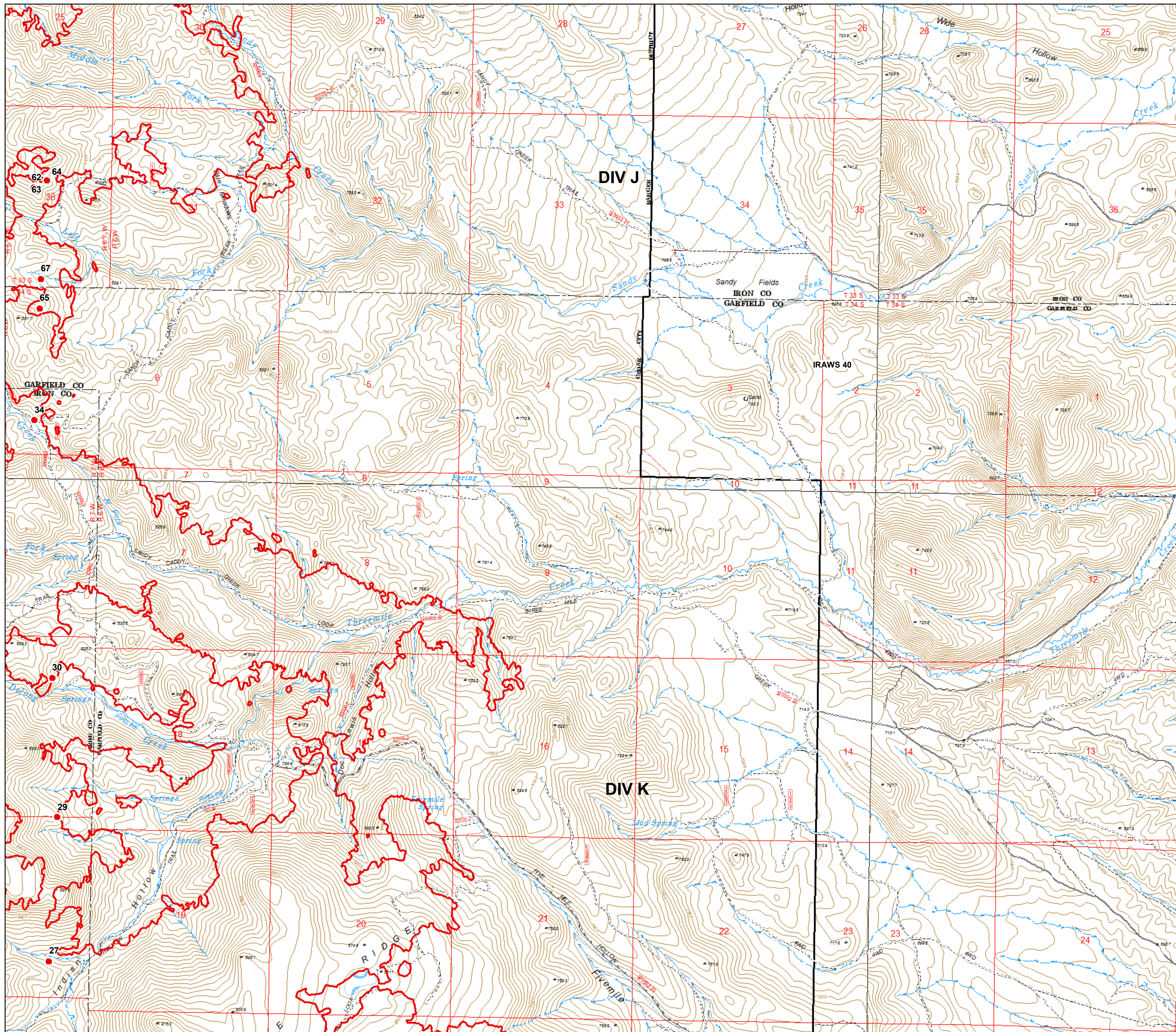
Page 1



**Id, X\_Coord, Y\_Coord**

- 1, -112° 35.459', 37° 55.259'
- 48, -112° 36.870', 37° 54.068'
- 49, -112° 36.720', 37° 54.152'
- 50, -112° 37.267', 37° 54.064'
- 51, -112° 37.255', 37° 53.954'
- 52, -112° 37.199', 37° 53.960'
- 53, -112° 37.400', 37° 53.796'
- 54, -112° 37.774', 37° 53.549'
- 55, -112° 37.717', 37° 53.554'
- 56, -112° 37.625', 37° 53.613'
- 57, -112° 37.641', 37° 53.633'
- 58, -112° 36.380', 37° 53.448'
- 59, -112° 36.387', 37° 53.414'
- 60, -112° 36.390', 37° 53.920'
- 61, -112° 36.261', 37° 53.927'
- 62, -112° 35.122', 37° 53.899'
- 63, -112° 35.077', 37° 53.936'
- 64, -112° 35.042', 37° 53.934'
- 66, -112° 35.326', 37° 53.690'
- 67, -112° 35.070', 37° 53.462'
- 69, -112° 37.038', 37° 54.077'
- 70, -112° 37.570', 37° 53.745'
- 71, -112° 37.601', 37° 53.691'
- 72, -112° 35.527', 37° 54.711'
- 73, -112° 35.806', 37° 54.467'
- 74, -112° 35.675', 37° 54.284'
- 75, -112° 36.462', 37° 54.430'
- 76, -112° 36.500', 37° 54.558'
- 77, -112° 36.604', 37° 54.531'
- 78, -112° 36.223', 37° 54.581'
- 79, -112° 36.323', 37° 54.571'
- 80, -112° 36.356', 37° 54.719'
- 81, -112° 36.195', 37° 54.637'
- 82, -112° 34.912', 37° 54.829'
- 84, -112° 35.032', 37° 55.385'
- 85, -112° 35.334', 37° 55.439'
- 86, -112° 36.605', 37° 54.336'
- 87, -112° 36.683', 37° 54.322'
- 88, -112° 36.679', 37° 54.358'
- 89, -112° 36.532', 37° 54.345'
- 89, -112° 35.059', 37° 55.368'
- 90, -112° 36.403', 37° 54.493'
- 91, -112° 36.108', 37° 54.134'
- 92, -112° 35.545', 37° 54.041'

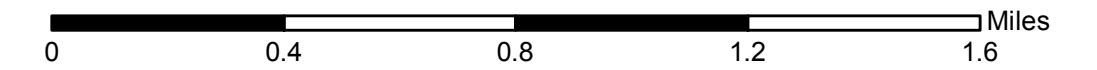


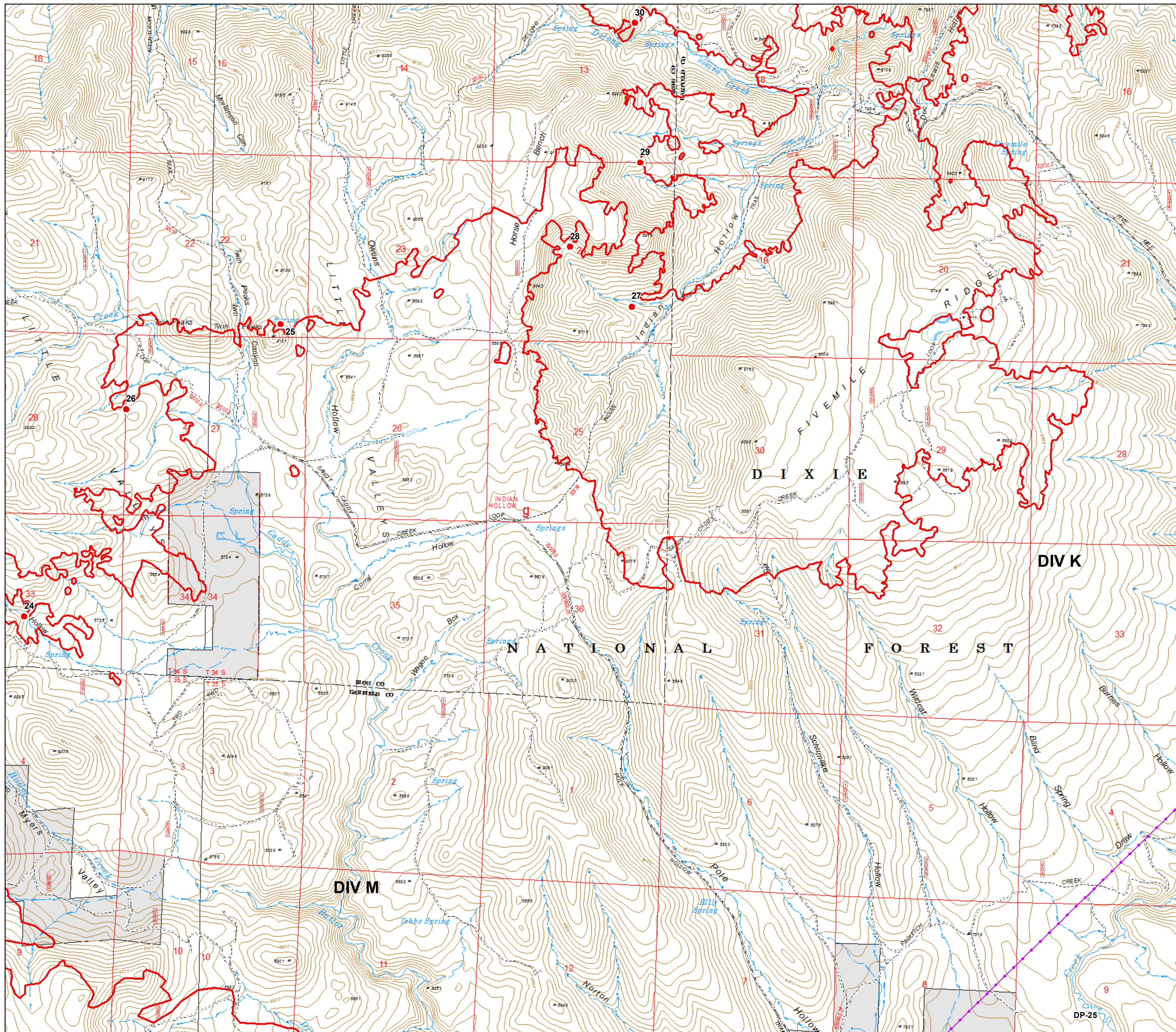


**Id, X\_Coord, Y\_Coord**

- 29, -112° 34.914', 37° 50.877'
- 30, -112° 34.961', 37° 51.547'
- 34, -112° 35.096', 37° 52.783'
- 62, -112° 35.122', 37° 53.899'
- 63, -112° 35.077', 37° 53.936'
- 64, -112° 35.042', 37° 53.934'
- 65, -112° 35.075', 37° 53.320'
- 67, -112° 35.070', 37° 53.462'

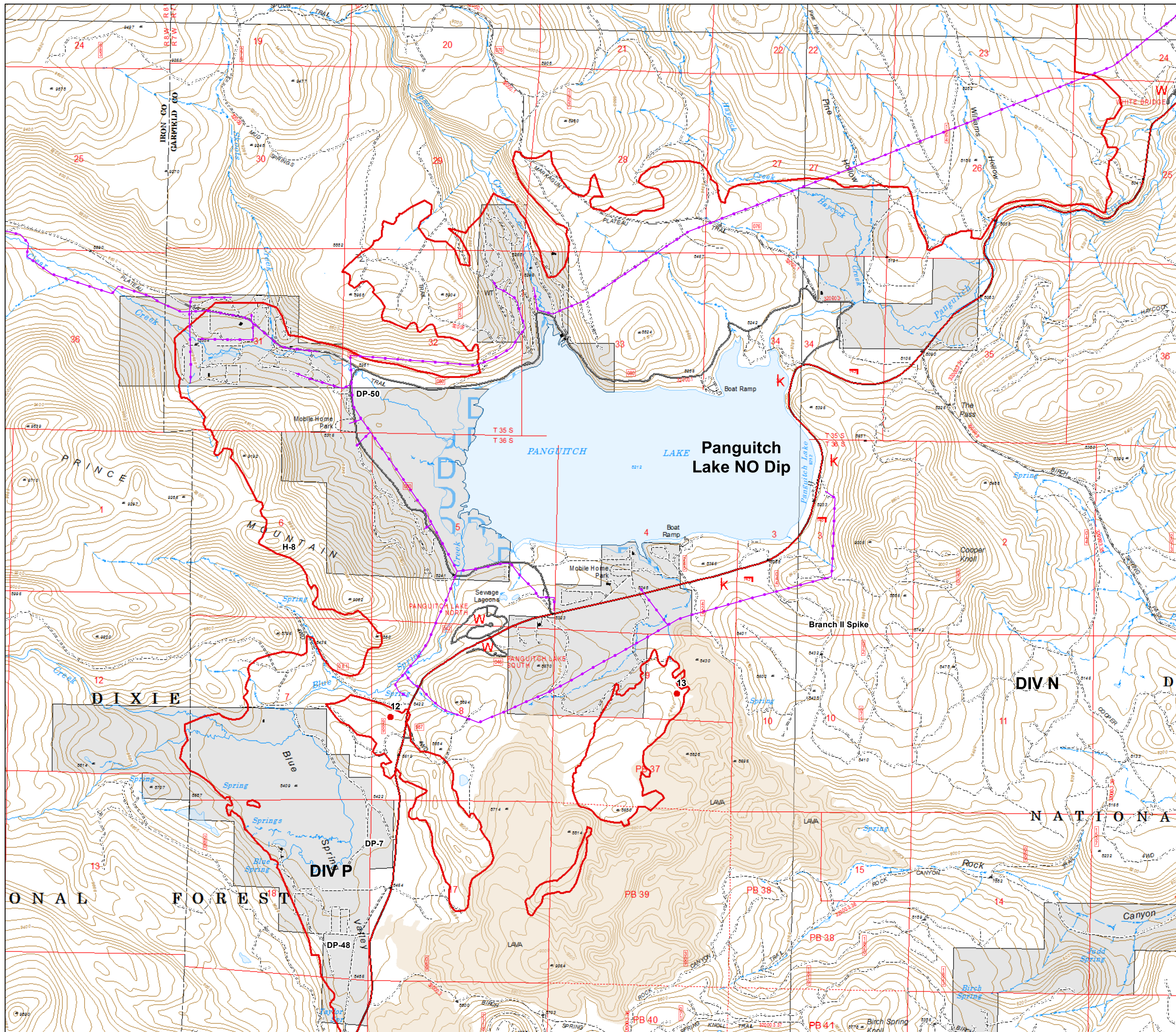
**Div K**





**Id, X\_Coord, Y\_Coord**

- 24, -112° 38.594', 37° 48.647'
- 25, -112° 37.073', 37° 50.072'
- 26, -112° 37.999', 37° 49.651'
- 27, -112° 34.951', 37° 50.186'
- 28, -112° 35.330', 37° 50.468'
- 29, -112° 34.914', 37° 50.877'

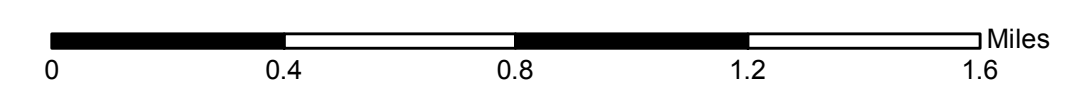


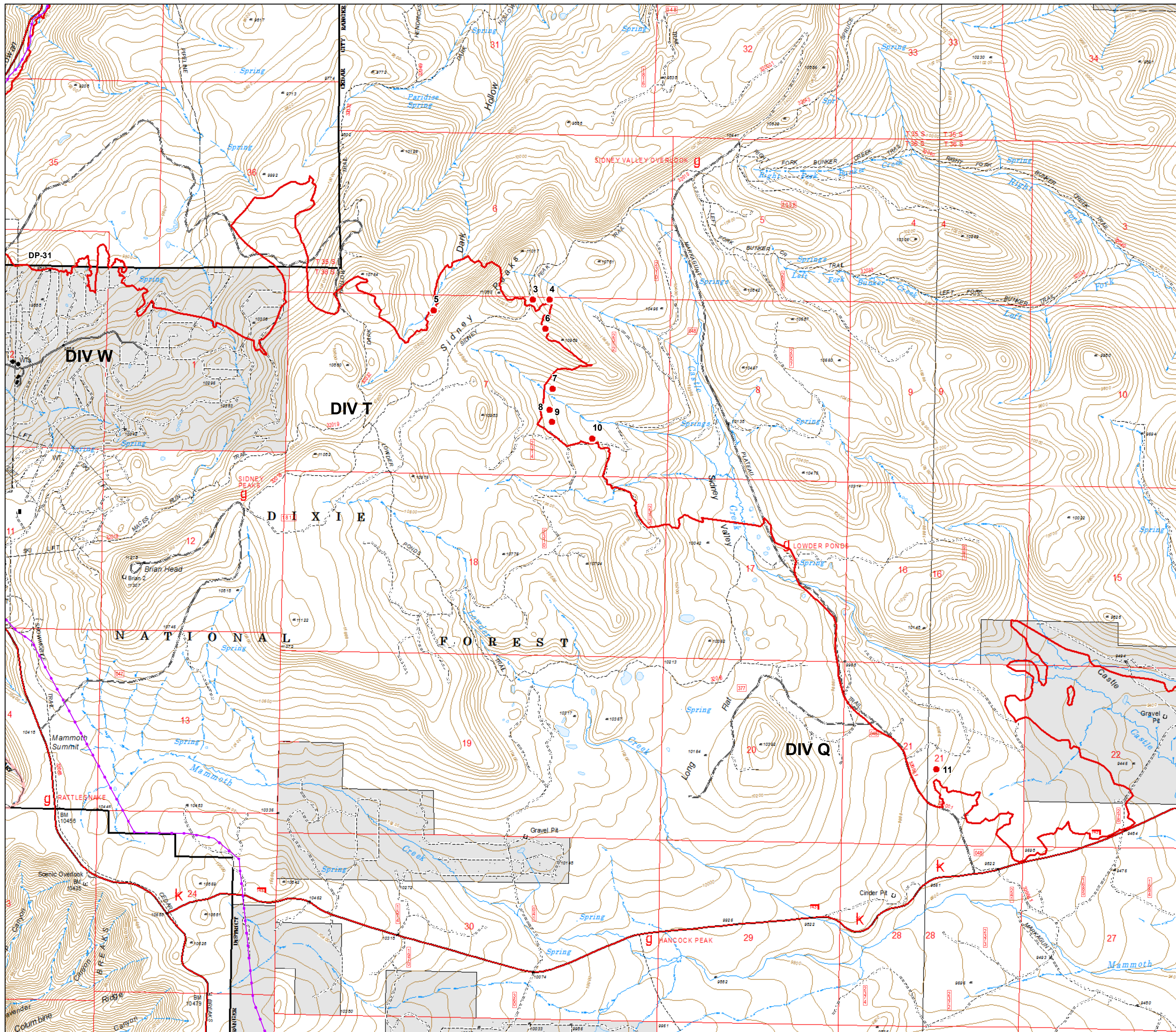
Id, X\_Coord, Y\_Coord

- 12, -112° 39.942', 37° 41.688'
- 13, -112° 38.216', 37° 41.824'

Div N

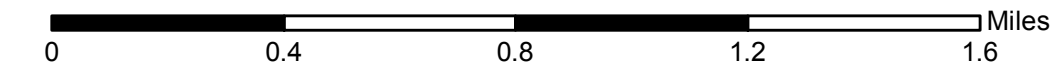
Page 7

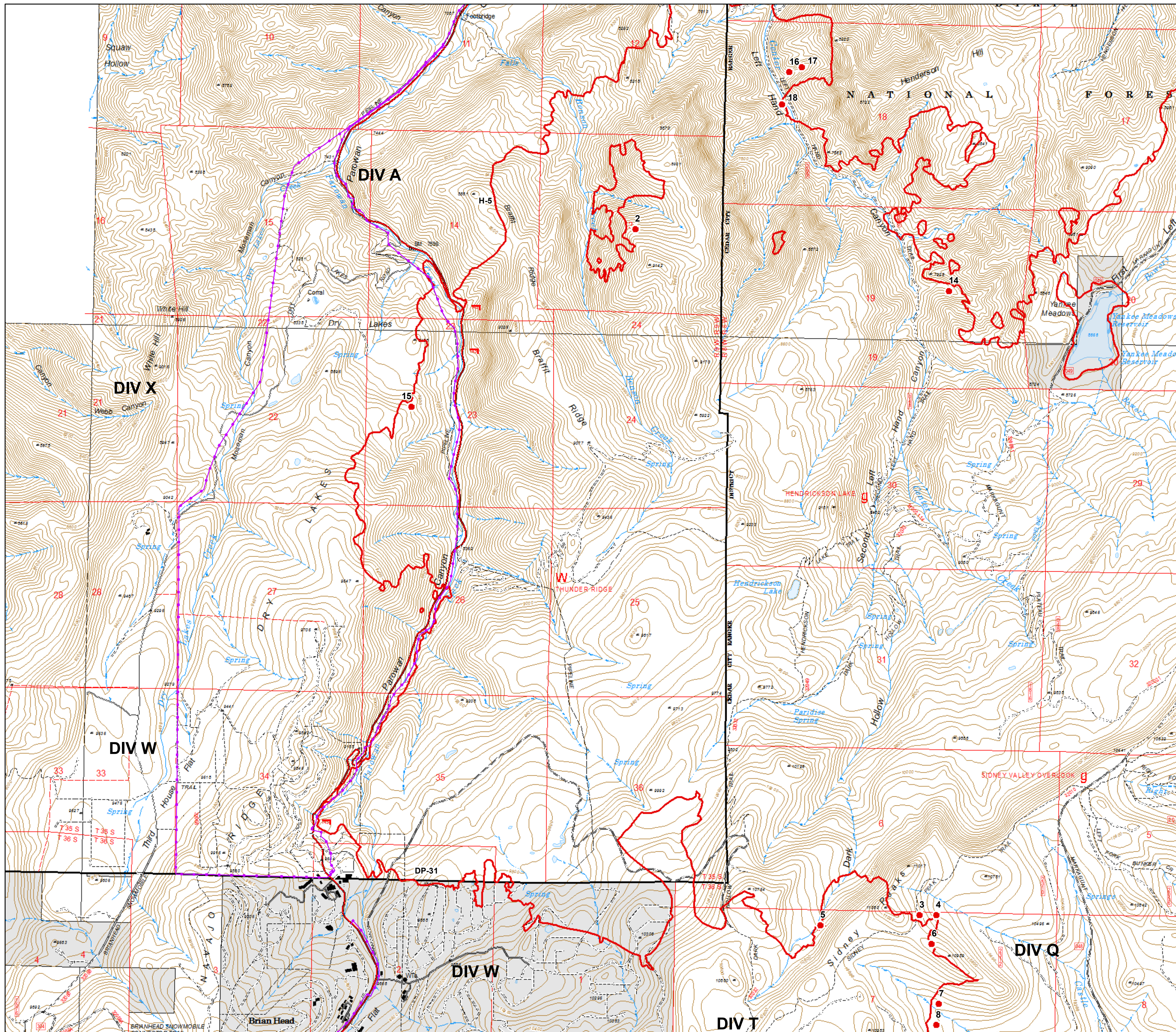




**Id, X\_Coord, Y\_Coord**

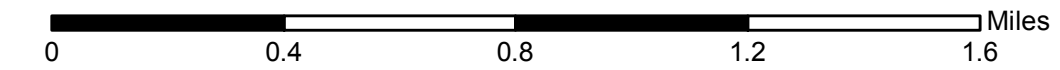
- 3, -112° 47.434', 37° 42.245'
- 4, -112° 47.334', 37° 42.247'
- 5, -112° 48.032', 37° 42.187'
- 6, -112° 47.357', 37° 42.107'
- 7, -112° 47.306', 37° 41.820'
- 8, -112° 47.321', 37° 41.717'
- 9, -112° 47.303', 37° 41.659'
- 10, -112° 47.059', 37° 41.585'
- 11, -112° 44.945', 37° 40.027'



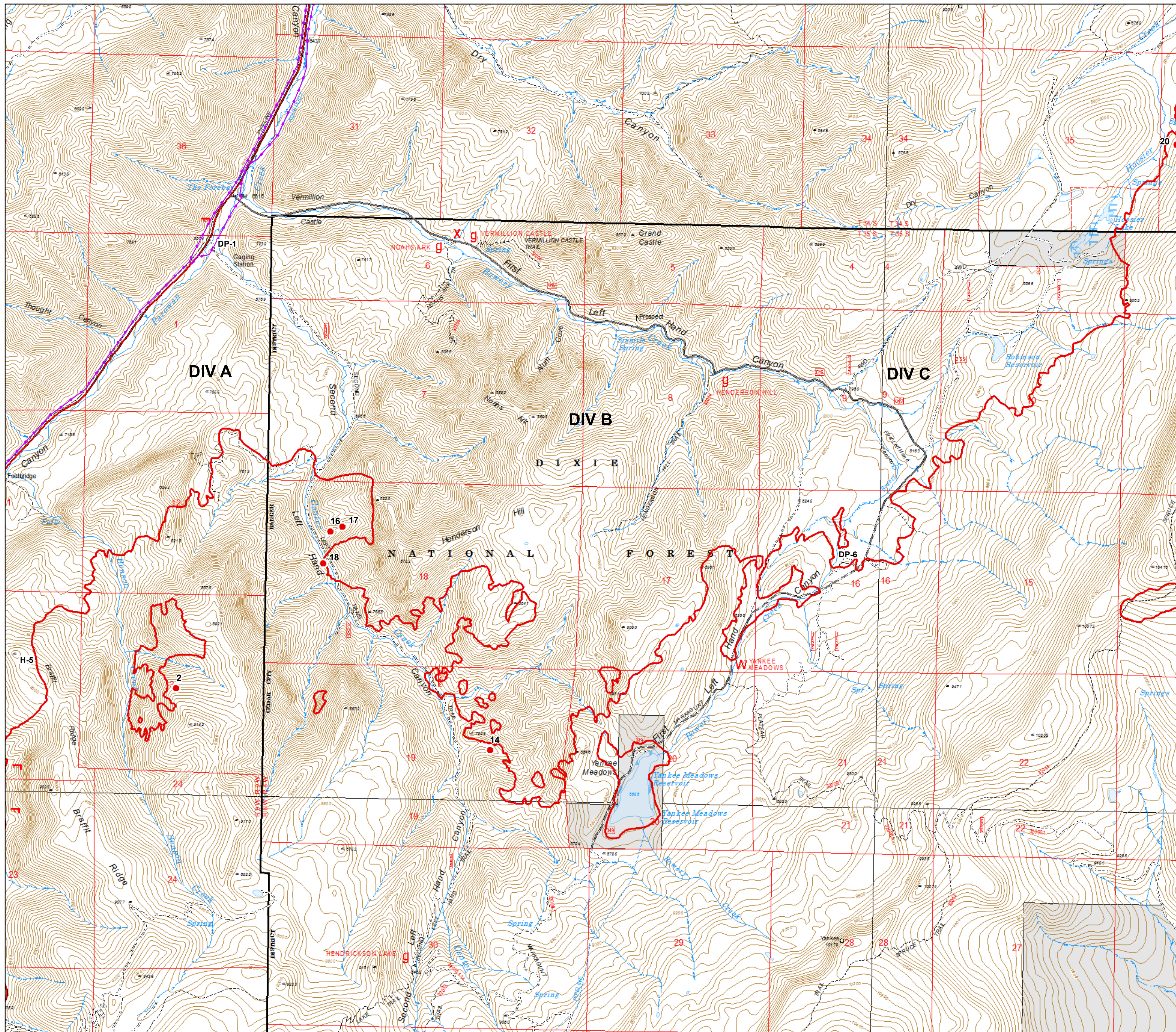


Id, X\_Coord, Y\_Coord

- 2, -112° 49.232', 37° 45.512'
- 14, -112° 47.329', 37° 45.244'
- 15, -112° 50.562', 37° 44.638'

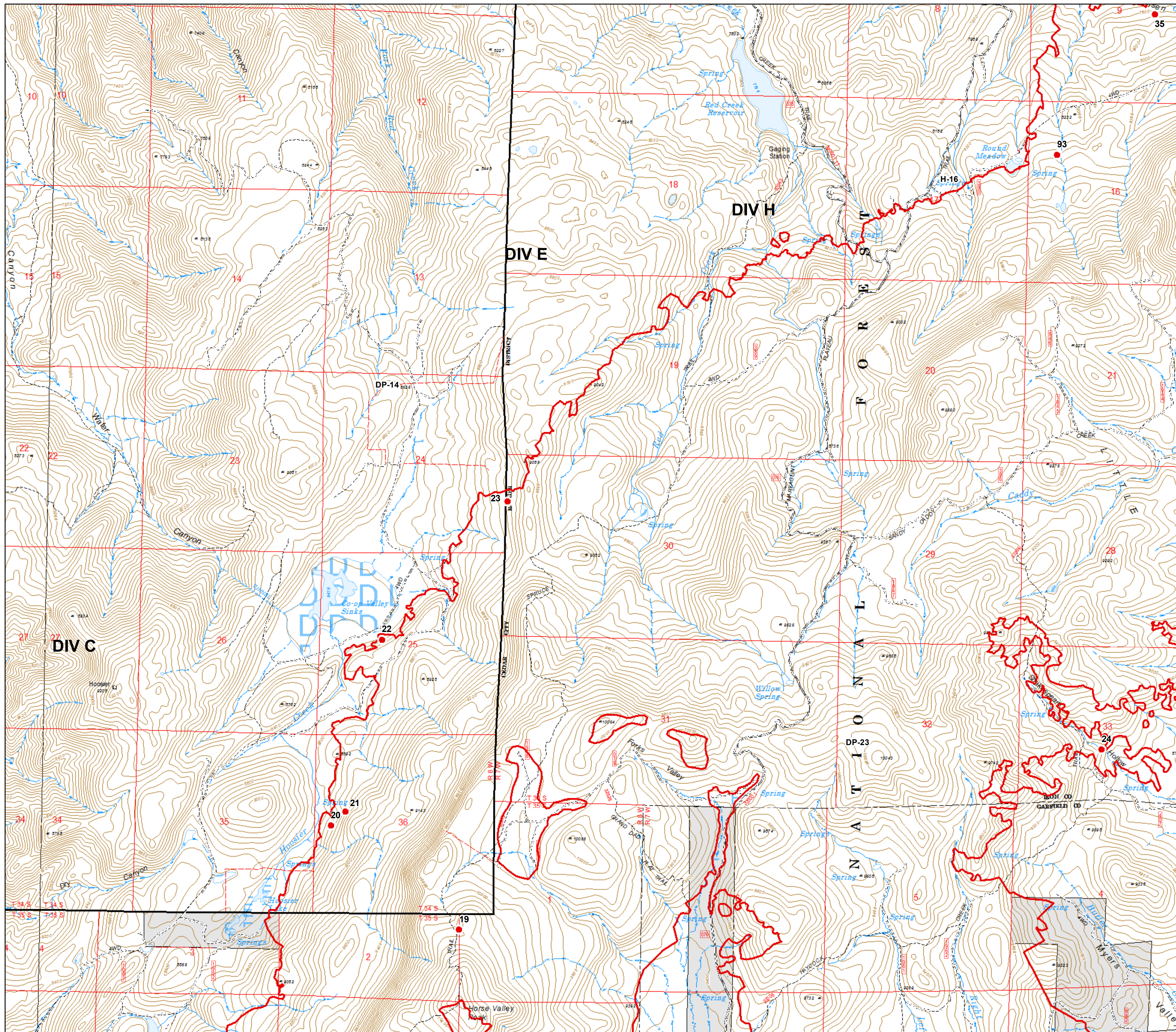






**Id, X\_Coord, Y\_Coord**

- 2, -112° 49.232', 37° 45.512'
- 14, -112° 47.329', 37° 45.244'
- 16, -112° 48.318', 37° 46.279'
- 17, -112° 48.245', 37° 46.304'
- 18, -112° 48.360', 37° 46.124'



**Id, X\_Coord, Y\_Coord**

- 20, -112° 43.247', 37° 48.214'
- 21, -112° 43.163', 37° 48.284'
- 22, -112° 42.960', 37° 49.113'
- 23, -112° 42.216', 37° 49.787'
- 24, -112° 38.594', 37° 48.647'
- 93, -112° 38.927', 37° 51.499'

