

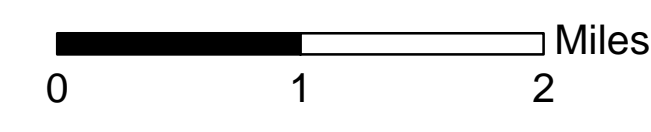
Rehab

Brianhead
UT-SWS-000218
07/11/2017
71,669 acres
as of 0233 hrs, 7/10/2017

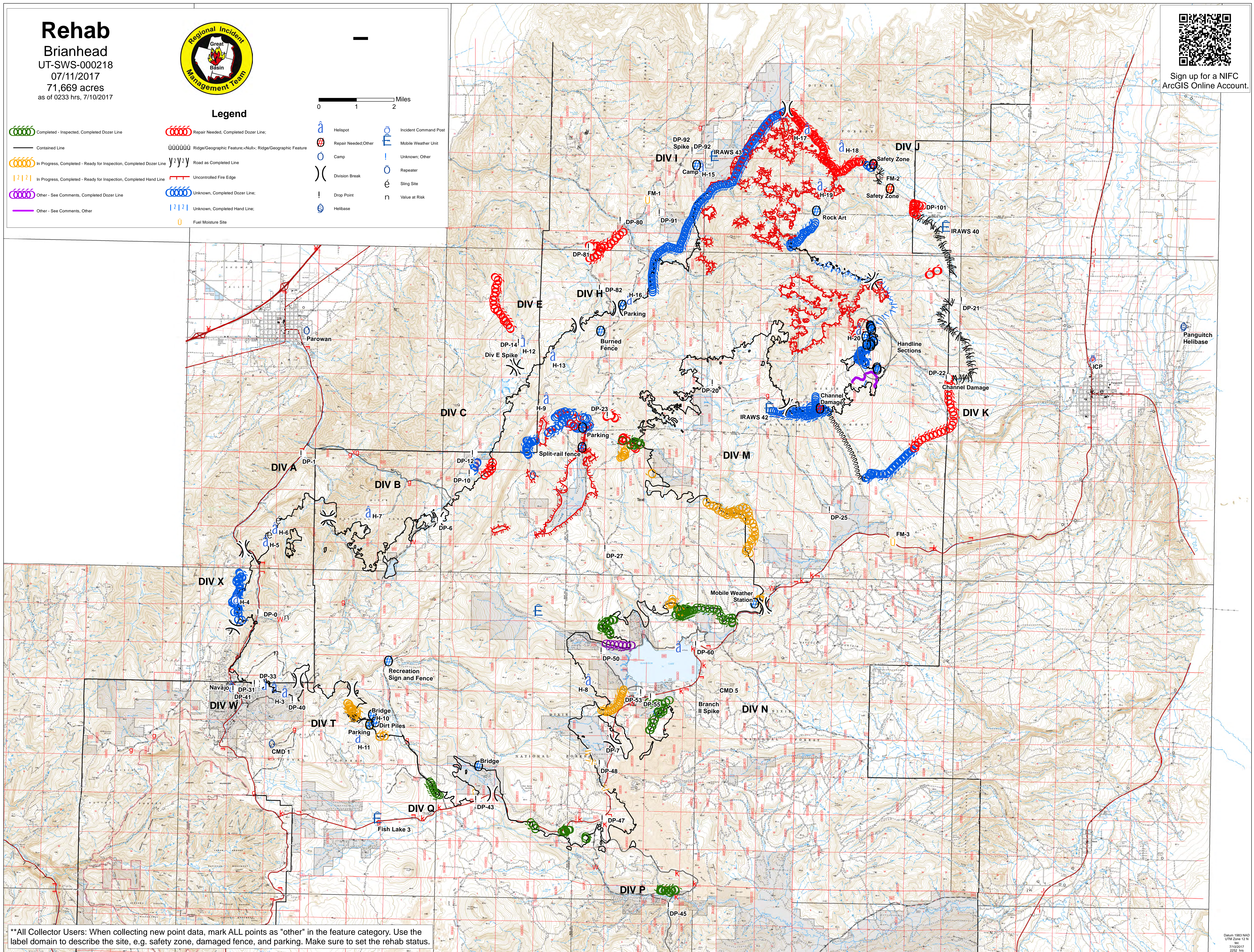


Legend

- | | | | |
|---|--|----------------------|-----------------------|
| Completed - Inspected, Completed Dozer Line | Repair Needed, Completed Dozer Line: | Helispot | Incident Command Post |
| Contained Line | Ridge/Geographic Feature: <Null>; Ridge/Geographic Feature | Repair Needed, Other | Mobile Weather Unit |
| In Progress, Completed - Ready for Inspection, Completed Dozer Line | Road as Completed Line | Camp | Unknown; Other |
| In Progress, Completed - Ready for Inspection, Completed Hand Line | Uncontrolled Fire Edge | Division Break | Repeater |
| Other - See Comments, Completed Dozer Line | Unknown, Completed Dozer Line: | Drop Point | Sling Site |
| Other - See Comments, Other | Unknown, Completed Hand Line: | Helibase | Value at Risk |
| | Fuel Moisture Site | | |



Sign up for a NIFC
ArcGIS Online Account.



**All Collector Users: When collecting new point data, mark ALL points as "other" in the feature category. Use the label domain to describe the site, e.g. safety zone, damaged fence, and parking. Make sure to set the rehab status.