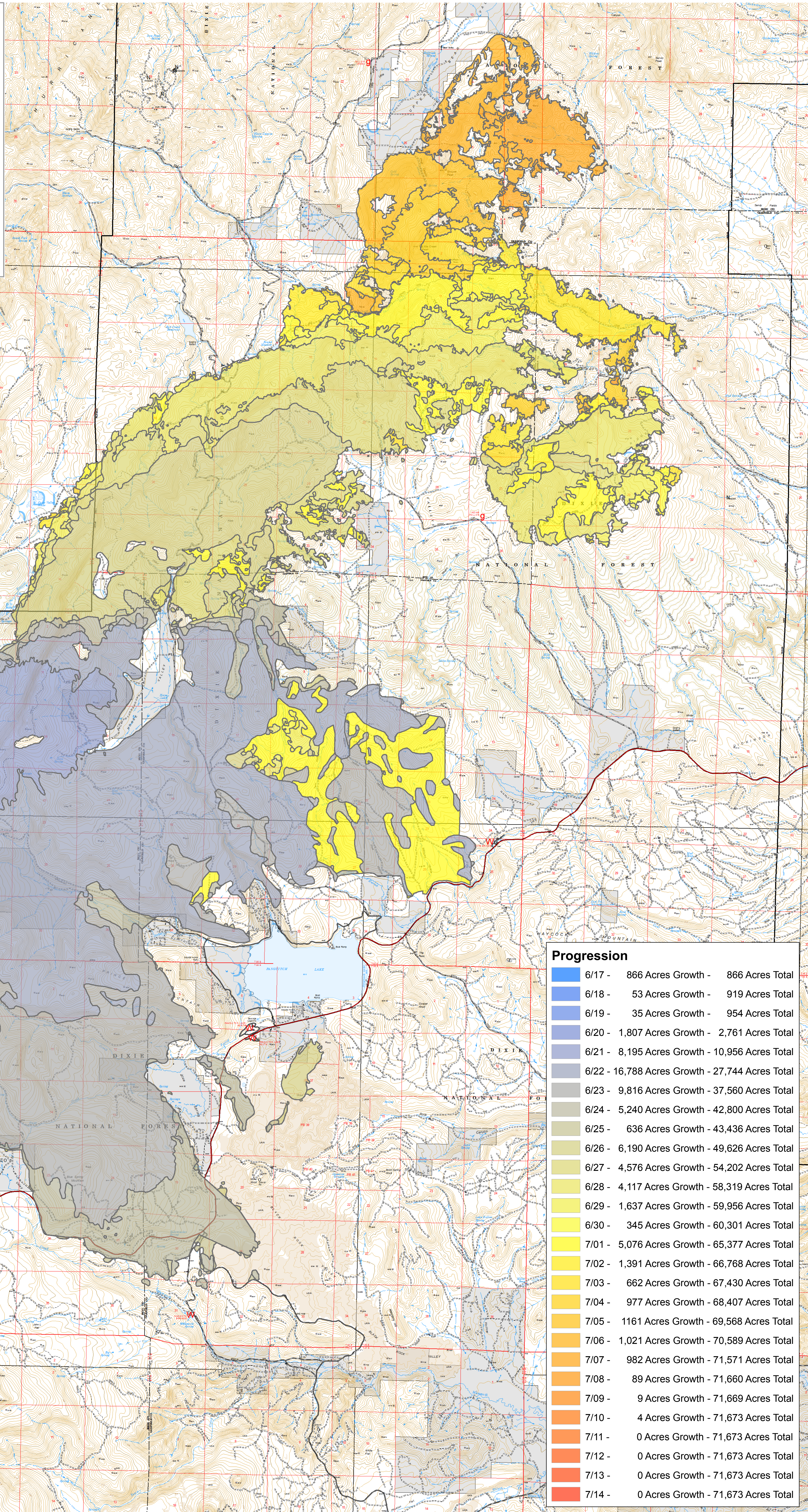
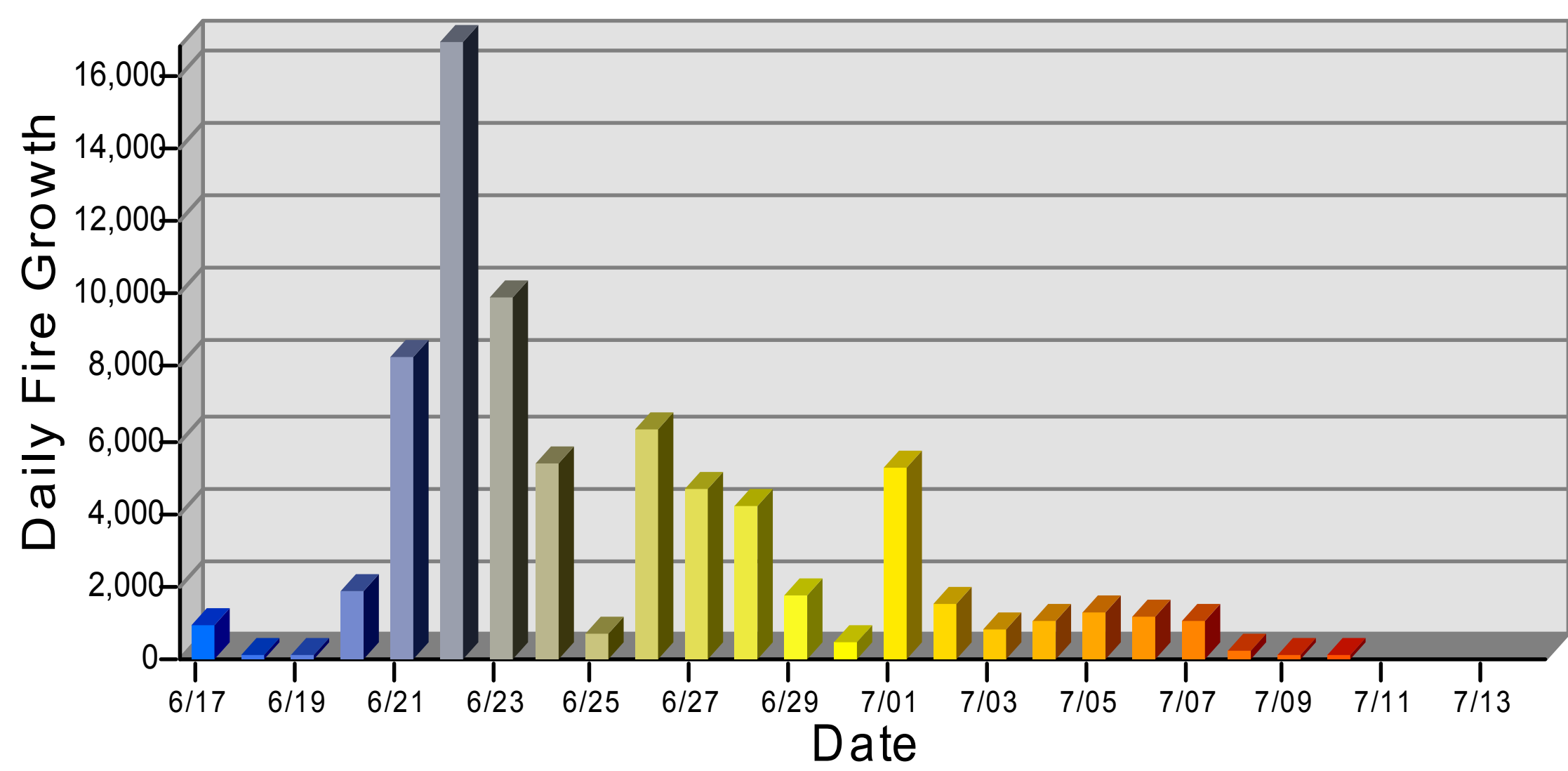


Graph of Daily Fire Growth



Progression

6/17 - 866 Acres Growth - 866 Acres Total
6/18 - 53 Acres Growth - 919 Acres Total
6/19 - 35 Acres Growth - 954 Acres Total
6/20 - 1,807 Acres Growth - 2,761 Acres Total
6/21 - 8,195 Acres Growth - 10,956 Acres Total
6/22 - 16,788 Acres Growth - 27,744 Acres Total
6/23 - 9,816 Acres Growth - 37,560 Acres Total
6/24 - 5,240 Acres Growth - 42,800 Acres Total
6/25 - 636 Acres Growth - 43,436 Acres Total
6/26 - 6,190 Acres Growth - 49,626 Acres Total
6/27 - 4,576 Acres Growth - 54,202 Acres Total
6/28 - 4,117 Acres Growth - 58,319 Acres Total
6/29 - 1,637 Acres Growth - 59,956 Acres Total
6/30 - 345 Acres Growth - 60,301 Acres Total
7/01 - 5,076 Acres Growth - 65,377 Acres Total
7/02 - 1,391 Acres Growth - 66,768 Acres Total
7/03 - 662 Acres Growth - 67,430 Acres Total
7/04 - 977 Acres Growth - 68,407 Acres Total
7/05 - 1,161 Acres Growth - 69,568 Acres Total
7/06 - 1,021 Acres Growth - 70,589 Acres Total
7/07 - 982 Acres Growth - 71,571 Acres Total
7/08 - 89 Acres Growth - 71,660 Acres Total
7/09 - 9 Acres Growth - 71,669 Acres Total
7/10 - 4 Acres Growth - 71,673 Acres Total
7/11 - 0 Acres Growth - 71,673 Acres Total
7/12 - 0 Acres Growth - 71,673 Acres Total
7/13 - 0 Acres Growth - 71,673 Acres Total
7/14 - 0 Acres Growth - 71,673 Acres Total

Progression
Brianhead
 UT-SWS-000218
 7/16/2017
 71,673 Acres
 as of 0158 hrs, 7/15/2017

