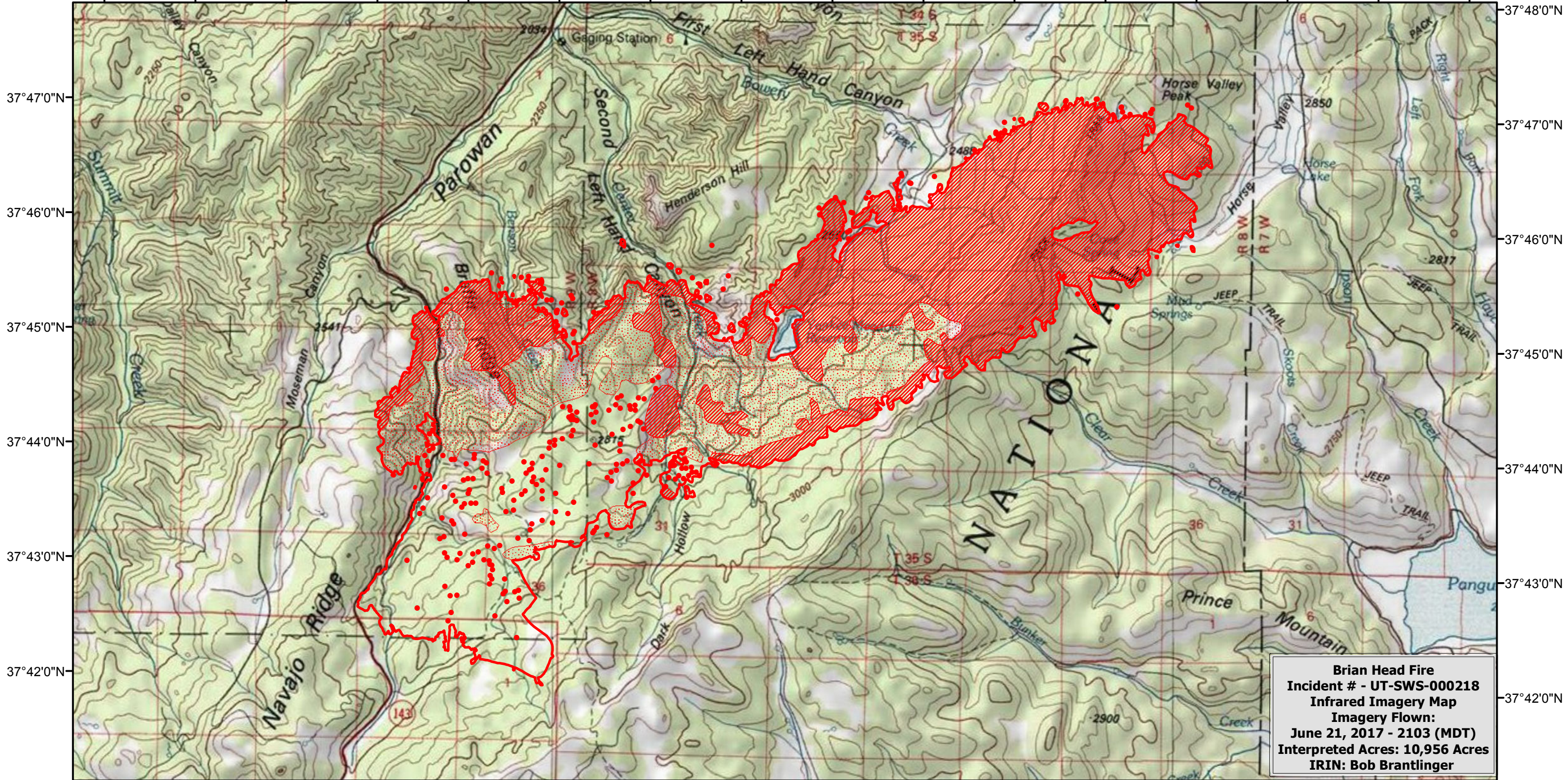


112°54'0"W 112°53'0"W 112°52'0"W 112°51'0"W 112°50'0"W 112°49'0"W 112°48'0"W 112°47'0"W 112°46'0"W 112°45'0"W 112°44'0"W 112°43'0"W 112°42'0"W 112°41'0"W 112°40'0"W 112°39'0"W







37°48'0"N
37°47'0"N
37°46'0"N
37°45'0"N
37°44'0"N
37°43'0"N
37°42'0"N

Brian Head Fire
Incident # - UT-SWS-000218
Infrared Imagery Map
Imagery Flown:
June 21, 2017 - 2103 (MDT)
Interpreted Acres: 10,956 Acres
IRIN: Bob Brantlinger

112°54'0"W 112°53'0"W 112°52'0"W 112°51'0"W 112°50'0"W 112°49'0"W 112°48'0"W 112°47'0"W 112°46'0"W 112°45'0"W 112°44'0"W 112°43'0"W 112°42'0"W 112°41'0"W 112°40'0"W 112°39'0"W

Legend

	Heat Perimeter		Isolated Heat Source
	Intense Heat		Scattered Heat Source

