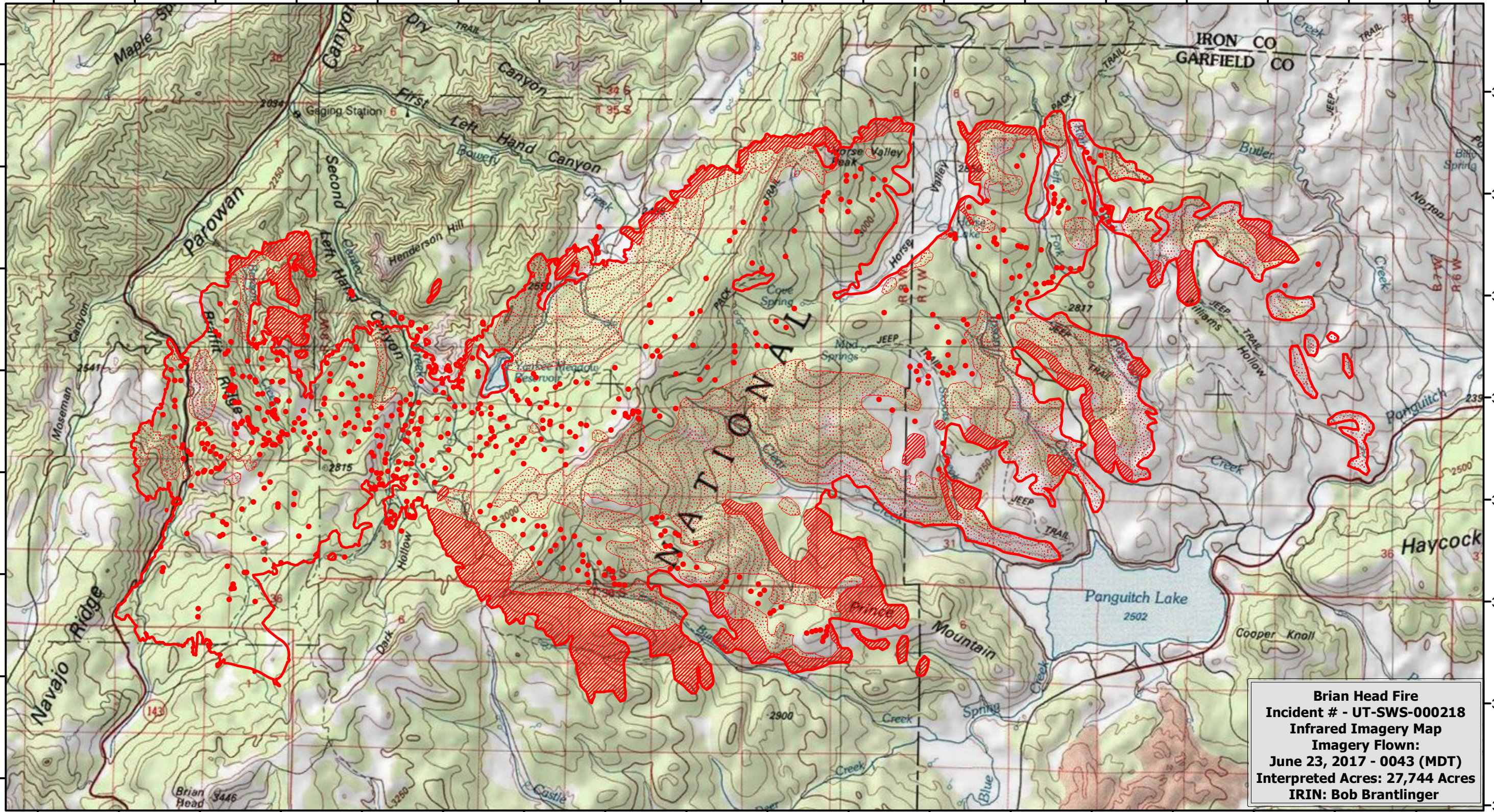


112°52'0"W 112°51'0"W 112°50'0"W 112°49'0"W 112°48'0"W 112°47'0"W 112°46'0"W 112°45'0"W 112°44'0"W 112°43'0"W 112°42'0"W 112°41'0"W 112°40'0"W 112°39'0"W 112°38'0"W 112°37'0"W 112°36'0"W 112°35'0"W





37°48'0"N
37°47'0"N
37°46'0"N
37°45'0"N
37°44'0"N
37°43'0"N
37°42'0"N
37°41'0"N

37°48'0"N
37°47'0"N
37°46'0"N
37°45'0"N
37°44'0"N
37°43'0"N
37°42'0"N
37°41'0"N



Brian Head Fire
Incident # - UT-SWS-000218
Infrared Imagery Map
Imagery Flown:
June 23, 2017 - 0043 (MDT)
Interpreted Acres: 27,744 Acres
IRIN: Bob Brantlinger

Legend

	Heat Perimeter		Isolated Heat Source
	Intense Heat		Scattered Heat Source

