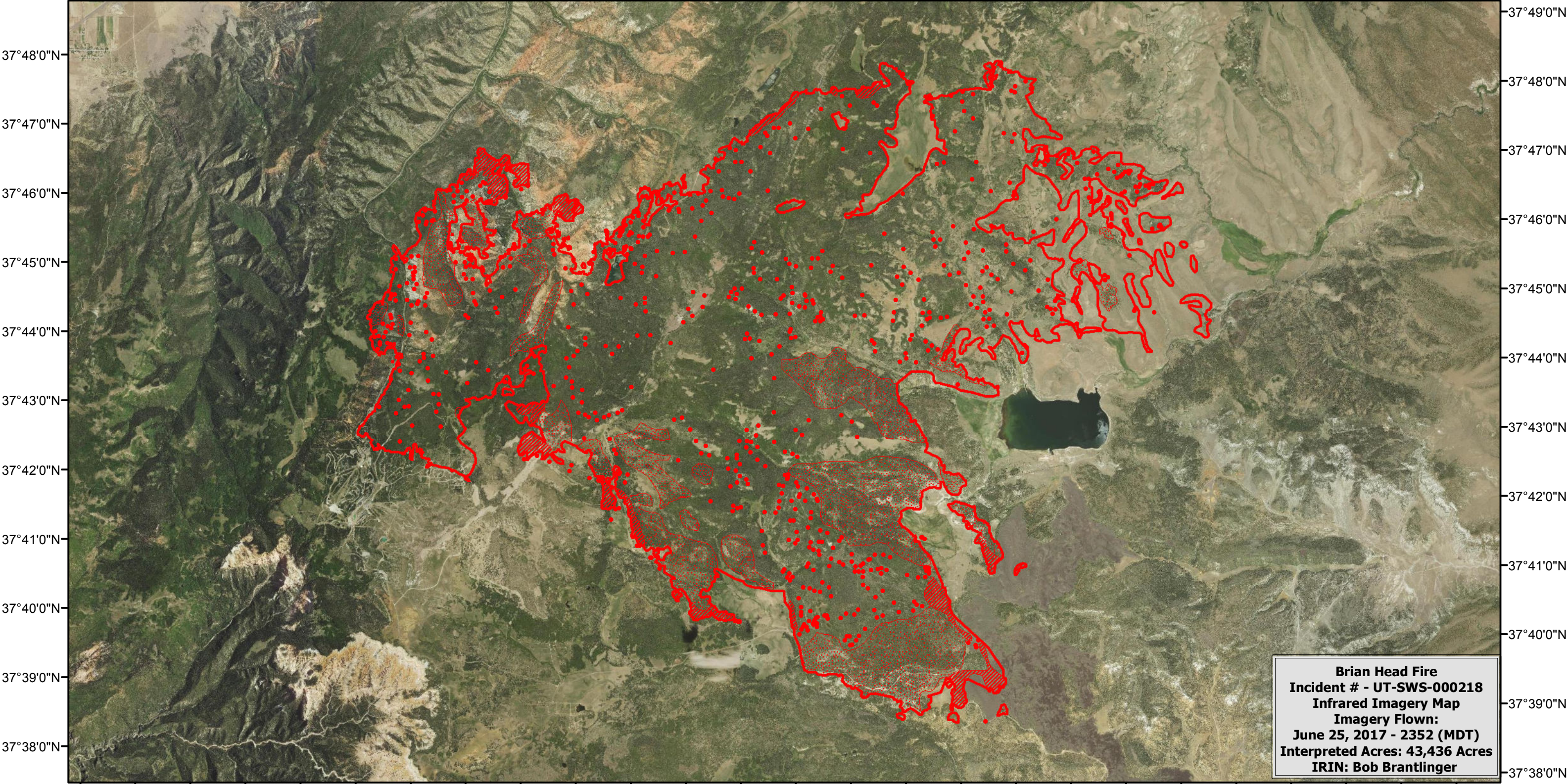


112°55'0"W 112°53'0"W 112°51'0"W 112°49'0"W 112°47'0"W 112°45'0"W 112°43'0"W 112°41'0"W 112°39'0"W 112°37'0"W 112°35'0"W 112°33'0"W 112°31'0"W




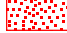


37°48'0"N
37°47'0"N
37°46'0"N
37°45'0"N
37°44'0"N
37°43'0"N
37°42'0"N
37°41'0"N
37°40'0"N
37°39'0"N
37°38'0"N

37°49'0"N
37°48'0"N
37°47'0"N
37°46'0"N
37°45'0"N
37°44'0"N
37°43'0"N
37°42'0"N
37°41'0"N
37°40'0"N
37°39'0"N
37°38'0"N

Brian Head Fire
Incident # - UT-SWS-000218
Infrared Imagery Map
Imagery Flown:
June 25, 2017 - 2352 (MDT)
Interpreted Acres: 43,436 Acres
IRIN: Bob Brantlinger

Legend

	Heat Perimeter		Isolated Heat Source
	Intense Heat		Scattered Heat Source

↑
N

Miles

0 1.25 2.5 5 7.5 10

