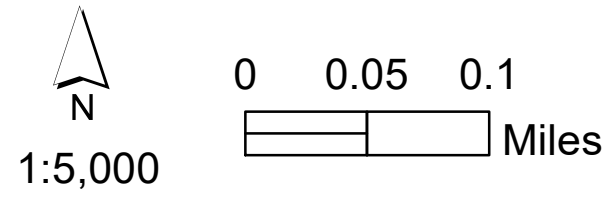


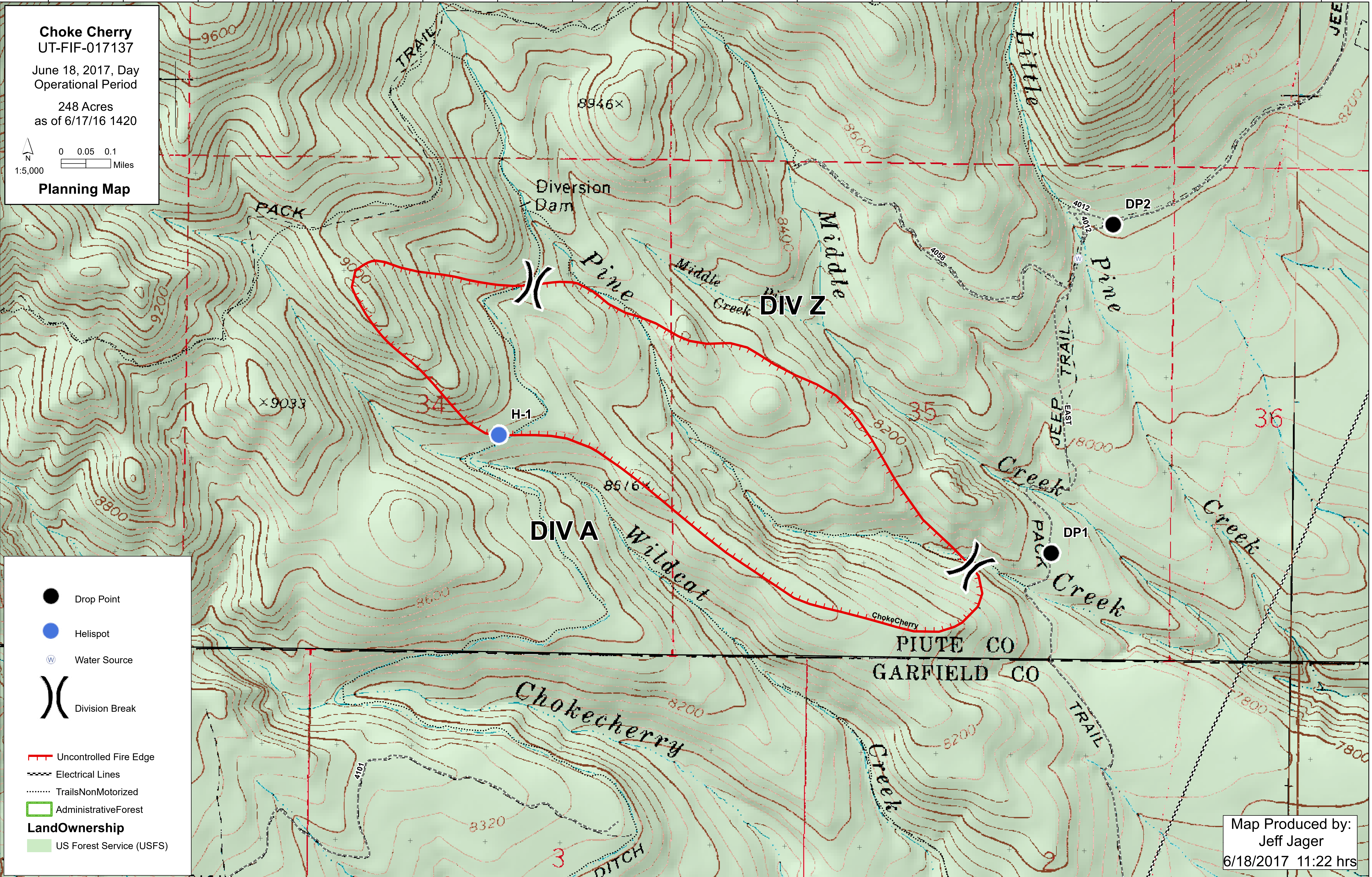
**Choke Cherry**  
UT-FIF-017137

June 18, 2017, Day  
Operational Period

248 Acres  
as of 6/17/16 1420



**Planning Map**



- Drop Point
- Helispot
- Ⓜ Water Source
- ) Division Break

- Uncontrolled Fire Edge
- Electrical Lines
- ⋯ TrailsNonMotorized
- AdministrativeForest

- LandOwnership**
- US Forest Service (USFS)

Map Produced by:  
Jeff Jager  
6/18/2017 11:22 hrs