

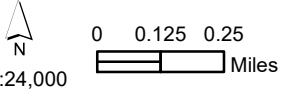
112°25'30"W 112°25'0"W 112°24'30"W 112°24'0"W 112°23'30"W 112°23'0"W 112°22'30"W

38°11'0"N  
38°10'30"N  
38°10'0"N  
38°9'30"N  
38°9'0"N  
38°8'30"N  
38°8'0"N

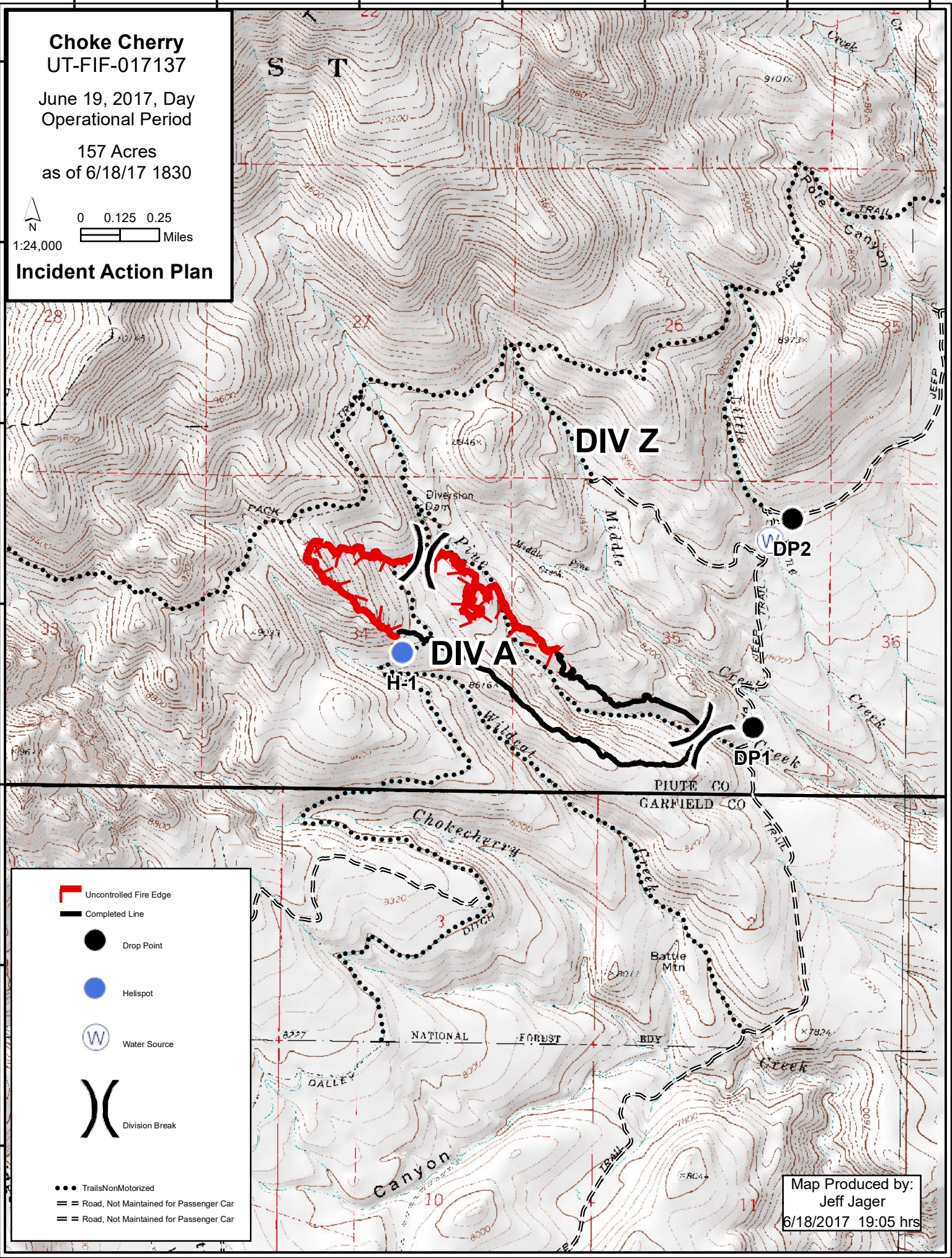
# Choke Cherry UT-FIF-017137

June 19, 2017, Day  
Operational Period

157 Acres  
as of 6/18/17 1830



## Incident Action Plan



- Uncontrolled Fire Edge
- Completed Line
- Drop Point
- Helispot
- Water Source
- Division Break
- Trails Non Motorized
- Road, Not Maintained for Passenger Car
- Road, Not Maintained for Passenger Car

Map Produced by:  
Jeff Jager  
6/18/2017 19:05 hrs