

112°25'30"W

112°24'0"W

112°22'30"W

Briefing Map
Choke Cherry
UT-FIF-017137
06/20/2017

228 Acres
 as of 6/19/17 1728

Miles
 0 0.1 0.2

Legend

EventPoint
 Representation: EventPoint_Rep

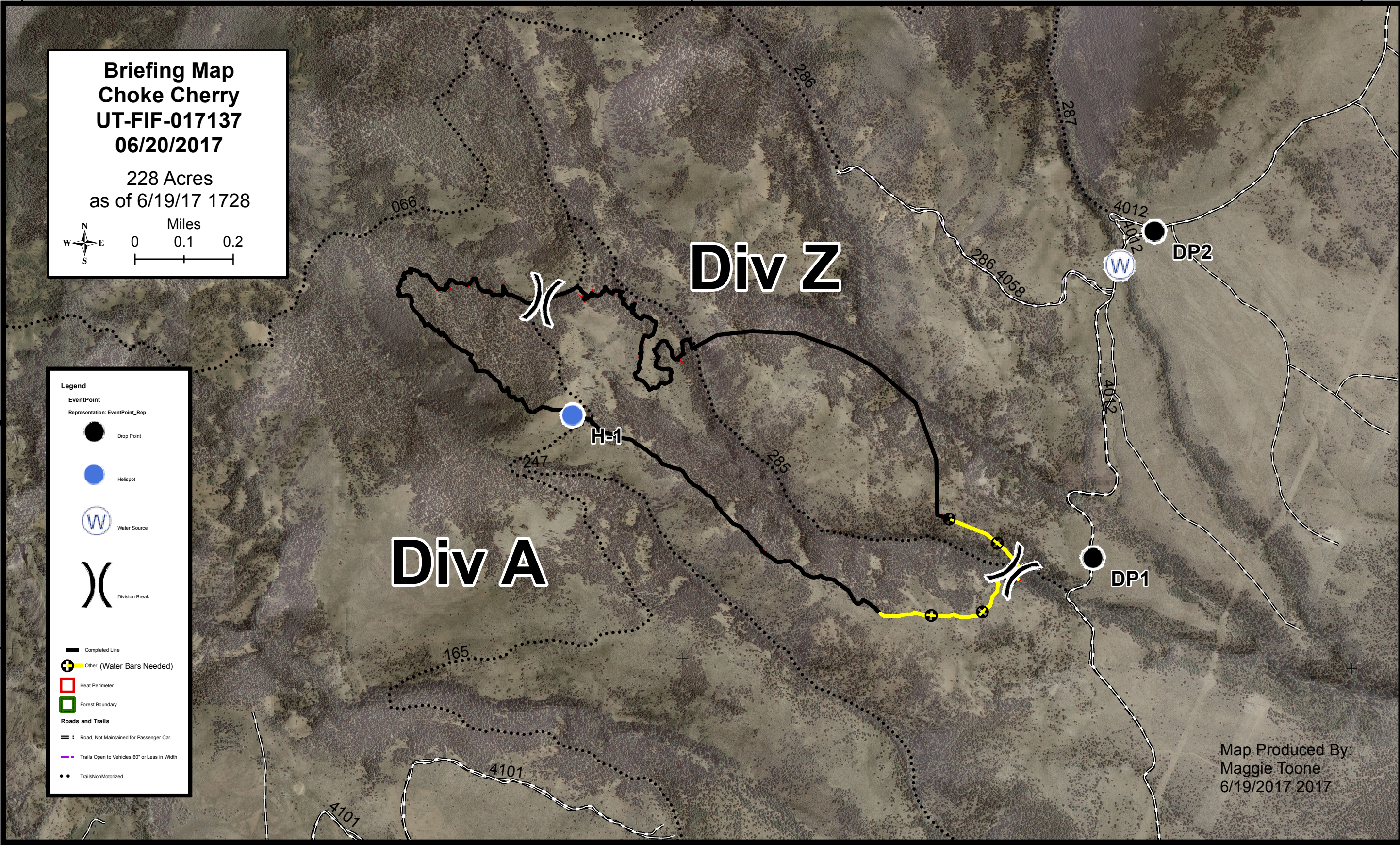
- Drop Point
- Helispot
- ⊕ Water Source
- ⌘ Division Break

Completed Line

- ⊕ Other (Water Bars Needed)
- Heat Perimeter
- Forest Boundary

Roads and Trails

- ⊔ Road, Not Maintained for Passenger Car
- ⊔ Trails Open to Vehicles 60" or Less in Width
- ⋯ Trails NonMotorized



Div A

Div Z

H-1

DP1

DP2

Map Produced By:
 Maggie Toone
 6/19/2017 2017

112°25'30"W

112°24'0"W

112°22'30"W

38°9'0"N

38°9'0"N