

112°25'30"W

112°24'0"W

112°22'30"W

Rehab Map
Choke Cherry
UT-FIF-017137
06/21/2017

211 Acres
 as of 6/20/17 1658

Miles
 0 0.1 0.2

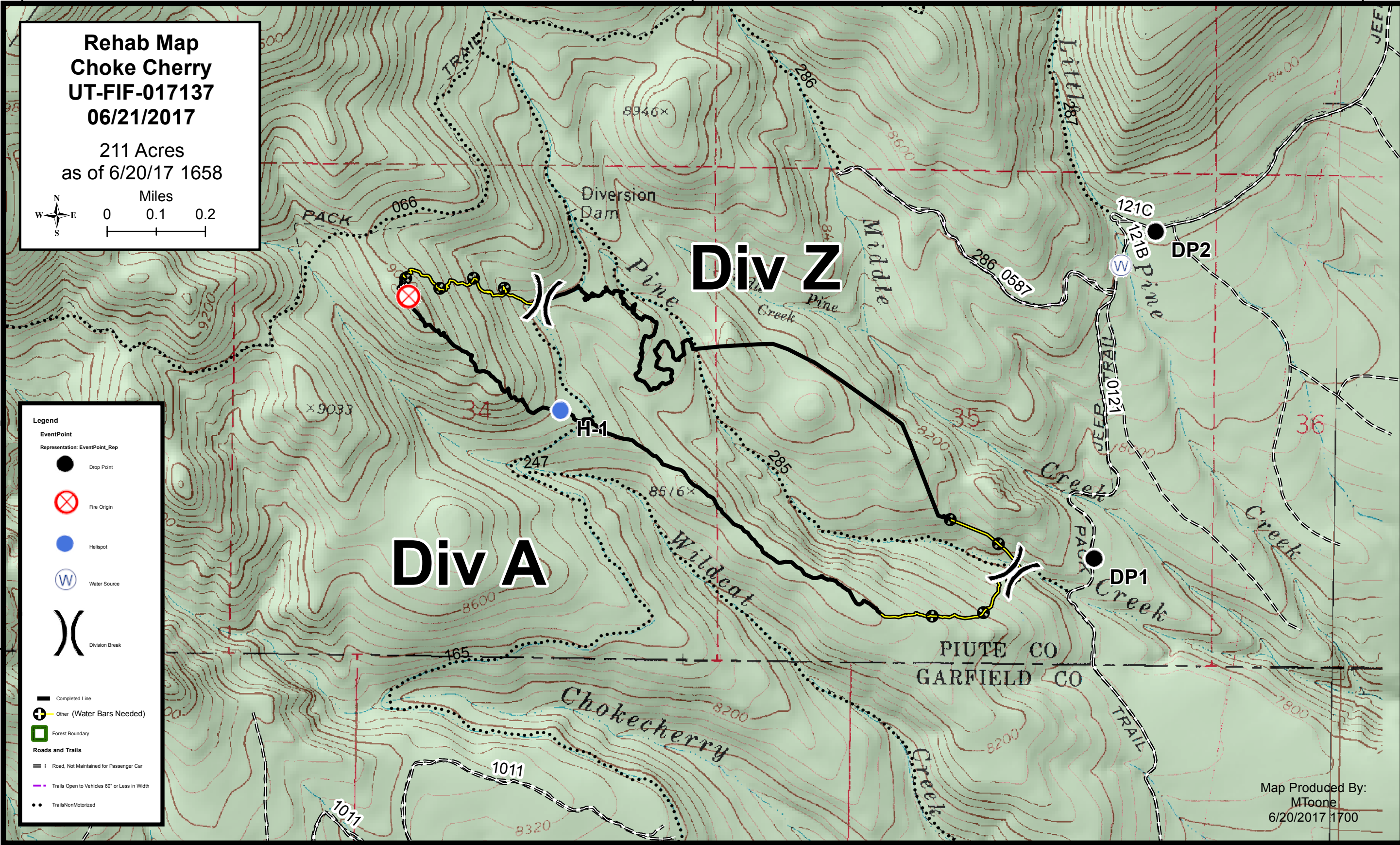
Legend

EventPoint
 Representation: EventPoint_Rep

- Drop Point
- ⊗ Fire Origin
- Helispot
- ⊕ Water Source
- ⌋ Division Break

Roads and Trails

- Completed Line
- ⊕ Other (Water Bars Needed)
- ▭ Forest Boundary
- - - Road, Not Maintained for Passenger Car
- Trails Open to Vehicles 60" or Less in Width
- Trails NonMotorized



Map Produced By:
 MToone
 6/20/2017 1700

112°25'30"W

112°24'0"W

112°22'30"W

38°9'0"N

38°9'0"N