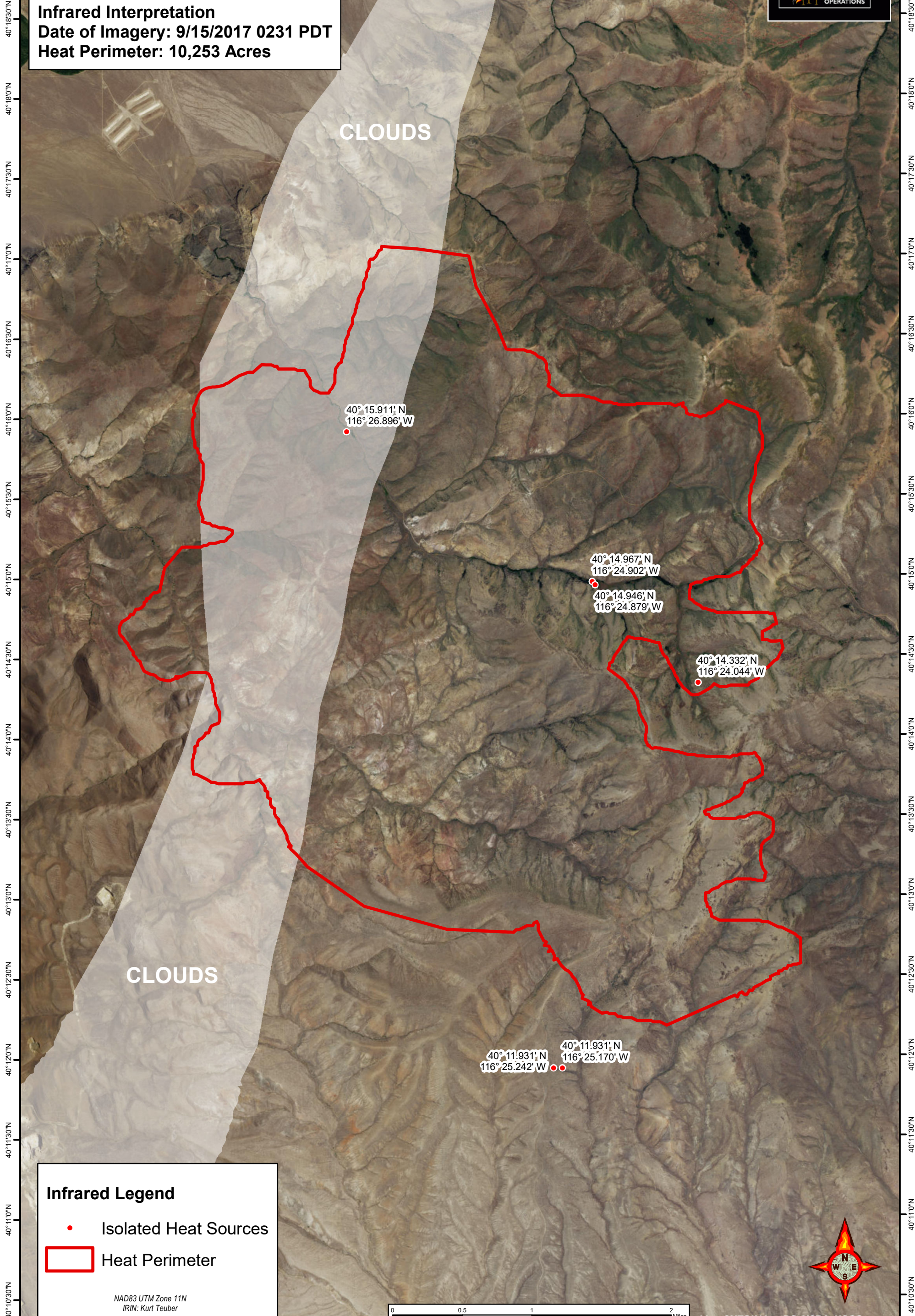


116°29'30"W 116°29'0"W 116°28'30"W 116°28'0"W 116°27'30"W 116°27'0"W 116°26'30"W 116°26'0"W 116°25'30"W 116°25'0"W 116°24'30"W 116°24'0"W 116°23'30"W 116°23'0"W 116°22'30"W

**COTTONWOOD FIRE**  
**NV-EKD-010482**  
Infrared Interpretation  
Date of Imagery: 9/15/2017 0231 PDT  
Heat Perimeter: 10,253 Acres



CLOUDS

CLOUDS

40° 15.911' N  
116° 26.896' W

40° 14.967' N  
116° 24.902' W

40° 14.946' N  
116° 24.879' W

40° 14.332' N  
116° 24.044' W

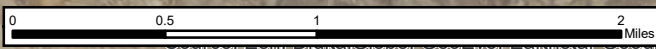
40° 11.931' N  
116° 25.242' W

40° 11.931' N  
116° 25.170' W

**Infrared Legend**

- Isolated Heat Sources
- ▭ Heat Perimeter

NAD83 UTM Zone 11N  
IRIN: Kurt Teuber



AeroGRID, IGN, and the GIS User Community graphics, CNES/Airbus DS, USDA, USGS,

116°29'30"W 116°29'0"W 116°28'30"W 116°28'0"W 116°27'30"W 116°27'0"W 116°26'30"W 116°26'0"W 116°25'30"W 116°25'0"W 116°24'30"W 116°24'0"W 116°23'30"W 116°23'0"W 116°22'30"W