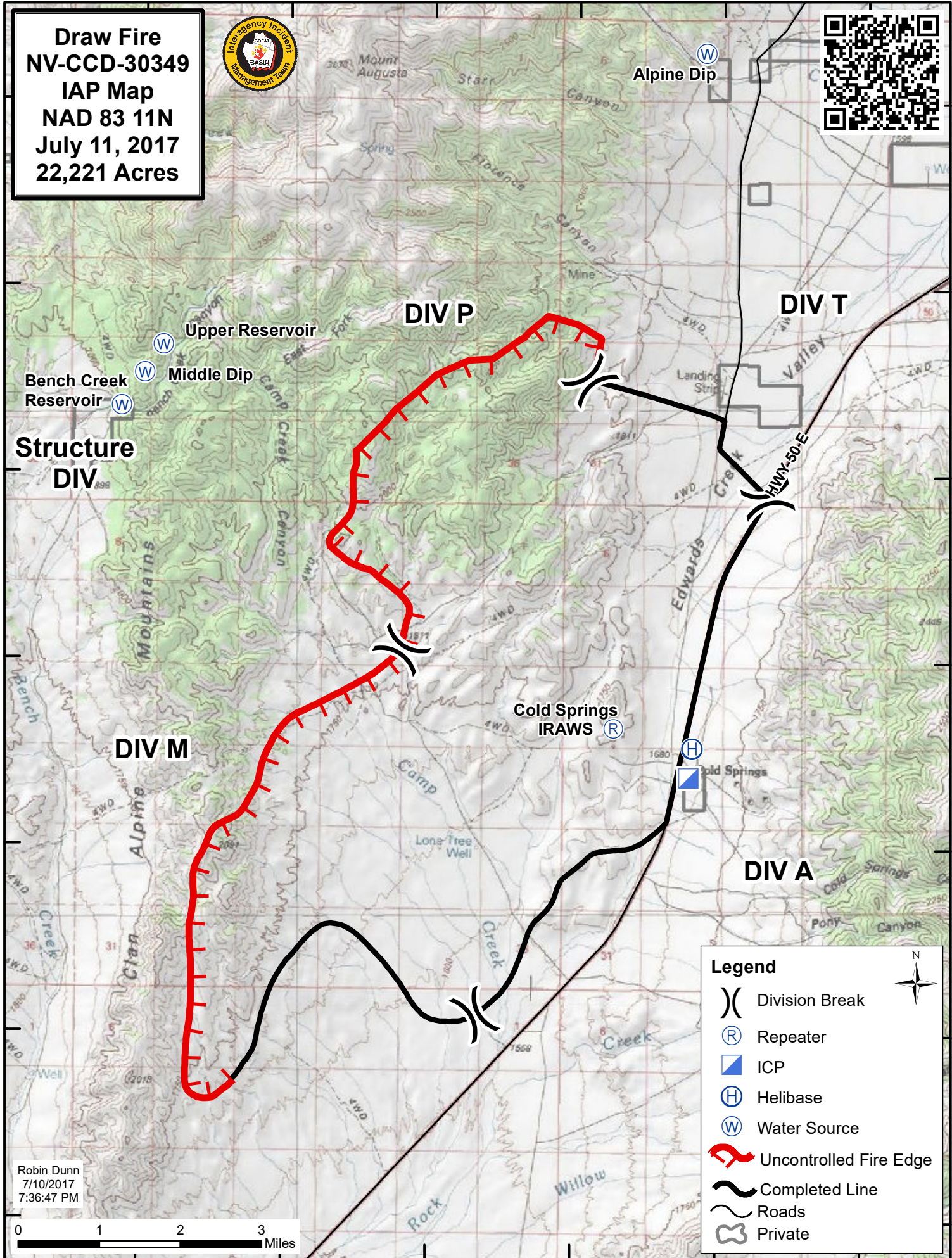


117°58'W 117°56'W 117°54'W 117°52'W 117°50'W 117°48'W

39°32'N 39°30'N 39°28'N 39°26'N 39°24'N 39°22'N 39°20'N

39°32'N 39°30'N 39°28'N 39°26'N 39°24'N 39°22'N 39°20'N

**Draw Fire  
NV-CCD-30349  
IAP Map  
NAD 83 11N  
July 11, 2017  
22,221 Acres**

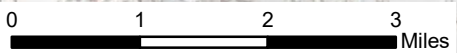


**Legend**

- Division Break
- Repeater
- ICP
- Helibase
- Water Source
- Uncontrolled Fire Edge
- Completed Line
- Roads
- Private



Robin Dunn  
7/10/2017  
7:36:47 PM



117°58'W 117°56'W 117°54'W 117°52'W 117°50'W 117°48'W