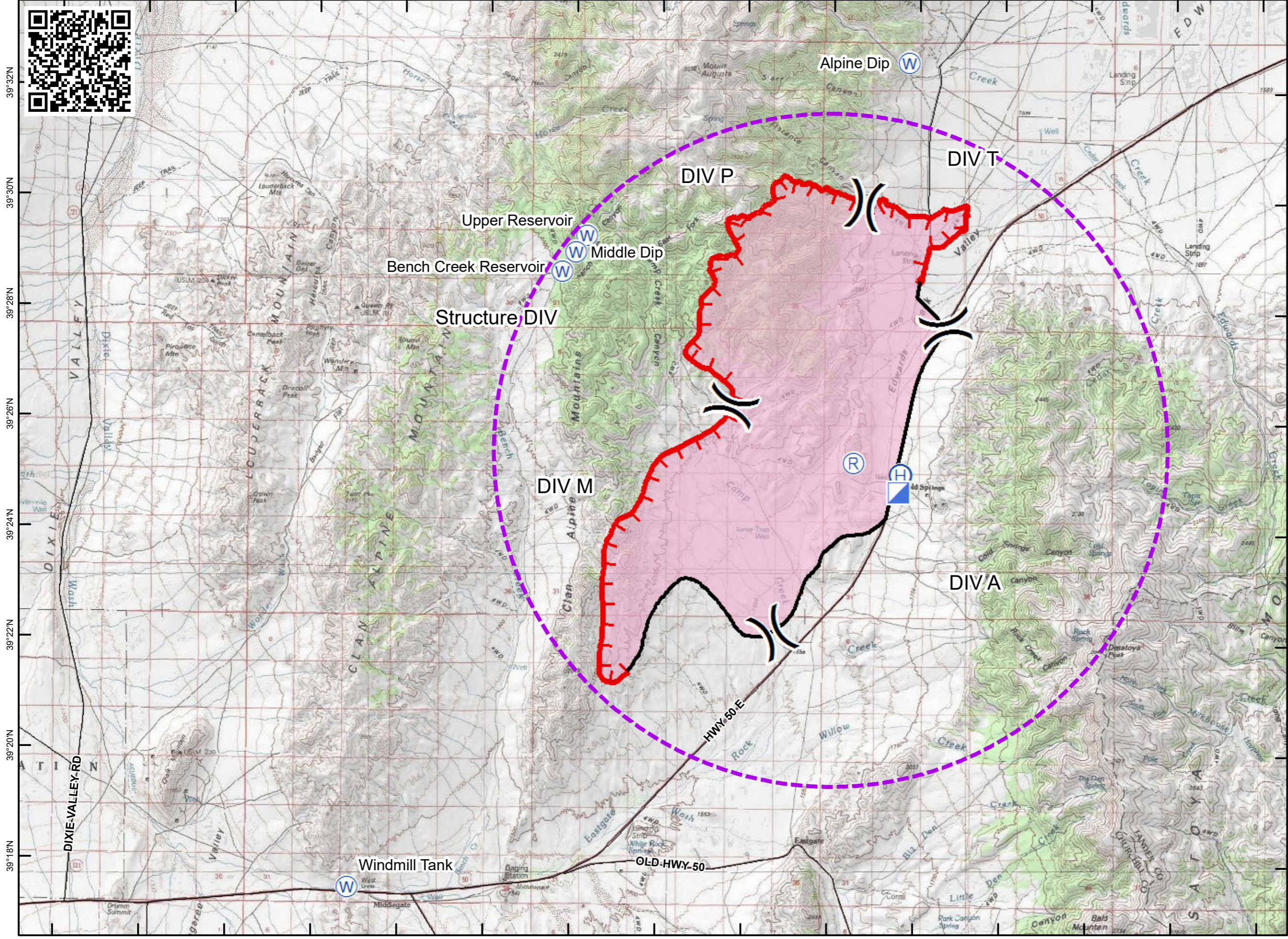


118°10'W 118°8'W 118°6'W 118°4'W 118°2'W 118°0'W 117°58'W 117°56'W 117°54'W 117°52'W 117°50'W 117°48'W 117°46'W 117°44'W 117°42'W



**Draw Fire**  
**NV-CCD-30349**  
**Air Operations Map**  
**NAD 83 11N**  
**July 11, 2017**  
**25,249 Acres**



- Division Break
- Repeater
- Helibase
- Incident Command Post
- Water Source
- Uncontrolled Fire Edge
- Completed Line
- Fire Area
- TFR
- Roads

Point	Latitude	Longitude
Windmill Tank	39 17.526'	118 3.172'
Bench Creek Reservoir	39 28.714'	117 58.306'
Upper Reservoir	39 29.372'	117 57.735'
Alpine Dip	39 32.530'	117 50.251'
Middle Dip	39 29.070'	117 57.991'
Helibase	39 25.075'	117 50.370'
ICP	39 24.761'	117 50.418'

