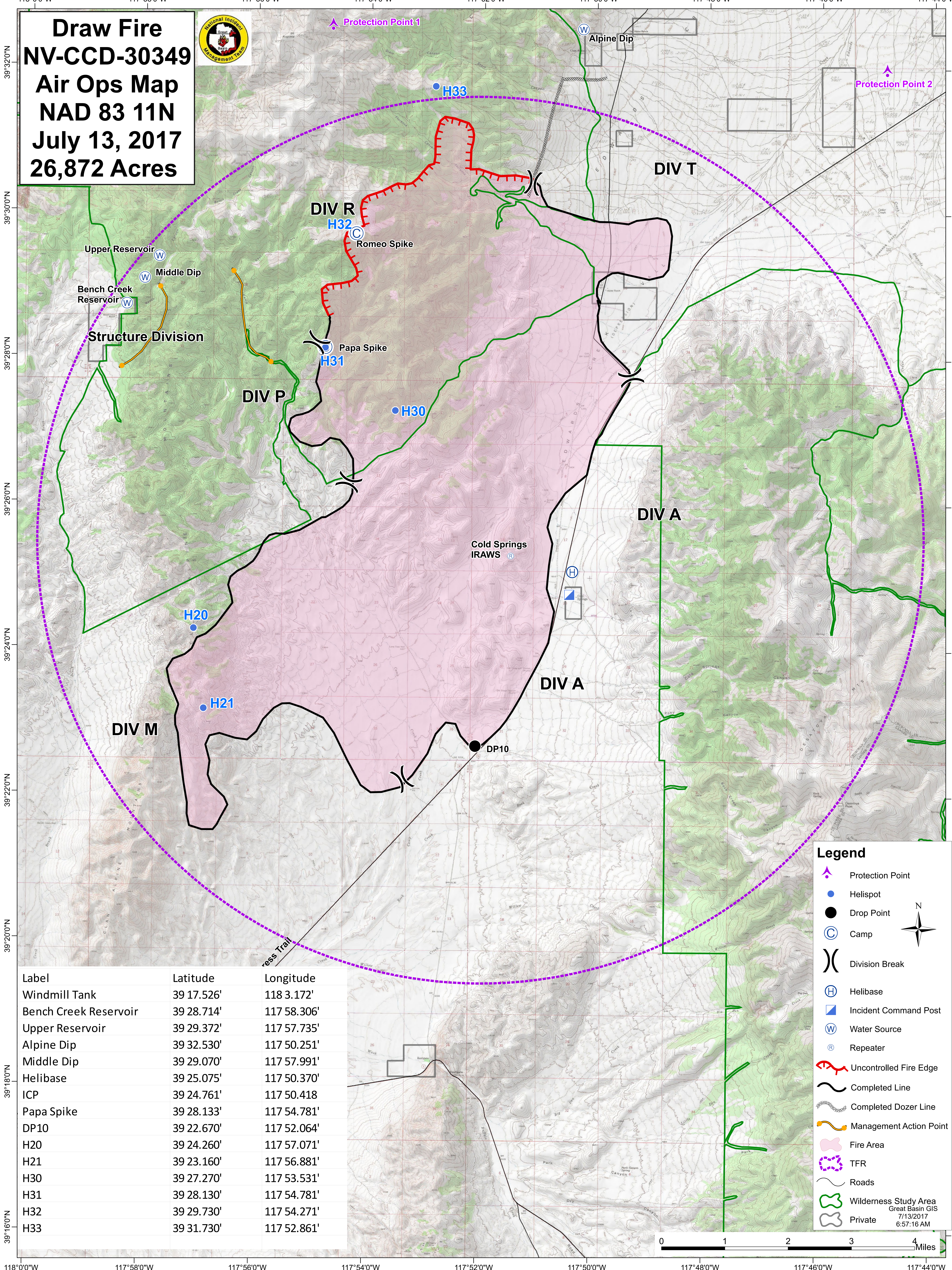


Draw Fire NV-CCD-30349 Air Ops Map NAD 83 11N July 13, 2017 26,872 Acres



Protection Point 1

Protection Point 2



Label	Latitude	Longitude
Windmill Tank	39 17.526'	118 3.172'
Bench Creek Reservoir	39 28.714'	117 58.306'
Upper Reservoir	39 29.372'	117 57.735'
Alpine Dip	39 32.530'	117 50.251'
Middle Dip	39 29.070'	117 57.991'
Helibase	39 25.075'	117 50.370'
ICP	39 24.761'	117 50.418'
Papa Spike	39 28.133'	117 54.781'
DP10	39 22.670'	117 52.064'
H20	39 24.260'	117 57.071'
H21	39 23.160'	117 56.881'
H30	39 27.270'	117 53.531'
H31	39 28.130'	117 54.781'
H32	39 29.730'	117 54.271'
H33	39 31.730'	117 52.861'

Legend

- Protection Point
- Helispot
- Drop Point
- Camp
- Division Break
- Helibase
- Incident Command Post
- Water Source
- Repeater
- Uncontrolled Fire Edge
- Completed Line
- Completed Dozer Line
- Management Action Point
- Fire Area
- TFR
- Roads
- Wilderness Study Area
- Private

Great Basin GIS
7/13/2017
6:57:16 AM

