

117°54'0"W

117°52'0"W

117°50'0"W

117°48'0"W

117°46'0"W

Draw Fire
NV-CCD-30349
DIV T Map
NAD 83 11N
July 14, 2017
27,506 Acres



39°32'0"N

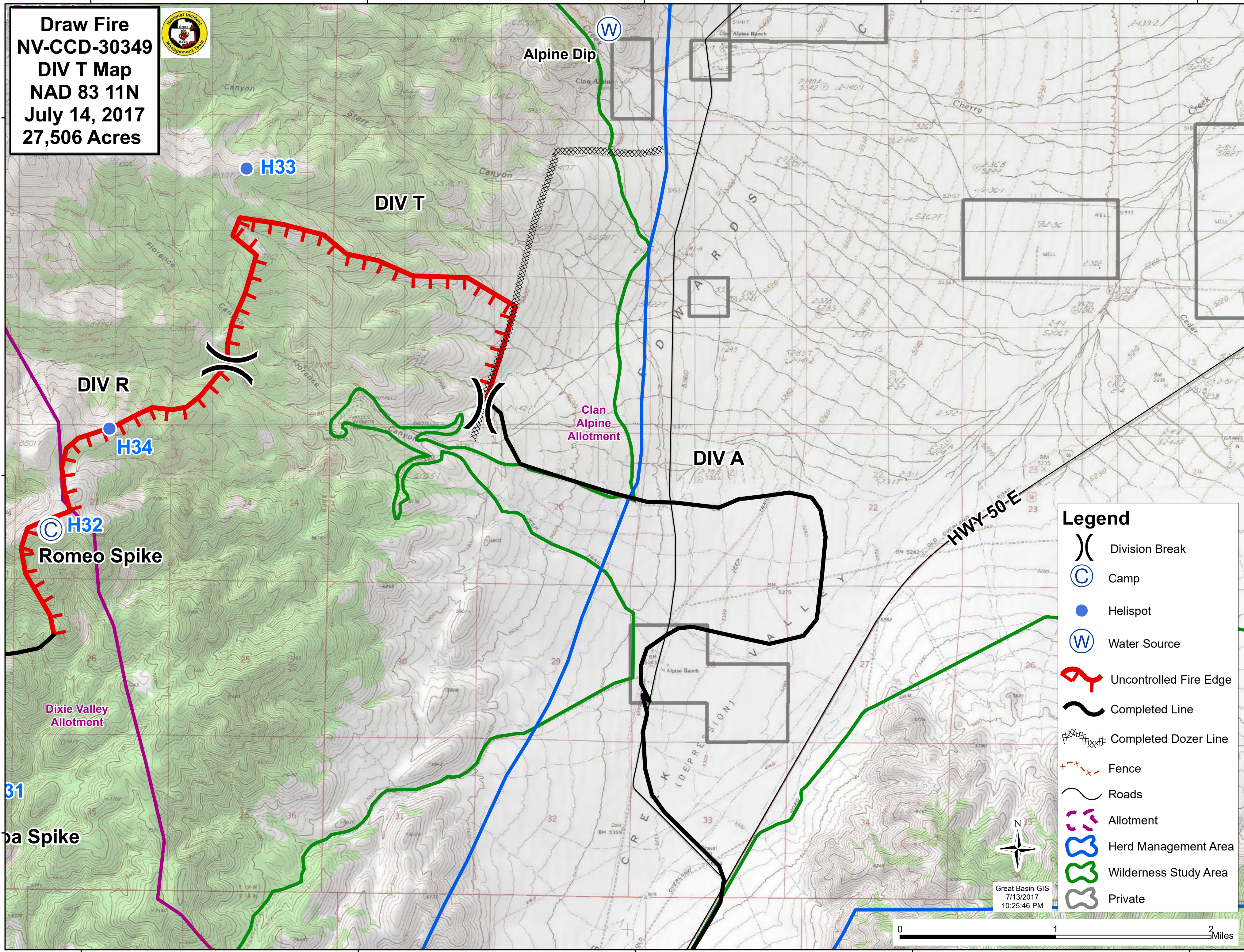
39°32'0"N

39°30'0"N

39°30'0"N

39°28'0"N

39°28'0"N

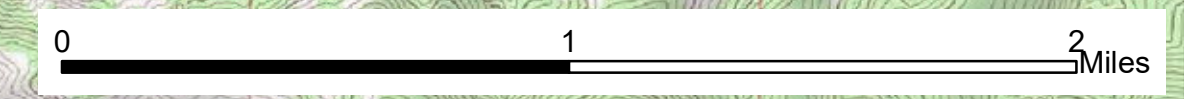


Legend

- (X) Division Break
- (C) Camp
- Helispot
- (W) Water Source
- Red dashed line with ticks Uncontrolled Fire Edge
- Thick black line Completed Line
- Hatched black line Completed Dozer Line
- Orange dashed line Fence
- Thin black line Roads
- Pink dashed line Allotment
- Purple dashed line Herd Management Area
- Green dashed line Wilderness Study Area
- Grey dashed line Private



Great Basin GIS
 7/13/2017
 10:25:46 PM



117°54'0"W

117°52'0"W

117°50'0"W

117°48'0"W

117°46'0"W