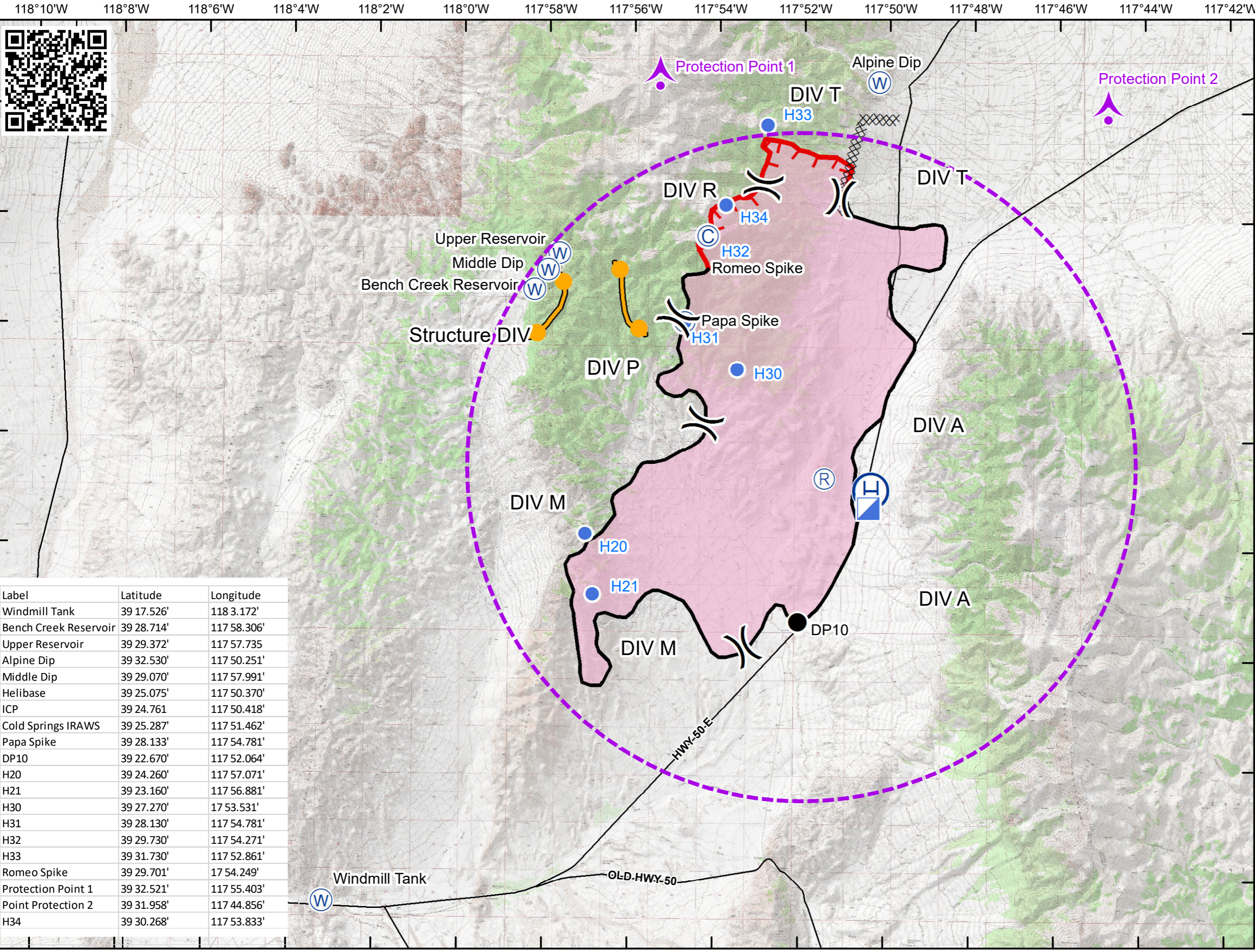


# Draw Fire NV-CCD-30349 Air Operations Map NAD 83 11N July 14, 2017 27,506 Acres



- ### EventPoint Legend
- Protection Point
  - Helispot
  - Drop Point
  - Helibase
  - Incident Command Post
  - Water Source
- ### Feature Category (Point Type)
- Division Break
  - Camp
  - Repeater
  - Uncontrolled Fire Edge
  - Completed Line
  - Completed Dozer Line
  - Management Action Point
  - Fire Area
  - TFR

Label	Latitude	Longitude
Windmill Tank	39 17.526'	118 3.172'
Bench Creek Reservoir	39 28.714'	117 58.306'
Upper Reservoir	39 29.372'	117 57.735'
Alpine Dip	39 32.530'	117 50.251'
Middle Dip	39 29.070'	117 57.991'
Helibase	39 25.075'	117 50.370'
ICP	39 24.761	117 50.418'
Cold Springs IRAWS	39 25.287'	117 51.462'
Papa Spike	39 28.133'	117 54.781'
DP10	39 22.670'	117 52.064'
H20	39 24.260'	117 57.071'
H21	39 23.160'	117 56.881'
H30	39 27.270'	117 53.531'
H31	39 28.130'	117 54.781'
H32	39 29.730'	117 54.271'
H33	39 31.730'	117 52.861'
Romeo Spike	39 29.701'	117 54.249'
Protection Point 1	39 32.521'	117 55.403'
Point Protection 2	39 31.958'	117 44.856'
H34	39 30.268'	117 53.833'

