

| Point Feature | Name | Lat | Long | Travel Time |
|-----------------------|-------------|---------------|----------------|-----------------|
| Camp | Spike | N 40° 45.053' | W 116° 40.812' | |
| Camp | Midas Spike | N 41° 8.285' | W 117° 2.762' | 1.5 hrs. to ICP |
| Drop Point | DP - 1 | N 41° 25.423' | W 116° 39.035' | |
| Drop Point | DP - 9 | N 40° 54.294' | W 116° 53.866' | |
| Drop Point | DP - 10 | N 40° 56.812' | W 116° 51.090' | 1 hr. to ICP |
| Drop Point | DP - 30 | N 41° 3.884' | W 116° 25.442' | 1.5 hrs. to ICP |
| Drop Point | DP - 40 | N 40° 50.532' | W 116° 32.933' | |
| Drop Point | DP - 61 | N 41° 33.300' | W 116° 27.780' | |
| Drop Point | DP - 65 | N 41° 28.818' | W 116° 33.070' | |
| Helibase | | N 40° 44.585' | W 116° 31.271' | |
| Helispot | | N 40° 36.434' | W 116° 52.392' | |
| Helispot | Midas LZ | N 41° 12.346' | W 116° 46.749' | |
| Incident Command Post | | N 40° 38.190' | W 116° 56.268' | |
| Repeater | CMD 8 | N 40° 42.713' | W 116° 49.856' | |
| Repeater | CMD 9 | N 41° 16.371' | W 116° 49.123' | |
| Repeater | CMD 10 | N 41° 24.147' | W 116° 35.369' | |
| Water Source | | N 41° 4.100' | W 116° 25.640' | |
| Water Source | | N 40° 56.630' | W 116° 26.100' | |
| Water Source | Dip - 1 | N 41° 8.289' | W 117° 2.762' | |
| Water Source | Dip - 5 | N 41° 32.63' | W 116° 38.0' | |
| Water Source | Dip - 10 | N 41° 31.976' | W 116° 32.890' | |
| Water Source | Dip - 15 | N 41° 12.32' | W 116° 41.72' | |
| Water Source | Dip - 20 | N 41° 40.78' | W 116° 40.37' | |

Four Seasons Complex
 Roosters Comb - 218,380 Acres
 Snowstorm - 146,109 Acres
 Cornucopia - 1,559 Acres
 4 Mile - 292 Acres

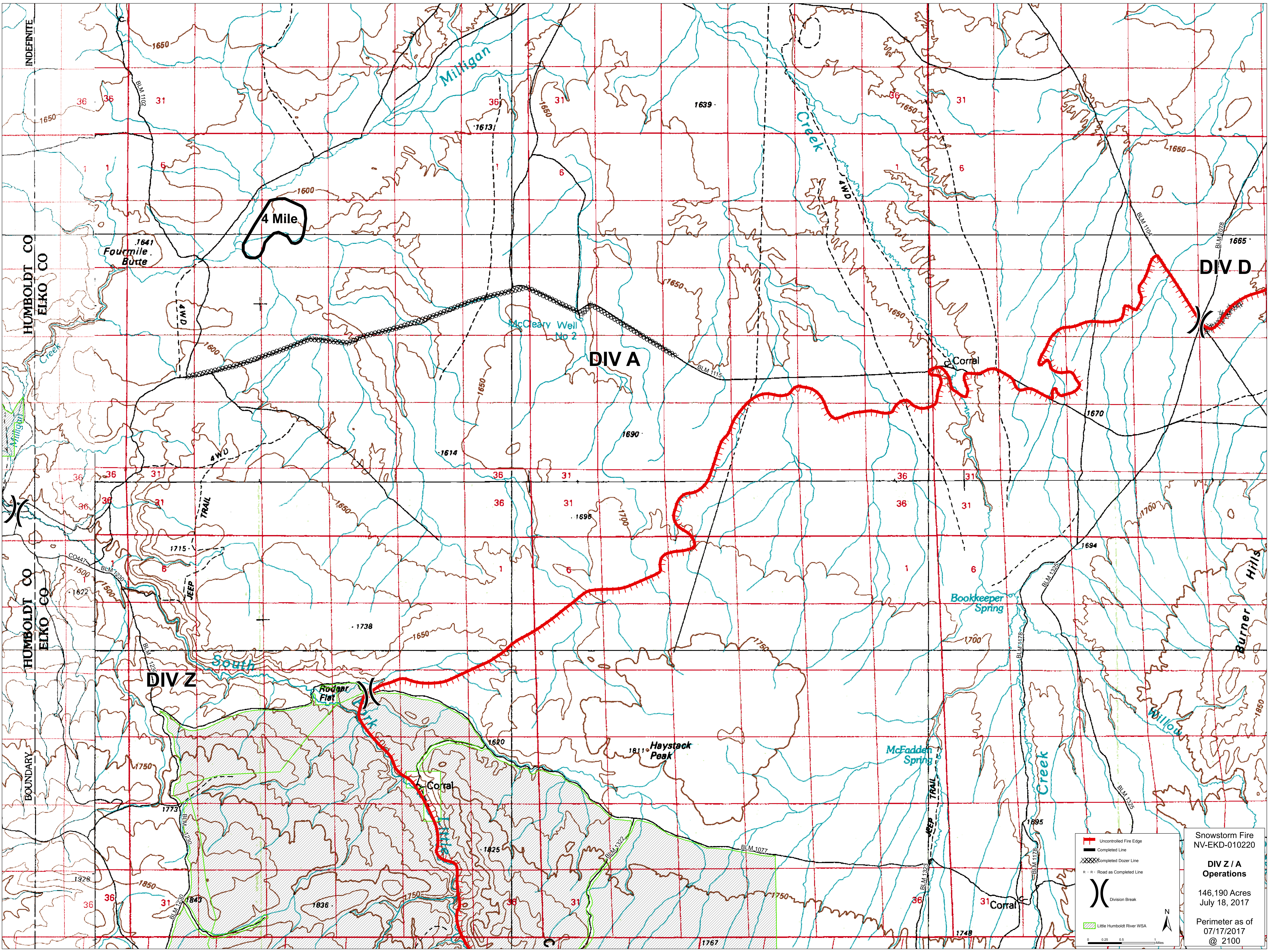
Vicinity
 July 18, 2017
 Perimeter as of
 07/17/2017
 @ 2100

Legend

- (C) Camp
- (H) Helibase
- (W) Water Source
- (R) Repeater
- (I) Incident Command Post
- (DP) Drop Point
- (P) Wildfire Daily Fire Perimeter

0 2.5 5 10 Miles

ICP



— Uncontrolled Fire Edge

 — Completed Line

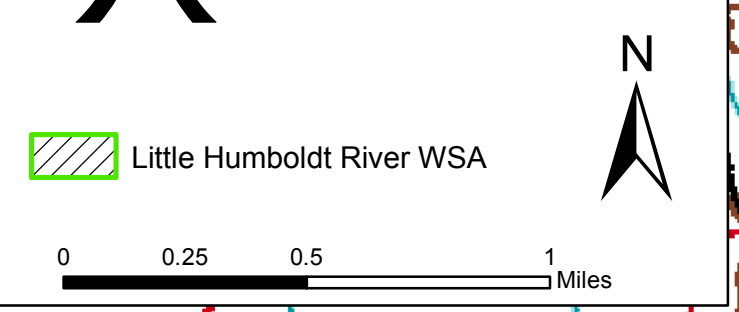
 XXXX Completed Dozer Line

 R - R Road as Completed Line

)(Division Break

 Little Humboldt River WSA

Snowstorm Fire
 NV-EKD-010220
**DIV Z / A
 Operations**
 146,190 Acres
 July 18, 2017
 Perimeter as of
 07/17/2017
 © 2100



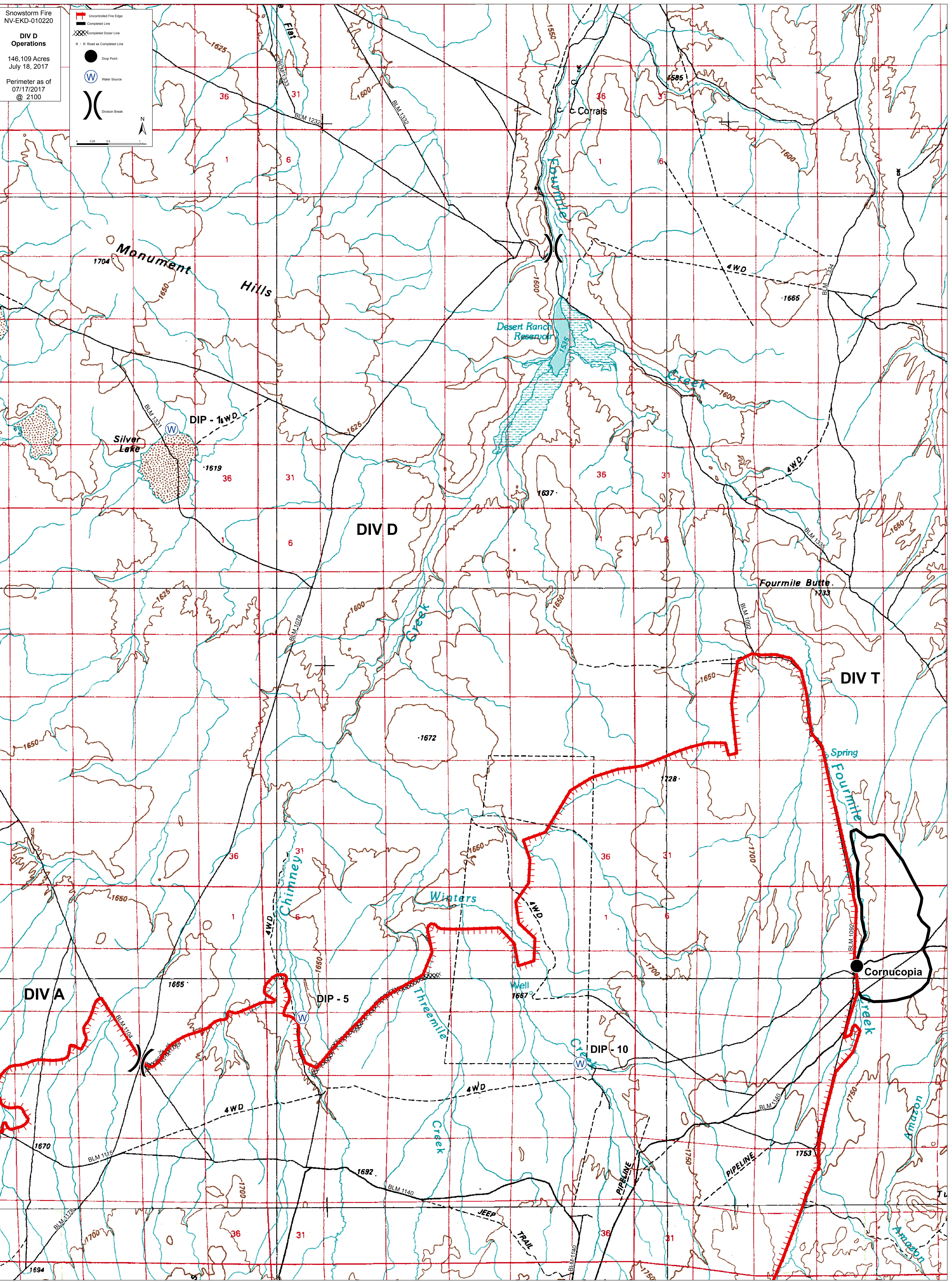
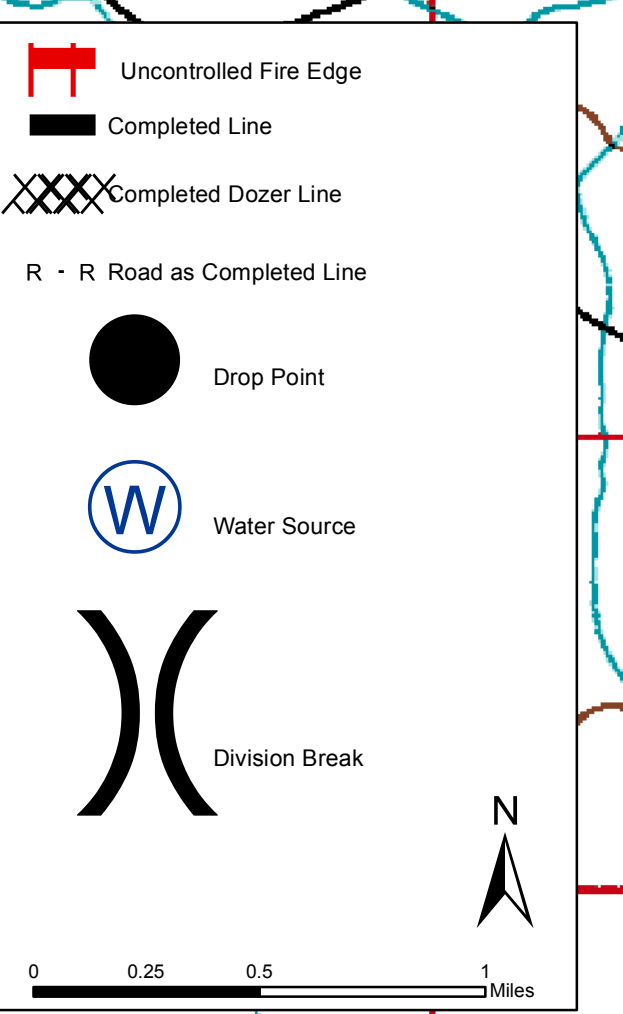
Snowstorm Fire
NV-EKD-010220

**DIV D
Operations**

146,109 Acres
July 18, 2017

Perimeter as of
07/17/2017
@ 2100

Uncontrolled Fire Edge
Completed Line
Completed Dozer Line
R - R Road as Completed Line
Drop Point
Water Source
Division Break



Snowstorm Fire
NV-EKD-010220

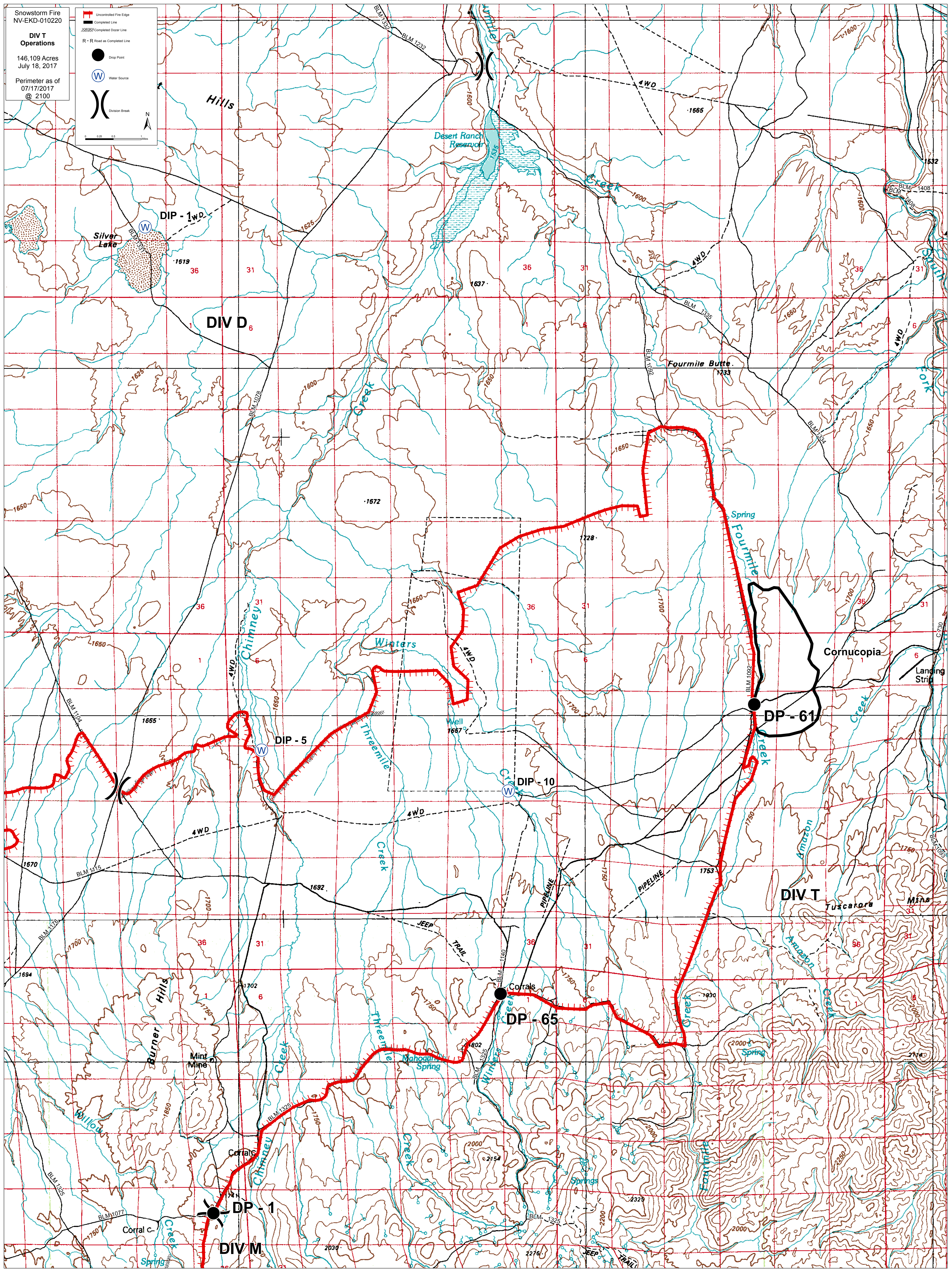
DIV T
Operations

146,109 Acres
July 18, 2017

Perimeter as of
07/17/2017
@ 2100

Uncontrolled Fire Edge
Completed Line
Completed Dzer Line
R - R Road as Completed Line

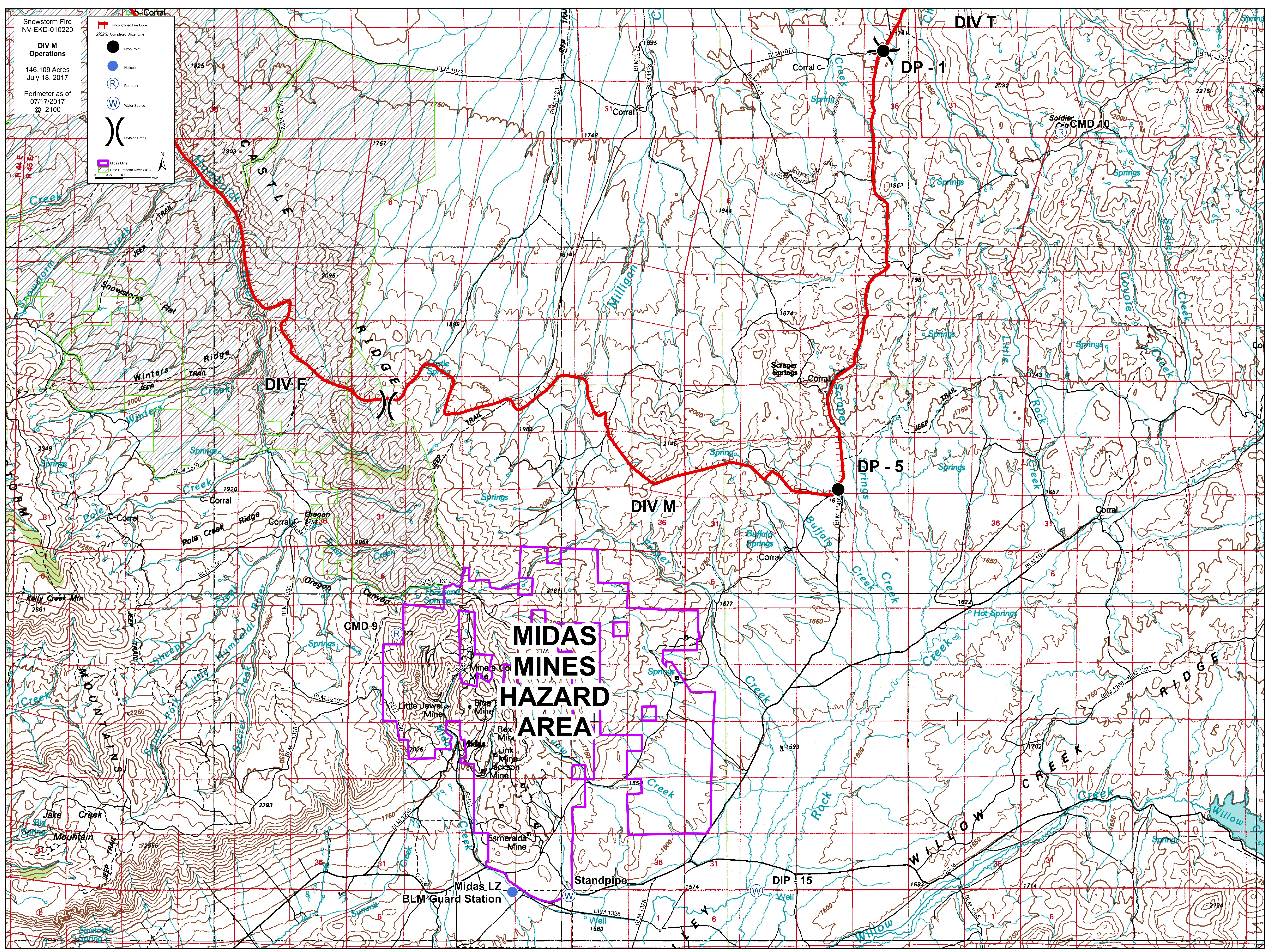
Drop Point
Water Source
Division Break



Showstorm Fire
 NV-EKD-010220
DIV M
 Operations
 146,109 Acres
 July 18, 2017
 Perimeter as of
 07/17/2017
 @ 2100

- Uncontrolled Fire Edge
- Completed Outer Line
- Drip Point
- Hotspot
- Repeater
- Water Source
- Division Break
- Midas Mine
- Little Humboldt River WSA

0 0.25 0.5 1 Miles
 N



MIDAS
MINES
HAZARD
AREA

DIV F

DIV M

DIV T

DP - 1

DP - 5

CMD 9

CMD 10

DIP - 15

BLM Guard Station

Standpipe

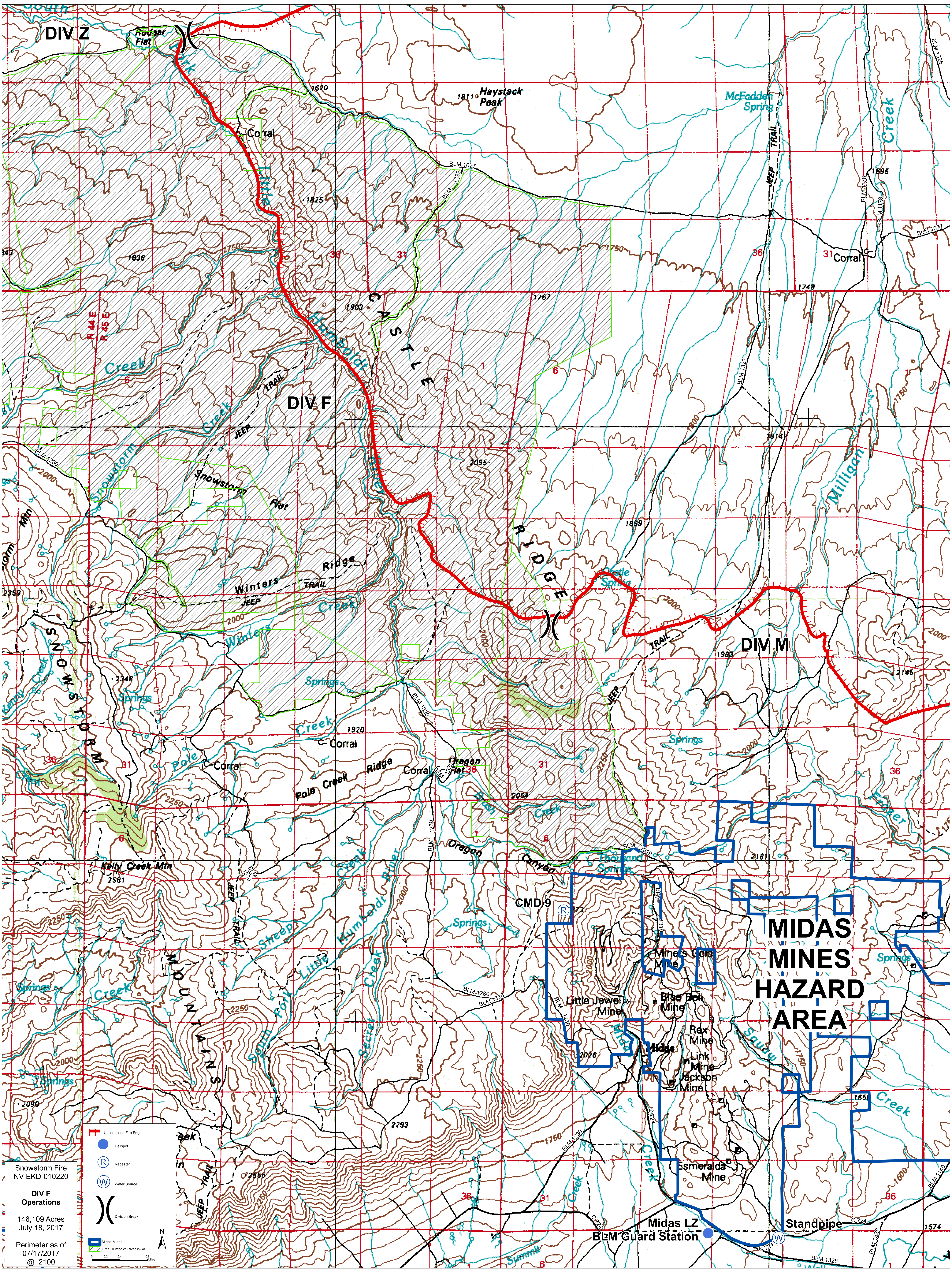
Midas LZ

Mines Co Mine
 Rex Link Mine
 Jackson Mine
 Esmeralda Mine
 Little Jewel Mine
 Blue E Mine
 Oregon Mine

Showstorm Fire
 NV-EKD-010220
DIV M
 Operations
 146,109 Acres
 July 18, 2017
 Perimeter as of
 07/17/2017
 @ 2100

- Uncontrolled Fire Edge
- Completed Outer Line
- Drip Point
- Hotspot
- Repeater
- Water Source
- Division Break
- Midas Mine
- Little Humboldt River WSA

0 0.25 0.5 1 Miles
 N



DIV Z

Haystack Peak

Corral

Haystack Peak

McFadden Spring

Creek

1836

1825

BLM 1077

36

31

1748

DIV F

CASILE

Creek

TRAIL

JEEP

Snowstorm Flat

Winters Ridge

TRAIL

JEEP

Springs

Corral

Corral

Corral

TRAIL

JEEP

DIV M

RIDGE

TRAIL

JEEP

Springs

SWANSONS

Kelly Creek Mtn

2581

WAINMAN

2250

2250

2250

2250

2250

2250

2250

2250

2250

Corral

Corral

TRAIL

JEEP

TRAIL

JEEP

TRAIL

JEEP

TRAIL

JEEP

TRAIL

JEEP

TRAIL

JEEP

TRAIL

JEEP

TRAIL

JEEP

TRAIL

JEEP

TRAIL

JEEP

CMD 9

Little Jewel Mine

Midas Mine

Blue Bell Mine

Rax Mine

Link Mine

Jackson Mine

Emeralda Mine

Midas LZ

BLM Guard Station

MIDAS MINES HAZARD AREA

Standpipe

1574

Snowstorm Fire

NV-EKD-010220

DIV F Operations

146,109 Acres

July 18, 2017

Perimeter as of 07/17/2017 @ 2100

- Uncontrolled Fire Edge
- Hotspot
- Repeater
- Water Source
- Division Break
- Midas Mines
- Little Humboldt River WSA

Scale: 0 0.2 0.4 Miles