

| Point Feature | Name | Lat | Long | Travel Time |
|-----------------------|----------------|---------------|----------------|-----------------|
| Camp | IL Ranch Spike | N 41° 34.050' | W 116° 24.200' | 2.5 hrs. to ICP |
| Camp | Midas Spike | N 41° 8.285' | W 117° 2.762' | 1.5 hrs. to ICP |
| Drop Point | DP - 1 | N 41° 25.423' | W 116° 39.035' | |
| Drop Point | DP - 5 | N 41° 18.597' | W 116° 40.003' | |
| Drop Point | DP - 9 | N 40° 54.294' | W 116° 53.866' | |
| Drop Point | DP - 61 | N 41° 33.300' | W 116° 27.780' | |
| Drop Point | DP - 65 | N 41° 28.818' | W 116° 33.070' | |
| Helibase | | N 40° 44.585' | W 116° 31.271' | |
| Helispot | | N 40° 36.434' | W 116° 52.392' | |
| Helispot | Midas LZ | N 41° 12.346' | W 116° 46.749' | |
| Incident Command Post | | N 40° 38.190' | W 116° 56.268' | |
| Mobile Weather | | N 41° 14.676' | W 116° 46.740' | |
| Repeater | CMD 7 | N 41° 40.835' | W 116° 8.203' | |
| Repeater | CMD 8 | N 40° 42.713' | W 116° 49.856' | |
| Repeater | CMD 9 | N 41° 16.371' | W 116° 49.123' | |
| Repeater | CMD 10 | N 41° 24.147' | W 116° 35.369' | |
| Water Source | Dip - 1 | N 41° 8.289' | W 117° 2.762' | |
| Water Source | Dip - 5 | N 41° 32.63' | W 116° 38.0' | |
| Water Source | Dip - 7 | N 41° 32.63' | W 116° 38.0' | |
| Water Source | Dip - 8 | N 41° 32.63' | W 116° 38.0' | |
| Water Source | Dip - 10 | N 41° 31.976' | W 116° 32.890' | |
| Water Source | Dip - 15 | N 41° 12.32' | W 116° 41.72' | |
| Water Source | Dip - 20 | N 41° 40.78' | W 116° 40.37' | |

Four Seasons Complex
 Roosters Comb - 218,380 Acres
 Snowstorm - 153,651 Acres
 Cornucopia - 1,559 Acres
 4 Mile - 292 Acres

Vicinity
 July 19, 2017
 Perimeter as of
 07/18/2017
 @ 1730

Legend

- Camp
- Drop Point
- Helispot
- Incident Command Post
- Mobile Weather Unit
- Repeater
- Water Source
- Division Break
- Fire Polygon

Scale
 0 2 4 6 8 10 Miles

North Arrow

ICP

CMD 8

CMD 9

CMD 10

DIP - 15

DIP - 20
Midas Spike

Midas LZ
BLM Guard Station

DIV M
DP - 5

DIV F

DIV Z

Snowstorm

DIV A

DIV D

DIP - 1

DIP - 5

DIP - 7

DIP - 8

DIP - 10

DP - 61

DP - 65

DP - 1

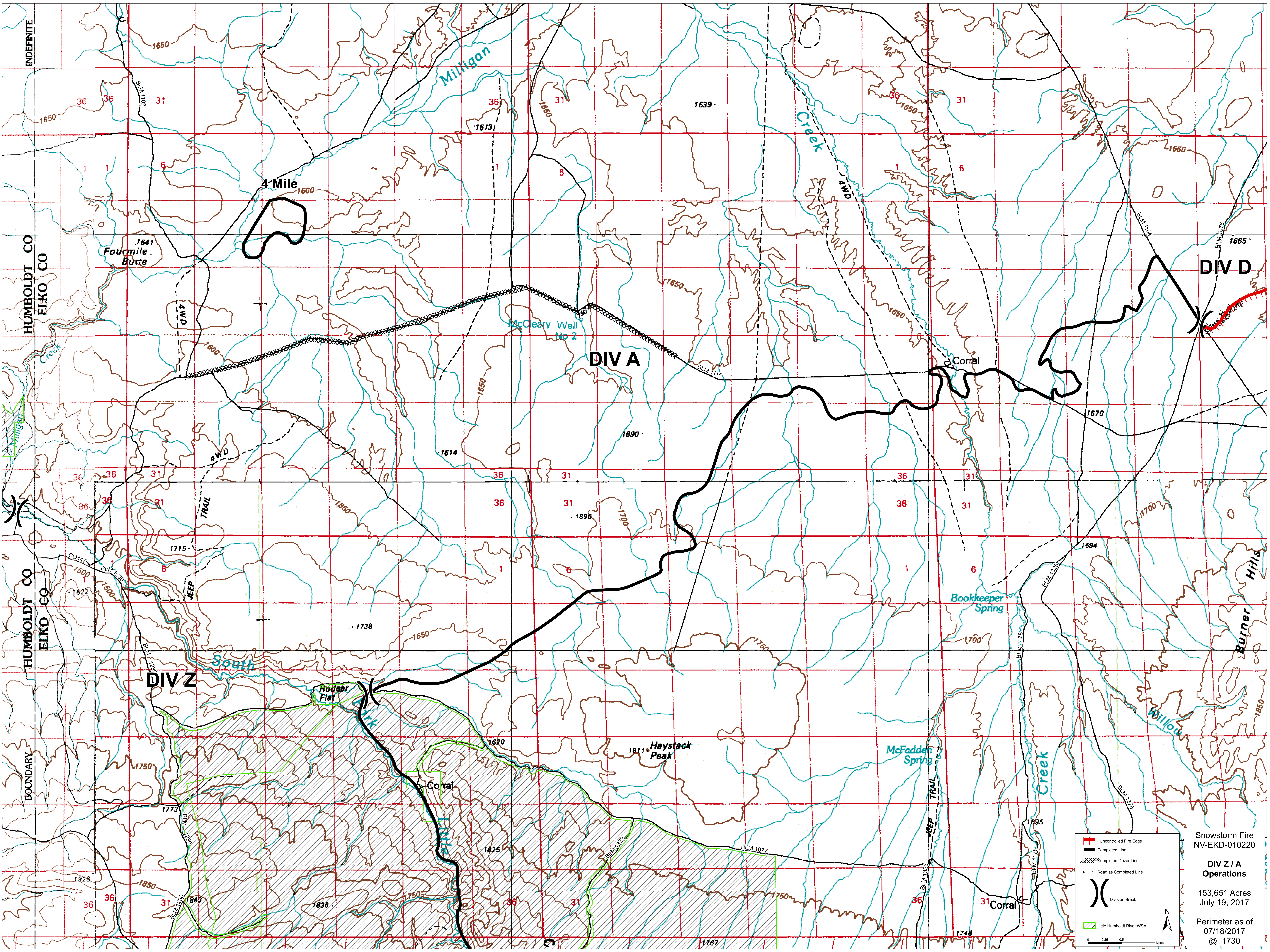
CMD 10

DIV T

Cornucopia

IL Ranch Spike

4 Mile



HUMBOLDT CO
ELKO CO
HUMBOLDT CO
ELKO CO
BOUNDARY

4 Mile

DIV A

DIV Z

DIV D

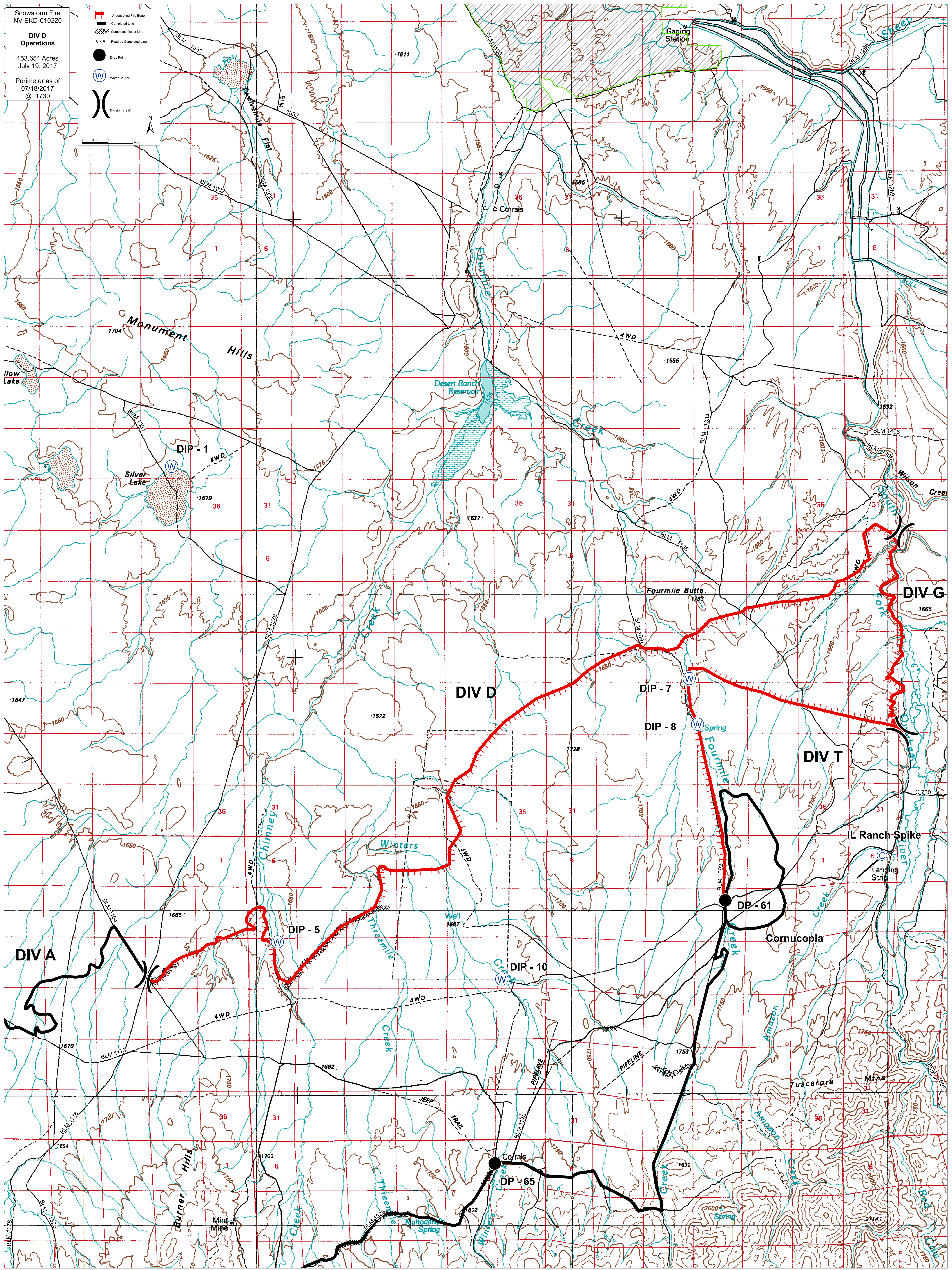
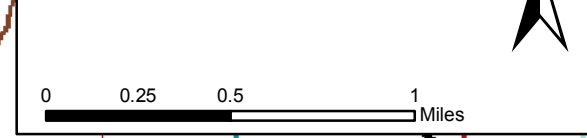
Uncontrolled Fire Edge
Completed Line
Completed Dozer Line
Road as Completed Line
Division Break
Little Humboldt River WSA

0 0.25 0.5 1 Miles

Snowstorm Fire
NV-EKD-010220
**DIV Z / A
Operations**
153,651 Acres
July 19, 2017
Perimeter as of
07/18/2017
© 1730

Legend:

- Uncontrolled Fire Edge
- Completed Line
- Completed Dozer Line
- R - R Road as Completed Line
- Drop Point
- Water Source
- Division Break



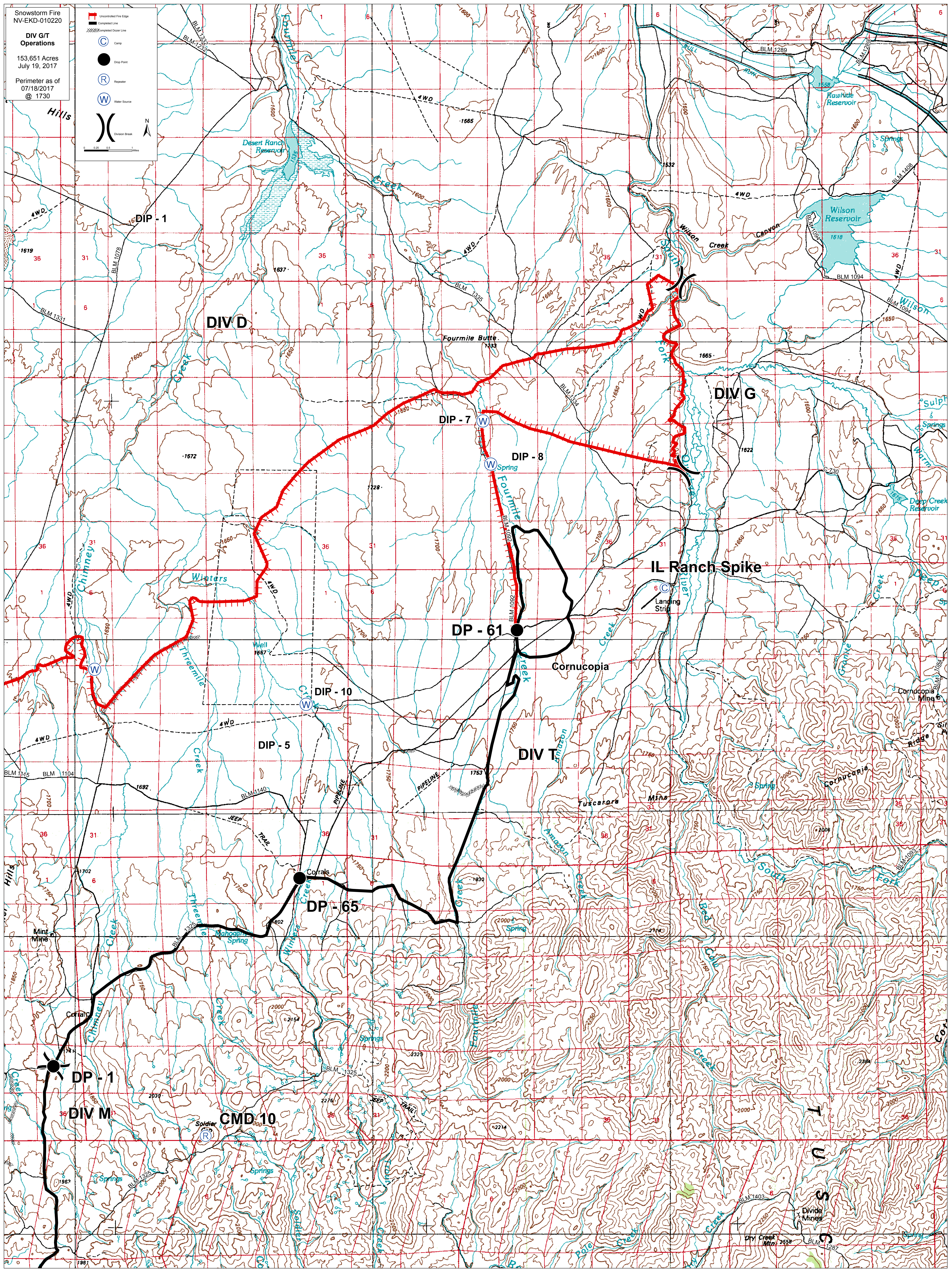
Snowstorm Fire
NV-EKD-010220

**DIV G/T
Operations**

153,651 Acres
July 19, 2017

Perimeter as of
07/18/2017
@ 1730

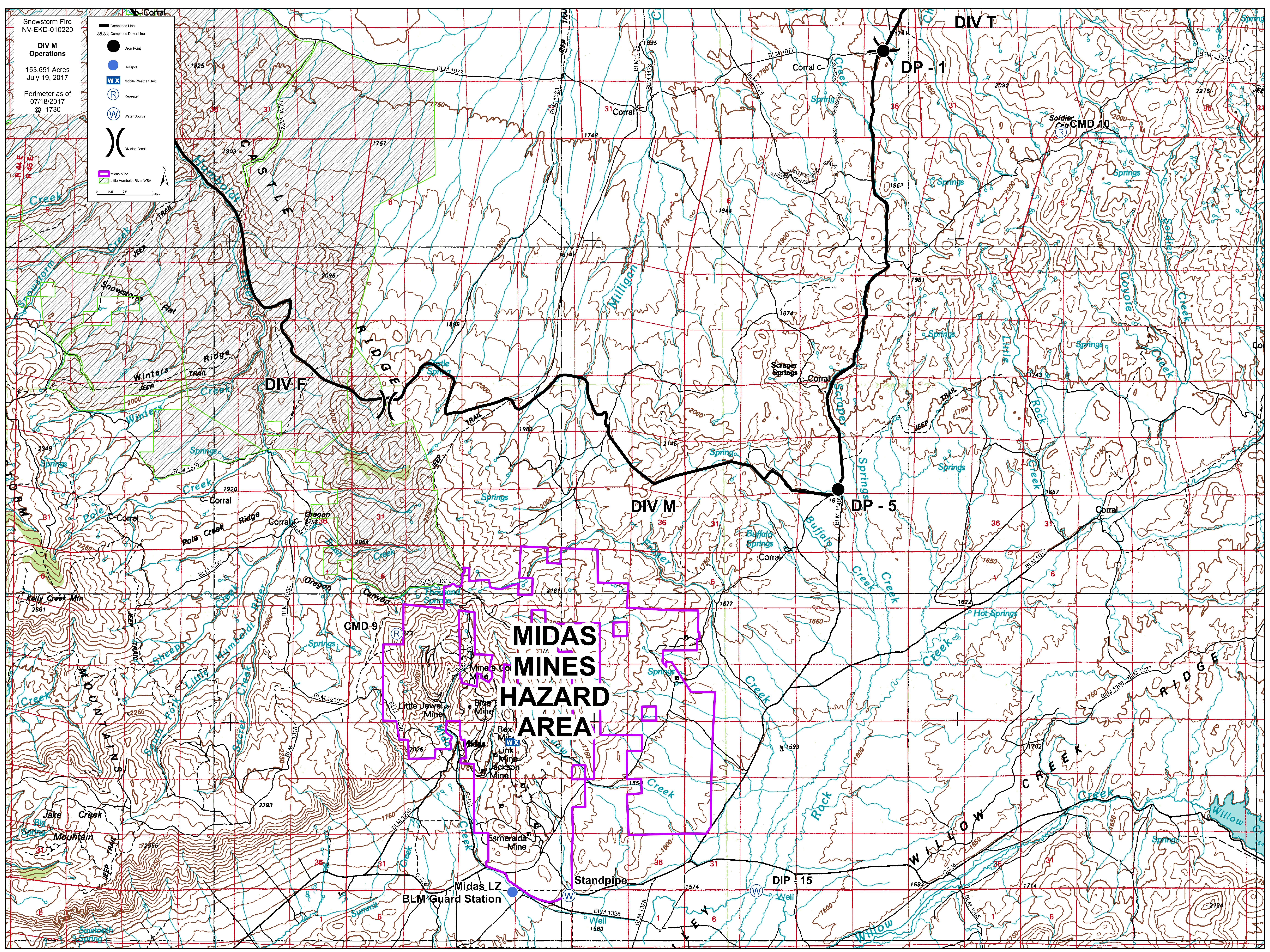
Scale: 0 0.5 1 Miles



Showstorm Fire
 NV-EKD-010220
DIV M
 Operations
 153,651 Acres
 July 19, 2017
 Perimeter as of
 07/18/2017
 @ 1730

- Completed Line
- Completed Doser Line
- Drop Point
- Hotspot
- Mobile Weather Unit
- Repeater
- Water Source
- Division Break
- Midas Mine
- Little Humboldt River WSA

0 0.25 0.5 1 Miles



MIDAS
MINES
HAZARD
AREA

DIV F

DIV M

DIV T

DP - 1

DP - 5

DIP - 15

CMD 10

CMD 9

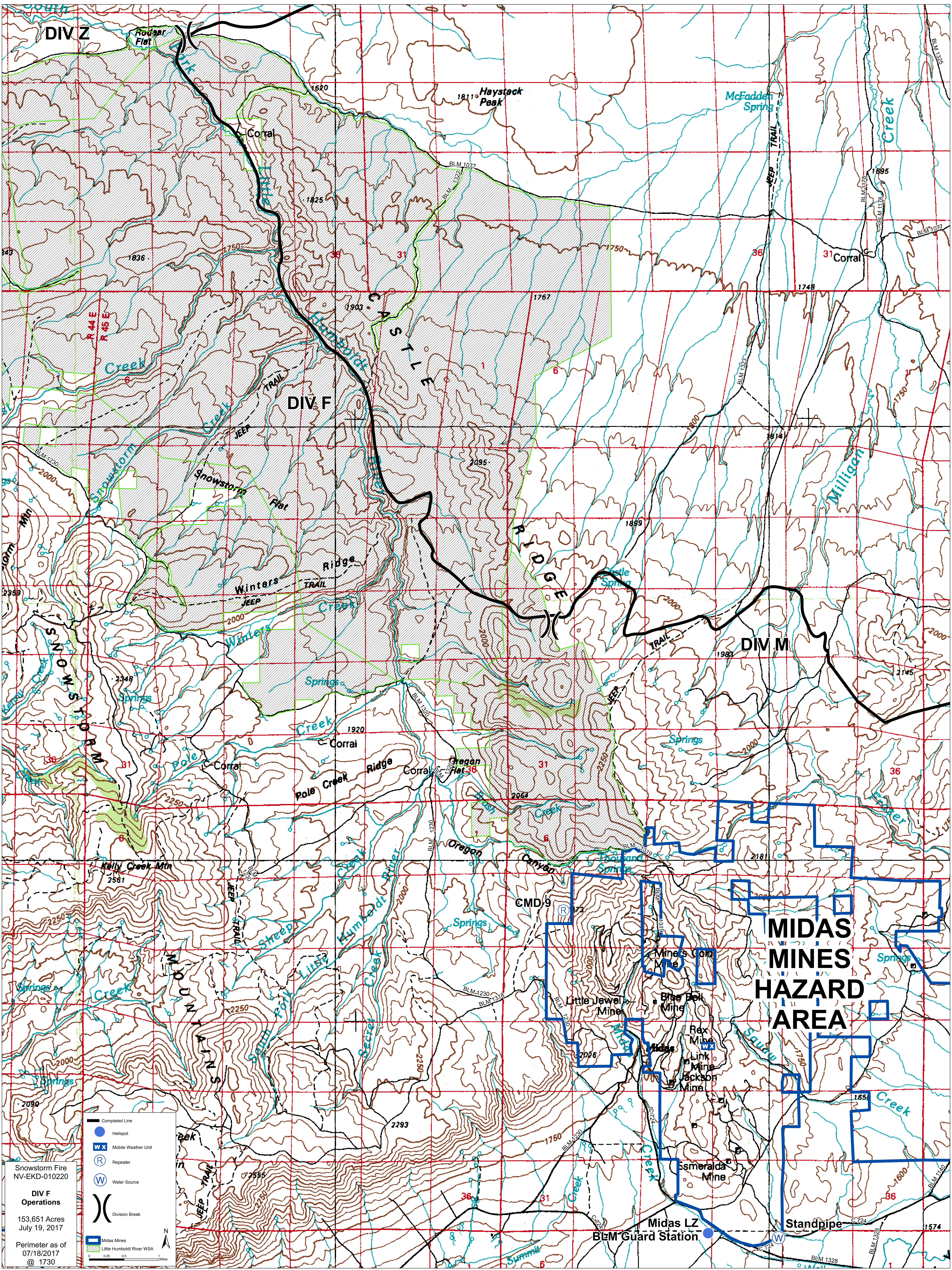
Midas.LZ

Standpipe

Showstorm Fire
 NV-EKD-010220
DIV M
 Operations
 153,651 Acres
 July 19, 2017
 Perimeter as of
 07/18/2017
 @ 1730

- Completed Line
- Completed Doser Line
- Drop Point
- Hotspot
- Mobile Weather Unit
- Repeater
- Water Source
- Division Break
- Midas Mine
- Little Humboldt River WSA

0 0.25 0.5 1 Miles



DIV Z

Haystack Peak

McFadden Spring

Corral

DIV F

CASCADE

RIDGE

DIV M

MIDAS MINES HAZARD AREA

Snowstorm Fire NV-EKD-010220

DIV F Operations
153,651 Acres
July 19, 2017

Perimeter as of 07/18/2017 @ 1730

- Completed Line
- Helipoint
- Mobile Weather Unit
- Repeater
- Water Source
- Division Break
- Midas Mines
- Little Humboldt River WSA



N

0 0.25 0.5 Miles