

| Point Feature         | Name           | Lat           | Long           | Travel Time     |
|-----------------------|----------------|---------------|----------------|-----------------|
| Camp                  | IL Ranch Spike | N 41° 34.050' | W 116° 24.200' | 2.5 hrs. to ICP |
| Camp                  | Midas Spike    | N 41° 8.285'  | W 117° 2.762'  | 1.5 hrs. to ICP |
| Drop Point            | DP - 1         | N 41° 25.423' | W 116° 39.035' |                 |
| Drop Point            | DP - 5         | N 41° 18.597' | W 116° 40.003' |                 |
| Drop Point            | DP - 9         | N 40° 54.294' | W 116° 53.866' |                 |
| Drop Point            | DP - 61        | N 41° 33.300' | W 116° 27.780' |                 |
| Drop Point            | DP - 65        | N 41° 28.818' | W 116° 33.070' |                 |
| Helibase              |                | N 40° 44.585' | W 116° 31.271' |                 |
| Helispot              |                | N 40° 36.434' | W 116° 52.392' |                 |
| Helispot              | Midas LZ       | N 41° 12.346' | W 116° 46.749' |                 |
| Incident Command Post |                | N 40° 38.190' | W 116° 56.268' |                 |
| Mobile Weather        |                | N 41° 14.676' | W 116° 46.740' |                 |
| Water Source          | Dip - 1        | N 41° 8.289'  | W 117° 2.762'  |                 |
| Water Source          | Dip - 5        | N 41° 32.63'  | W 116° 38.0'   |                 |
| Water Source          | Dip - 7        | N 41° 32.63'  | W 116° 38.0'   |                 |
| Water Source          | Dip - 8        | N 41° 32.63'  | W 116° 38.0'   |                 |
| Water Source          | Dip - 9        | N 41° 41.50'  | W 116° 24.31'  |                 |
| Water Source          | Dip - 10       | N 41° 31.976' | W 116° 32.890' |                 |
| Water Source          | Dip - 15       | N 41° 12.32'  | W 116° 41.72'  |                 |
| Water Source          | Dip - 20       | N 41° 40.78'  | W 116° 40.37'  |                 |

**Four Seasons Complex**  
 Roosters Comb - 218,380 Acres  
 Snowstorm - 158,135 Acres  
 Cornucopia - 1,559 Acres  
 4 Mile - 292 Acres

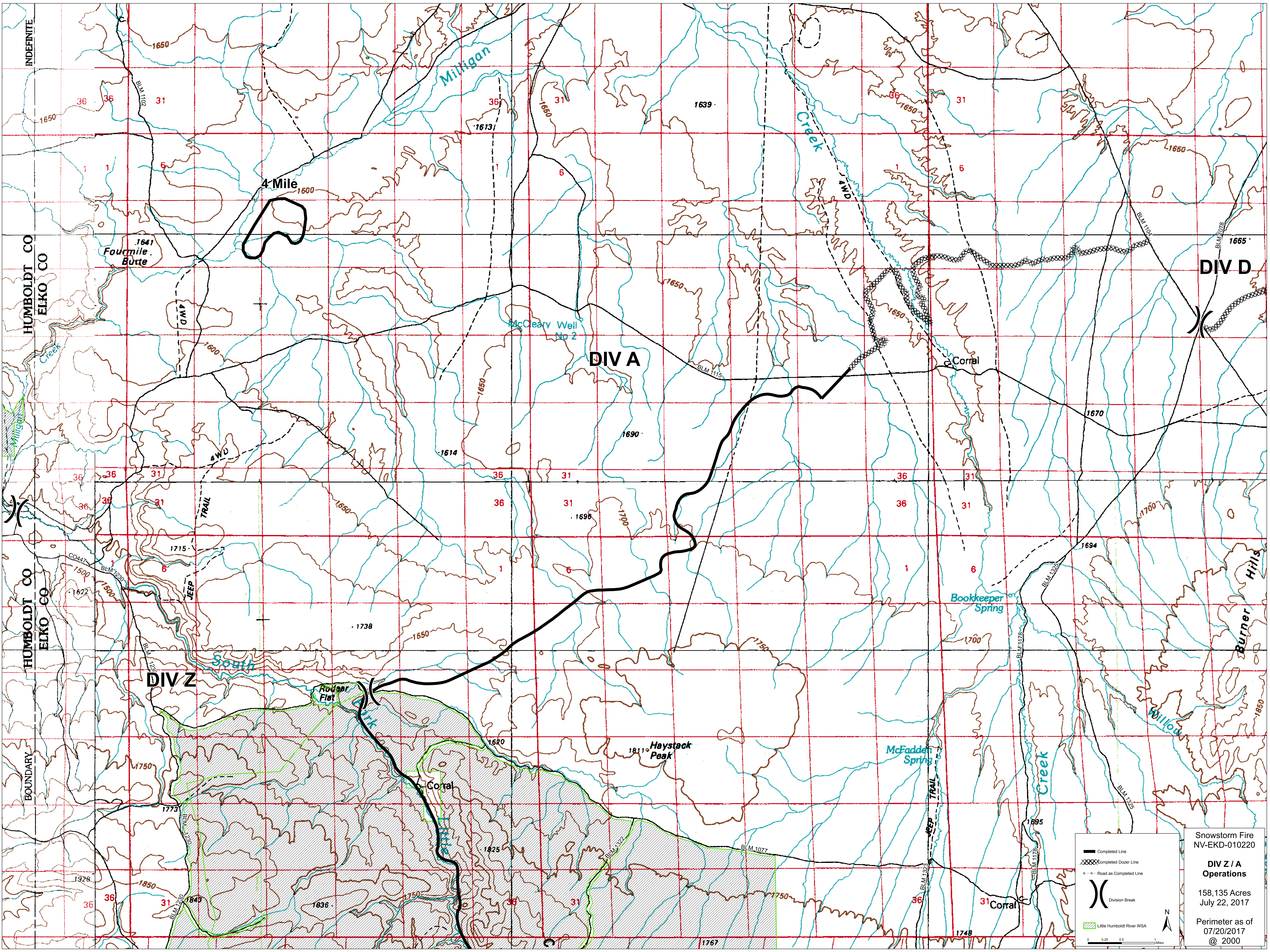
**Vicinity**  
 July 22, 2017  
 Perimeter as of  
 07/20/2017  
 @ 2000

Camp  
 Drop Point  
 Helispot  
 Incident Command Post  
 Mobile Weather Unit  
 Water Source  
 Division Break  
 Fire Polygon

0 2 4 6 8 10 Miles

**ICP**





INDEFINITE

HUMBOLDT CO  
ELKO CO

HUMBOLDT CO  
ELKO CO

BOUNDARY

4 Mile

Fourmile Butte

DIV A

DIV D

DIV Z

Flower Flat

Haystack Peak

Corral

Corral

Bookkeeper Spring

McFadden Spring

Burner Hills

Willow Creek

— Completed Line  
XXXXX Completed Dozer Line  
R - R - Road as Completed Line  
) Division Break  
Little Humboldt River WSA

0 0.25 0.5 1 Miles

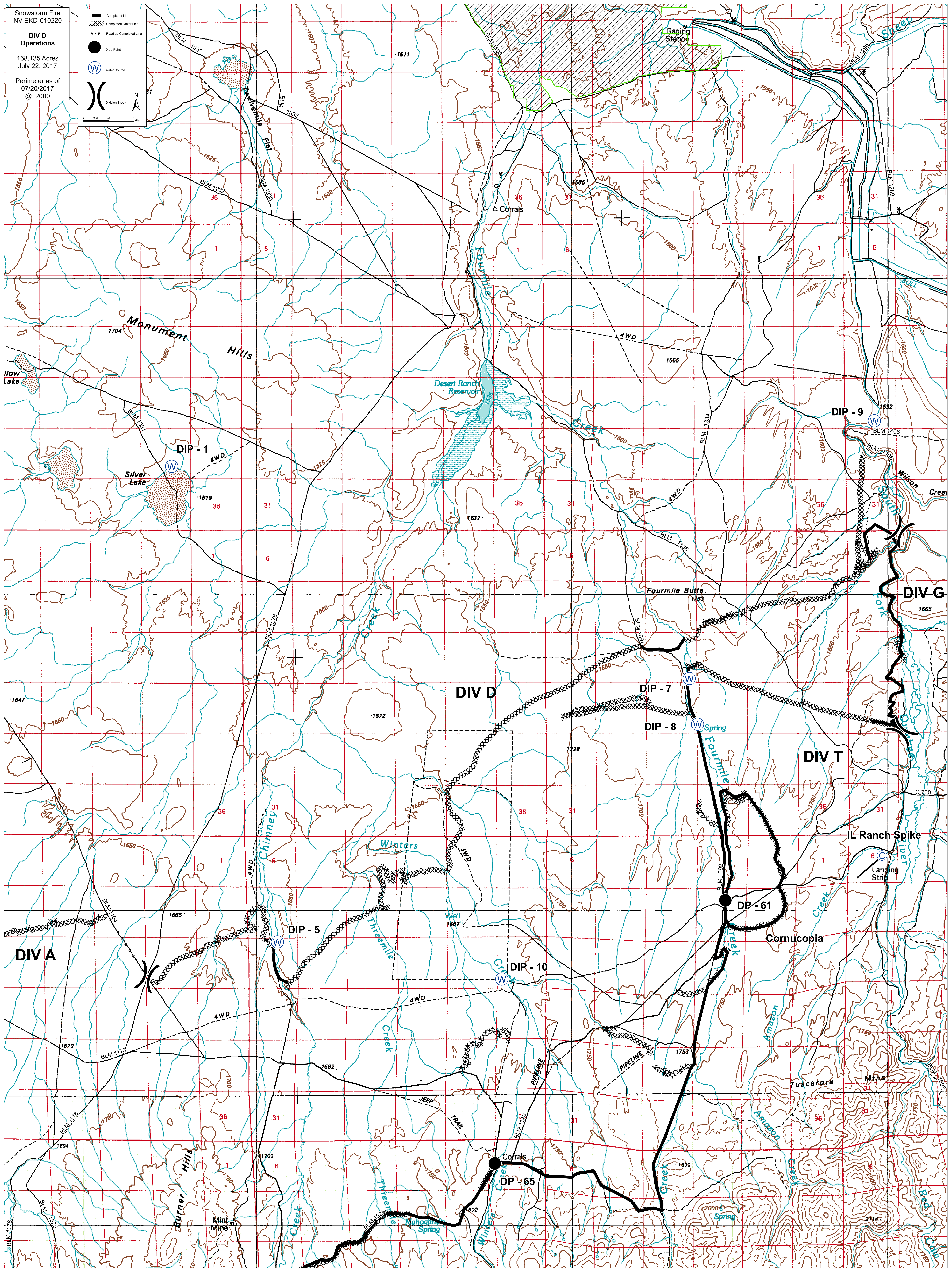
Snowstorm Fire  
NV-EKD-010220  
**DIV Z / A  
Operations**  
158,135 Acres  
July 22, 2017  
Perimeter as of  
07/20/2017  
© 2000



Snowstorm Fire  
NV-EKD-010220

**DIV D Operations**  
158,135 Acres  
July 22, 2017  
Perimeter as of  
07/20/2017  
© 2000

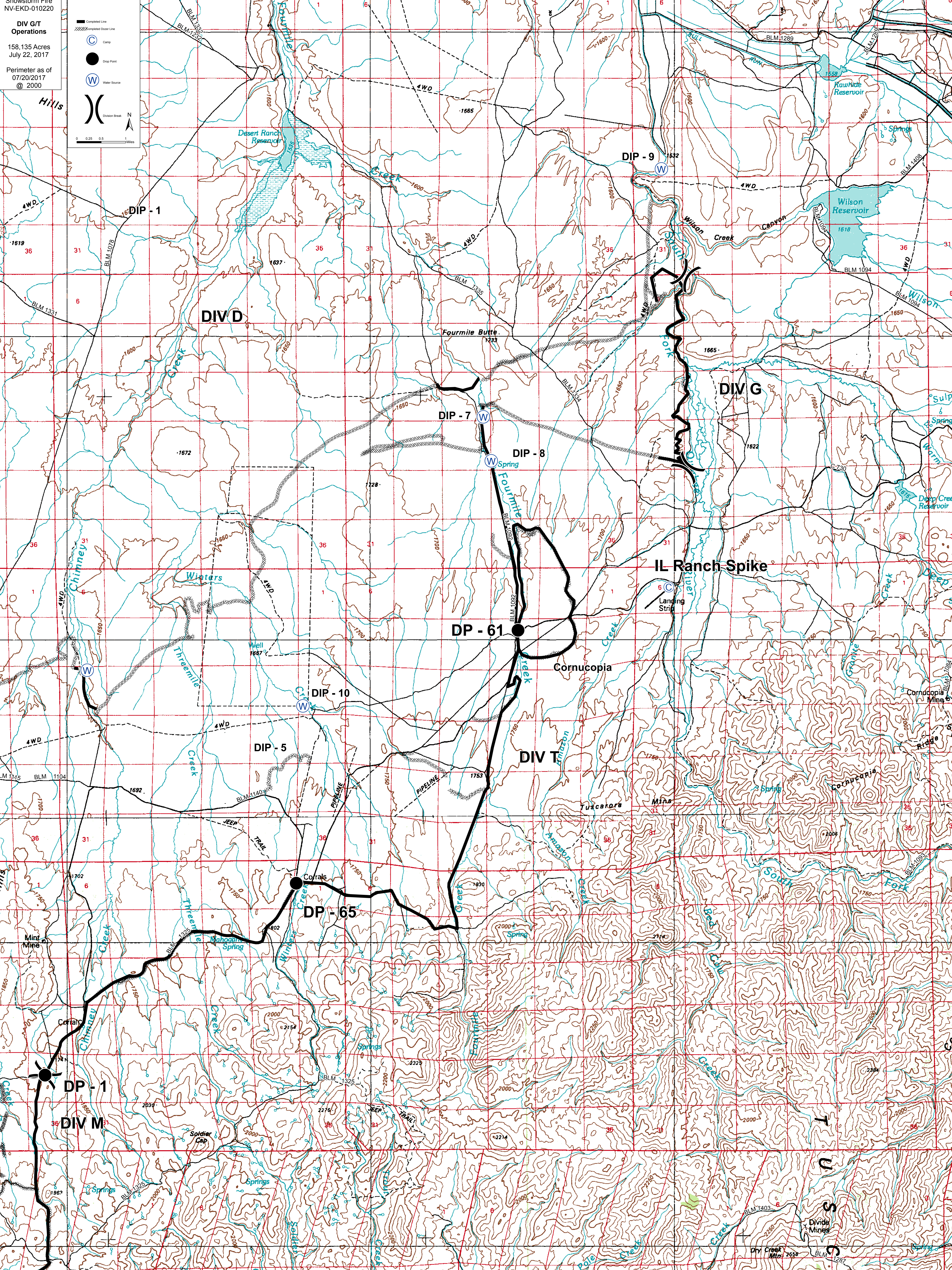
- Completed Line
- Completed Dozer Line
- R - R Road as Completed Line
- Drop Point
- Water Source
- Division Break





Snowstorm Fire  
NV-EKD-010220  
**DIV G/T  
Operations**  
158,135 Acres  
July 22, 2017  
Perimeter as of  
07/20/2017  
@ 2000

Completed Line  
Completed Doser Line  
Camp  
Drop Point  
Water Source  
Division Break

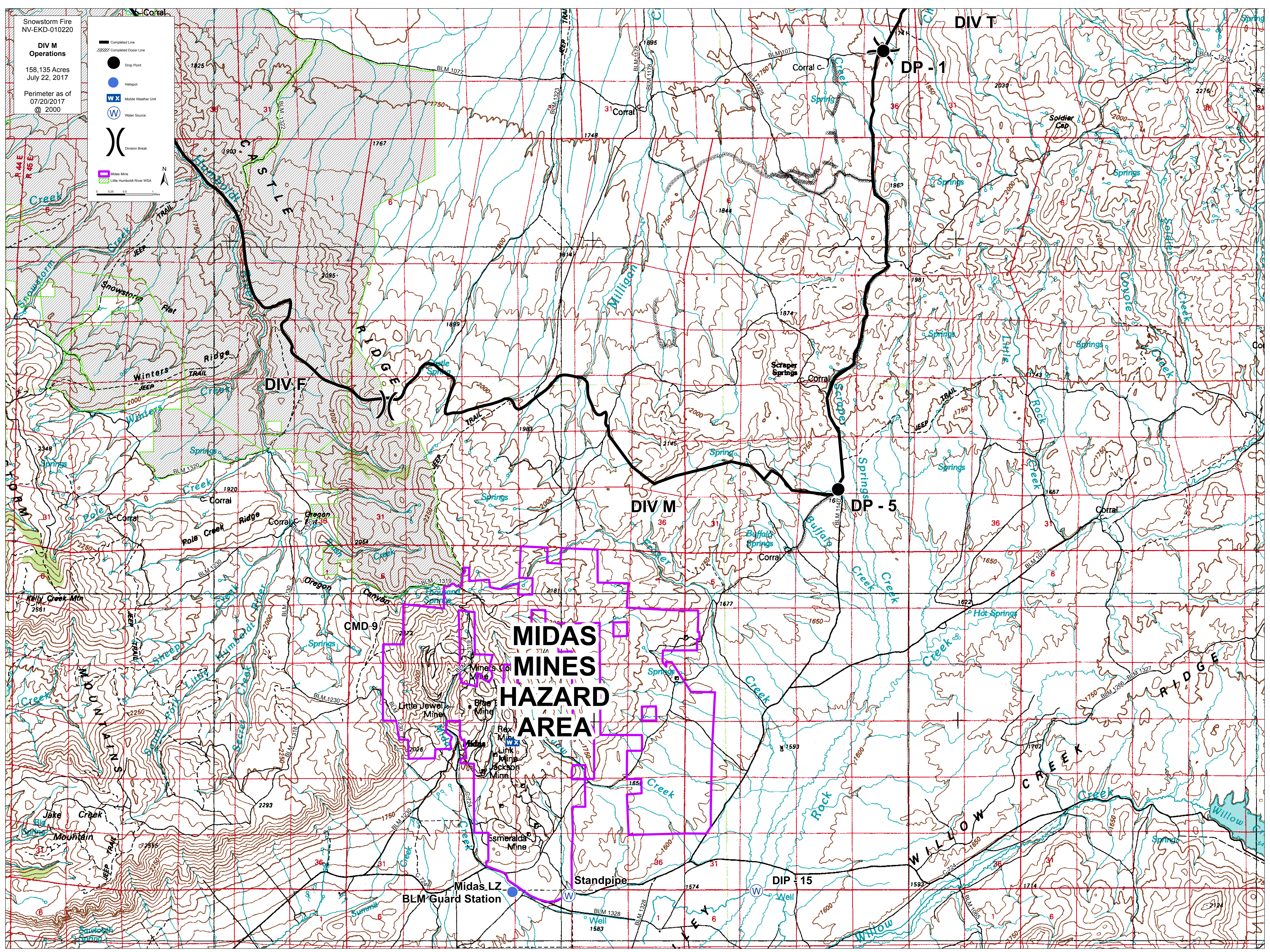




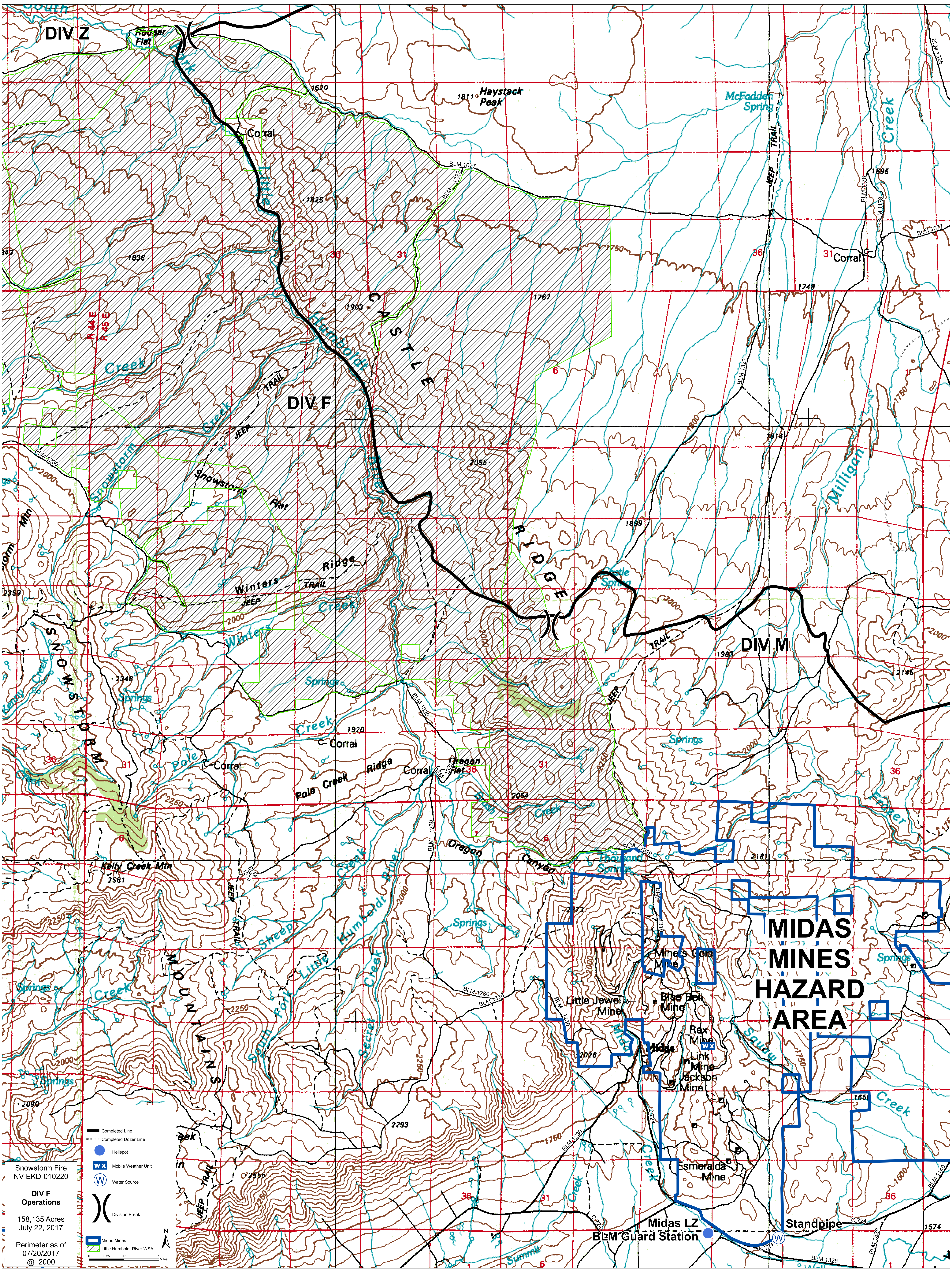
**Showstorm Fire**  
 NV-EKD-010220  
**DIV M**  
**Operations**  
 158,135 Acres  
 July 22, 2017  
 Perimeter as of  
 07/20/2017  
 @ 2000

- Completed Line
- Completed Dozer Line
- Drop Point
- Helipoint
- Mobile Weather Unit
- Water Source
- Division Break
- Midas Mine
- Little Humboldt River WSA

0 0.25 0.5 1 Miles







DIV Z

Haystack Peak

Corral

Haystack Peak

McFadden Spring

Creek

DIV F

CASCADE

RIDGE

DIV M

Milligan Creek

Creek

Snowstorm

Winters

Winters

Pole

Corral

Corral

Oregon

Creek

Oregon

Canyon

Thousand Springs

Kelly Creek Mtn

2581

WILSONS

Sheep

Humboldt

Creek

Springs

Little Jewel Mine

Blue Bell Mine

Rex Mine

Link Mine

Jackson Mine

Midas

Emeralda Mine

Midas LZ

BLM Guard Station

Standpipe

MIDAS MINES HAZARD AREA

Snowstorm Fire  
NV-EKD-010220

DIV F  
Operations

158,135 Acres  
July 22, 2017

Perimeter as of  
07/20/2017  
@ 2000

- Completed Line
- Completed Dozer Line
- Helispot
- Mobile Weather Unit
- Water Source
- Division Break
- Midas Mines
- Little Humboldt River WSA

