

115°30'0"W

115°20'0"W

115°10'0"W

115°0'0"W

Operations Map

Highline Fire ID-PAF- 000159
IR Flown August 18, @ 0229 Hours
GIS Acres 11,483

NAD 1983 UTM Zone 11N
Published by M. Tari
August 18, 2017 1200 HOURS

45°30'0"N

45°20'0"N

45°10'0"N

45°0'0"N

44°50'0"N

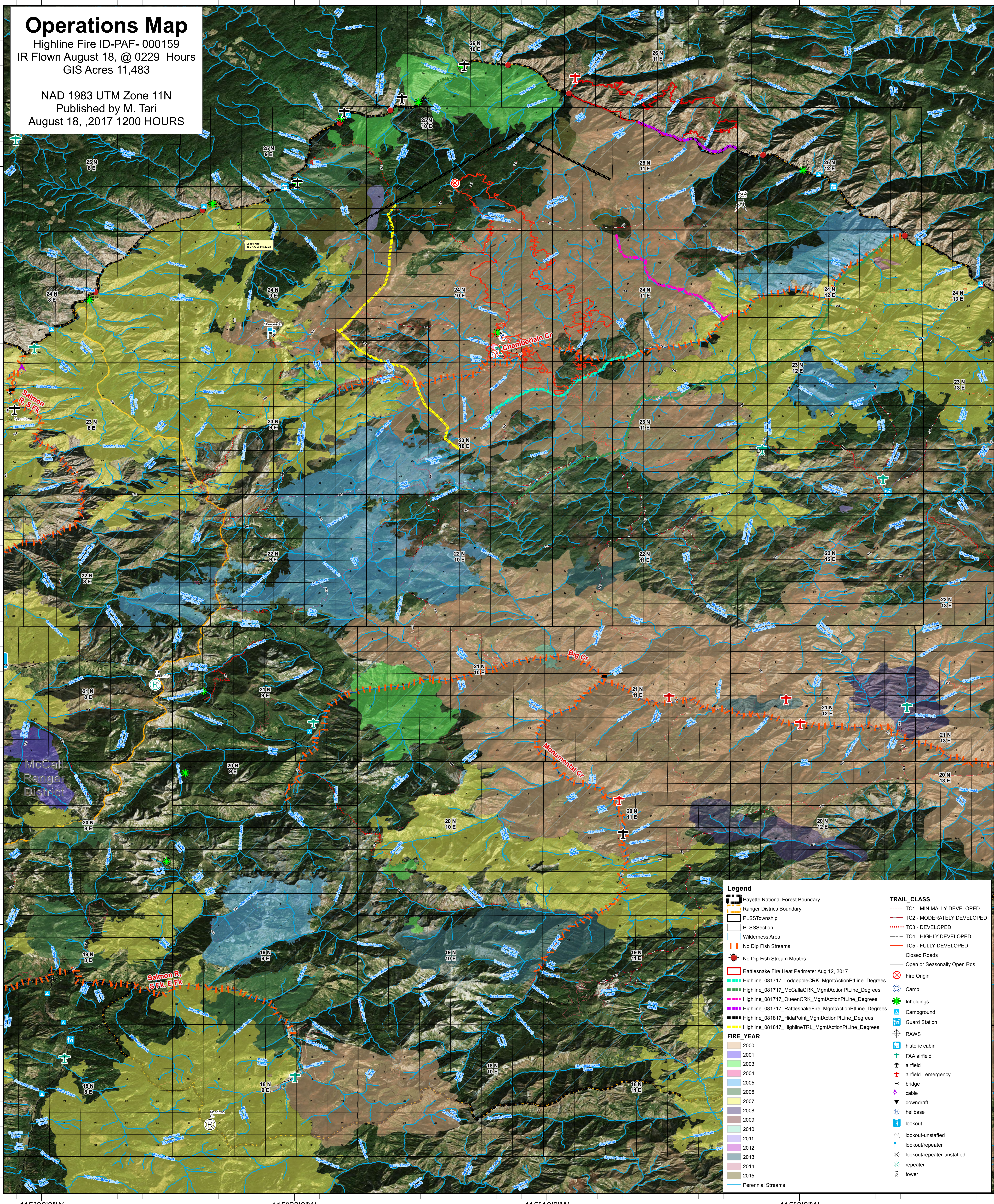
45°30'0"N

45°20'0"N

45°10'0"N

45°0'0"N

44°50'0"N



Legend

- Payette National Forest Boundary
- Ranger Districts Boundary
- PLSS Township
- PLSS Section
- Wilderness Area
- No Dip Fish Streams
- No Dip Fish Stream Mouths
- Rattlesnake Fire Heat Perimeter Aug 12, 2017
- Highline_081717_LodgepoleCRK_MgmtActionPTLine_Degrees
- Highline_081717_McCallaCRK_MgmtActionPTLine_Degrees
- Highline_081717_QueenCRK_MgmtActionPTLine_Degrees
- Highline_081717_RattlesnakeFire_MgmtActionPTLine_Degrees
- Highline_081817_HidaPoint_MgmtActionPTLine_Degrees
- Highline_081817_HighlineTRL_MgmtActionPTLine_Degrees
- Perennial Streams

TRAIL_CLASS

- TC1 - MINIMALLY DEVELOPED
- TC2 - MODERATELY DEVELOPED
- TC3 - DEVELOPED
- TC4 - HIGHLY DEVELOPED
- TC5 - FULLY DEVELOPED
- Closed Roads
- Open or Seasonally Open Rds.

FIRE_YEAR

- 2000
- 2001
- 2003
- 2004
- 2005
- 2006
- 2007
- 2008
- 2009
- 2010
- 2011
- 2012
- 2013
- 2014
- 2015

Other Symbols:

- Fire Origin
- Camp
- Inholdings
- Campground
- Guard Station
- RAWS
- historic cabin
- FAA airfield
- airfield
- airfield - emergency
- bridge
- cable
- downdraft
- helibase
- lookout
- lookout-unstaffed
- lookout/repeater
- lookout/repeater-unstaffed
- repeater
- tower

