

115°30'0"W 115°20'0"W 115°10'0"W 115°0'0"W

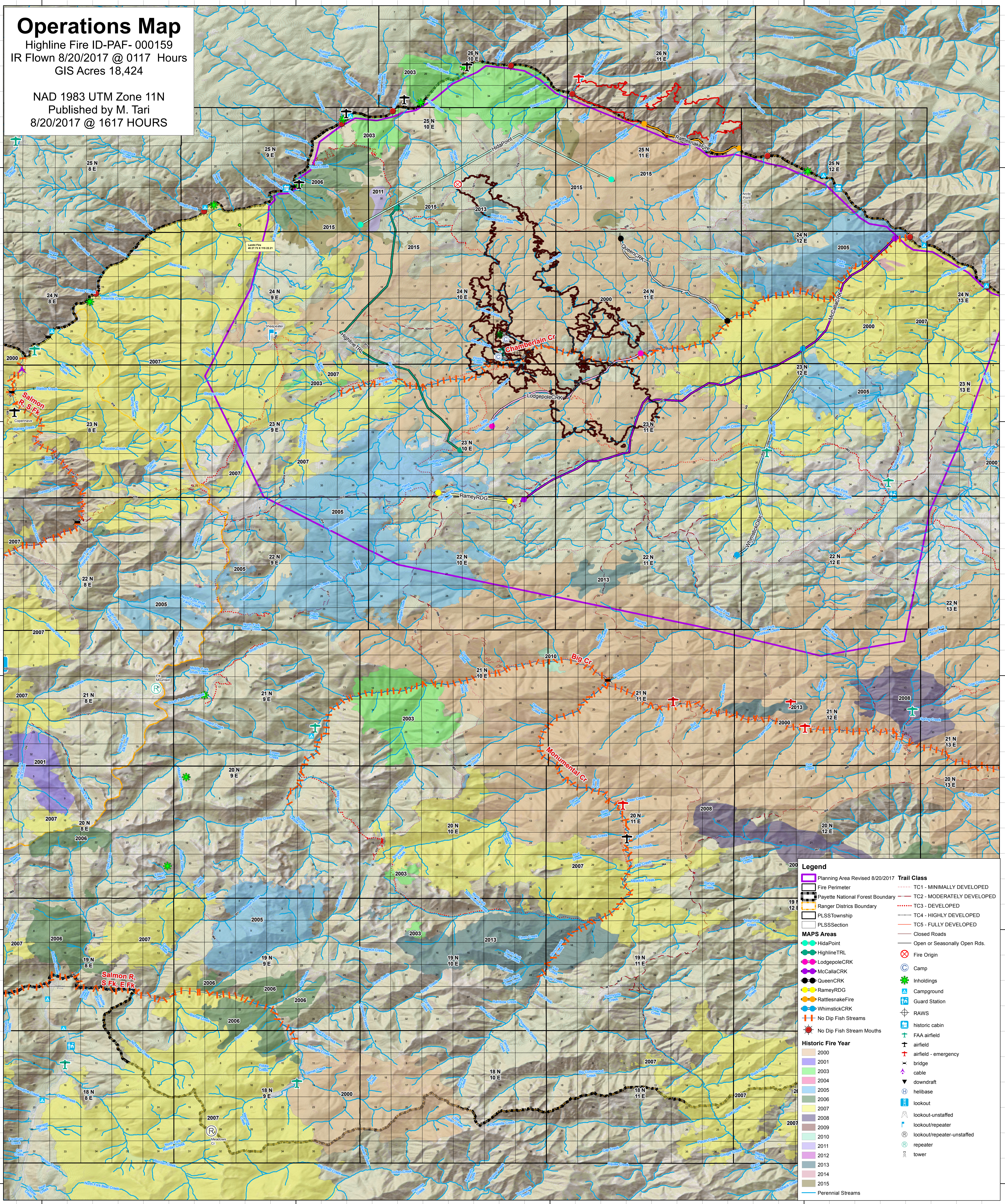
Operations Map

Highline Fire ID-PAF- 000159
IR Flown 8/20/2017 @ 0117 Hours
GIS Acres 18,424

NAD 1983 UTM Zone 11N
Published by M. Tari
8/20/2017 @ 1617 HOURS

45°30'0"N
45°20'0"N
45°10'0"N
45°0'0"N
44°50'0"N

45°30'0"N
45°20'0"N
45°10'0"N
45°0'0"N
44°50'0"N



Legend

- Planning Area Revised 8/20/2017
- Fire Perimeter
- Payette National Forest Boundary
- Ranger Districts Boundary
- PLSS Township
- PLSS Section
- HidaPoint
- HighlineTRL
- LodgepoleCRK
- McCallaCRK
- QueenCRK
- RameyRDG
- RattlesnakeFire
- WhimstickCRK
- No Dip Fish Streams
- No Dip Fish Stream Mouths
- Trail Class
- TC1 - MINIMALLY DEVELOPED
- TC2 - MODERATELY DEVELOPED
- TC3 - DEVELOPED
- TC4 - HIGHLY DEVELOPED
- TC5 - FULLY DEVELOPED
- Closed Roads
- Open or Seasonally Open Rds.
- Fire Origin
- Camp
- Inholdings
- Campground
- Guard Station
- RAWS
- historic cabin
- FAA airfield
- airfield
- airfield - emergency
- bridge
- downdraft
- helibase
- lookout
- lookout-unstaffed
- lookout/repeater
- lookout/repeater-unstaffed
- repeater
- tower

Historic Fire Year

- 2000
- 2001
- 2003
- 2004
- 2005
- 2006
- 2007
- 2008
- 2009
- 2010
- 2011
- 2012
- 2013
- 2014
- 2015
- Perennial Streams

