

GOAT FIRE ID-PAF-000204 FSPRO 14 DAY ANALYSIS AUGUST 25, 2017

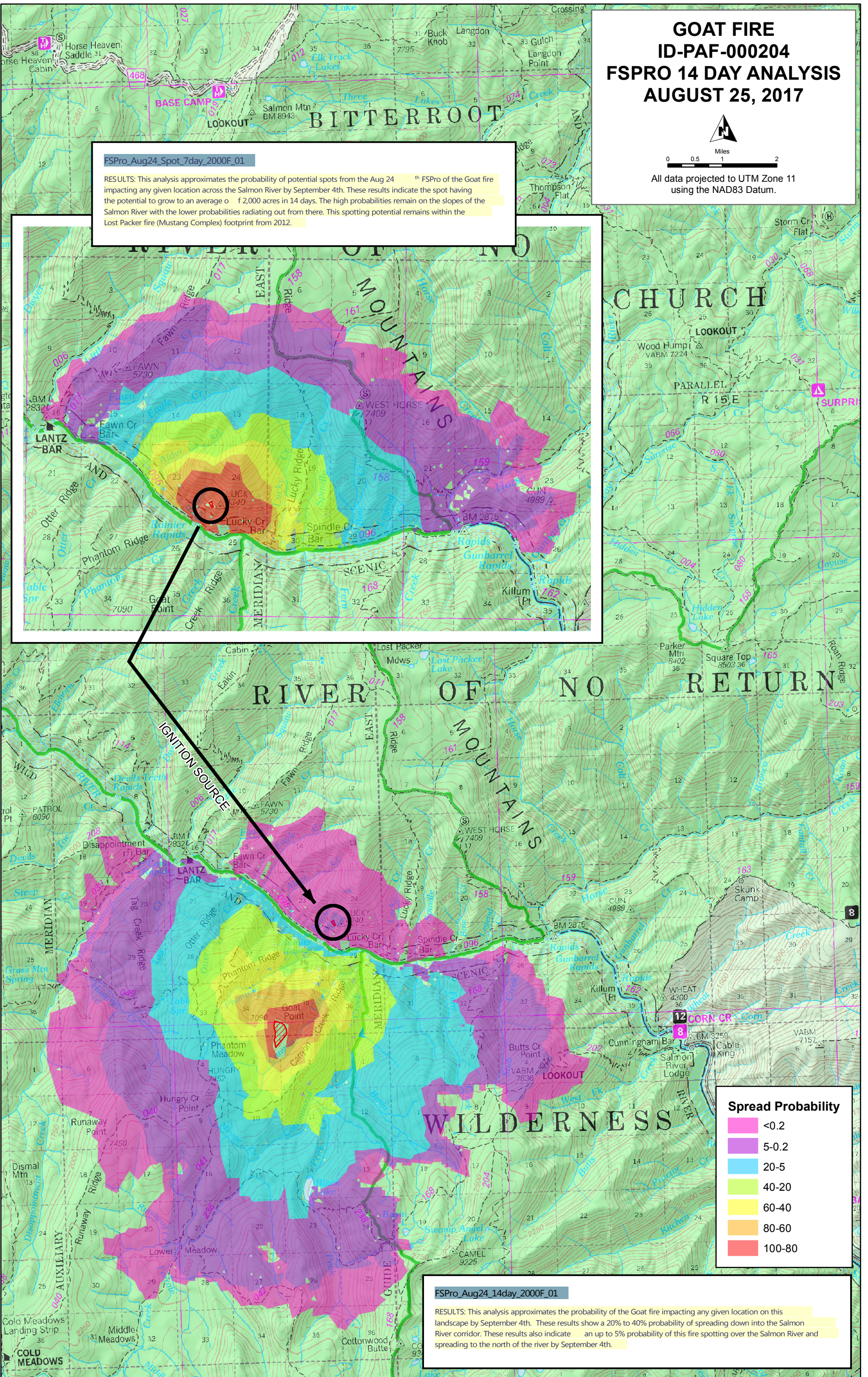


0 0.5 1 2
Miles

All data projected to UTM Zone 11
using the NAD83 Datum.

FSPro_Aug24_Spot_7day_2000F_01

RESULTS: This analysis approximates the probability of potential spots from the Aug 24th FSPro of the Goat fire impacting any given location across the Salmon River by September 4th. These results indicate the spot having the potential to grow to an average of 2,000 acres in 14 days. The high probabilities remain on the slopes of the Salmon River with the lower probabilities radiating out from there. This spotting potential remains within the Lost Packer fire (Mustang Complex) footprint from 2012.



Spread Probability

- <0.2
- 5-0.2
- 20-5
- 40-20
- 60-40
- 80-60
- 100-80

FSPro_Aug24_14day_2000F_01

RESULTS: This analysis approximates the probability of the Goat fire impacting any given location on this landscape by September 4th. These results show a 20% to 40% probability of spreading down into the Salmon River corridor. These results also indicate an up to 5% probability of this fire spotting over the Salmon River and spreading to the north of the river by September 4th.