
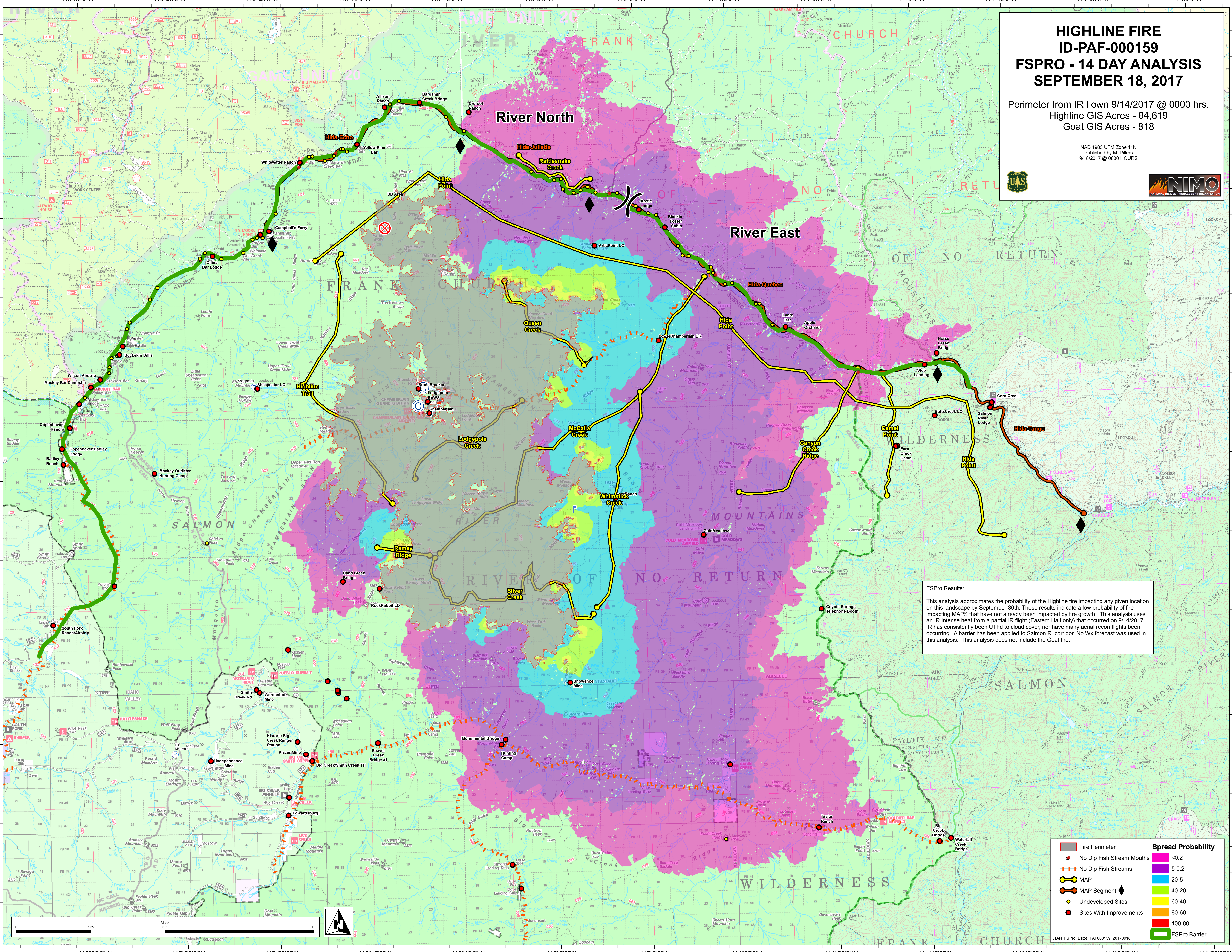


# HIGHLINE FIRE ID-PAF-000159 FSPRO - 14 DAY ANALYSIS SEPTEMBER 18, 2017

Perimeter from IR flown 9/14/2017 @ 0000 hrs.  
Highline GIS Acres - 84,619  
Goat GIS Acres - 818

NAD 1983 UTM Zone 11N  
Published by M. Pillers  
9/18/2017 @ 0830 HOURS

**FSPro Results:**

This analysis approximates the probability of the Highline fire impacting any given location on this landscape by September 30th. These results indicate a low probability of fire impacting MAPS that have not already been impacted by fire growth. This analysis uses an IR Intense heat from a partial IR flight (Eastern Half only) that occurred on 9/14/2017. IR has consistently been UTF'd to cloud cover, nor have many aerial recon flights been occurring. A barrier has been applied to Salmon R. corridor. No Wx forecast was used in this analysis. This analysis does not include the Goat fire.

Fire Perimeter		Spread Probability	
	Fire Perimeter		<0.2
	No Dip Fish Stream Mouths		5-0.2
	No Dip Fish Streams		20-5
	MAP Segment		40-20
	Undeveloped Sites		60-40
	Sites With Improvements		80-60
	FSPro Barrier		100-80

LTAN\_FSPPro\_Elsize\_PAF000159\_20170918

