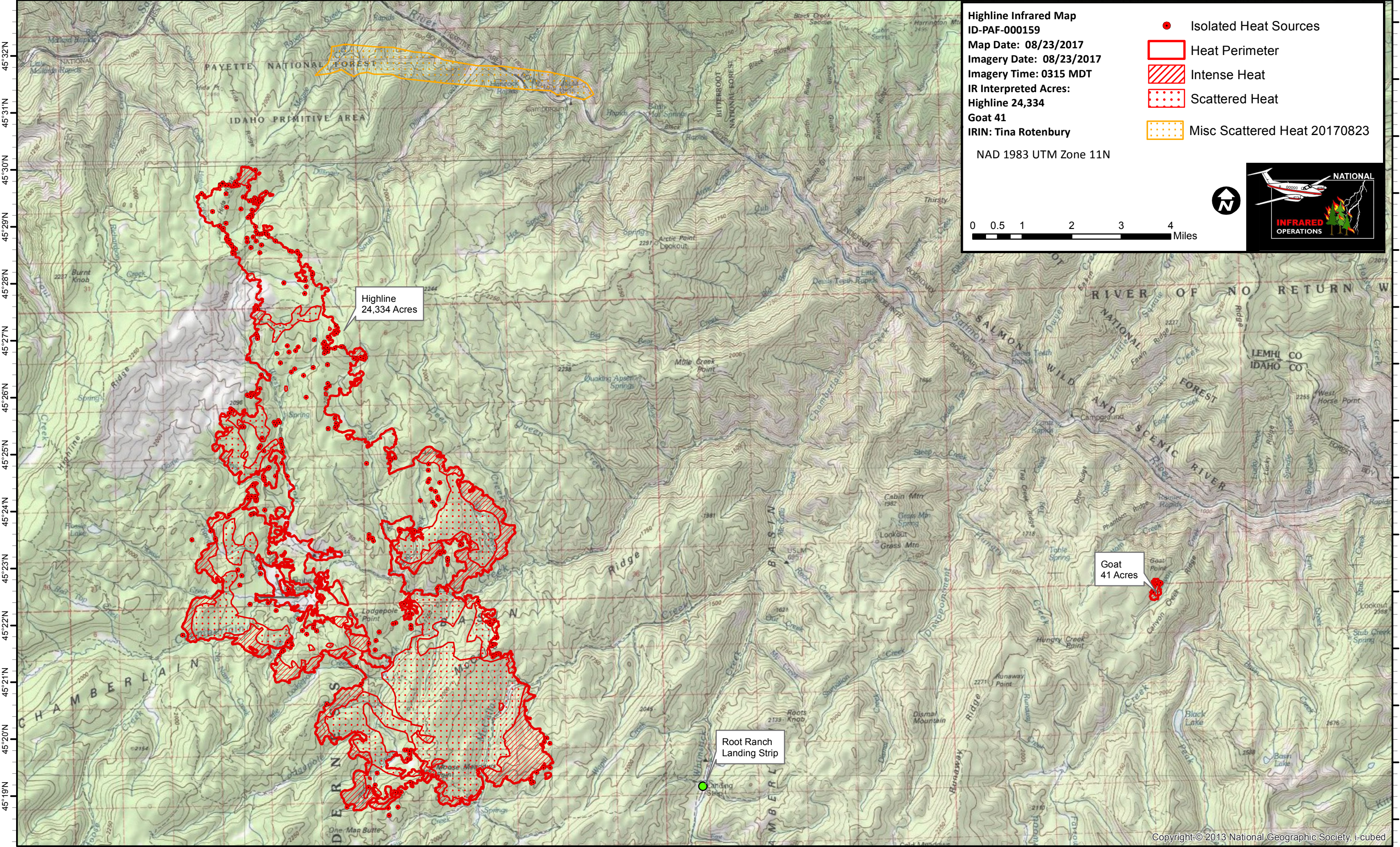
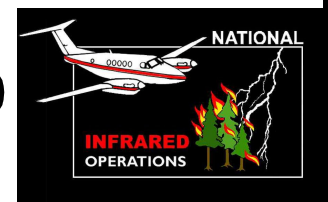
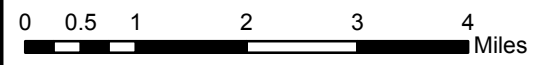


115°18'W 115°17'W 115°16'W 115°15'W 115°14'W 115°13'W 115°12'W 115°11'W 115°10'W 115°9'W 115°8'W 115°7'W 115°6'W 115°5'W 115°4'W 115°3'W 115°2'W 115°1'W 115°0'W 114°59'W 114°58'W 114°57'W 114°56'W 114°55'W 114°54'W 114°53'W 114°52'W 114°51'W 114°50'W 114°49'W 114°48'W 114°47'W 114°46'W 114°45'W 114°44'W



**Highline Infrared Map**  
ID-PAF-000159  
Map Date: 08/23/2017  
Imagery Date: 08/23/2017  
Imagery Time: 0315 MDT  
IR Interpreted Acres:  
**Highline 24,334**  
**Goat 41**  
IRIN: Tina Rotenbury  
NAD 1983 UTM Zone 11N

- Isolated Heat Sources
- Heat Perimeter
- Intense Heat
- Scattered Heat
- Misc Scattered Heat 20170823



Highline  
24,334 Acres

Goat  
41 Acres

Root Ranch  
Landing Strip

115°18'W 115°17'W 115°16'W 115°15'W 115°14'W 115°13'W 115°12'W 115°11'W 115°10'W 115°9'W 115°8'W 115°7'W 115°6'W 115°5'W 115°4'W 115°3'W 115°2'W 115°1'W 115°0'W 114°59'W 114°58'W 114°57'W 114°56'W 114°55'W 114°54'W 114°53'W 114°52'W 114°51'W 114°50'W 114°49'W 114°48'W 114°47'W 114°46'W 114°45'W 114°44'W