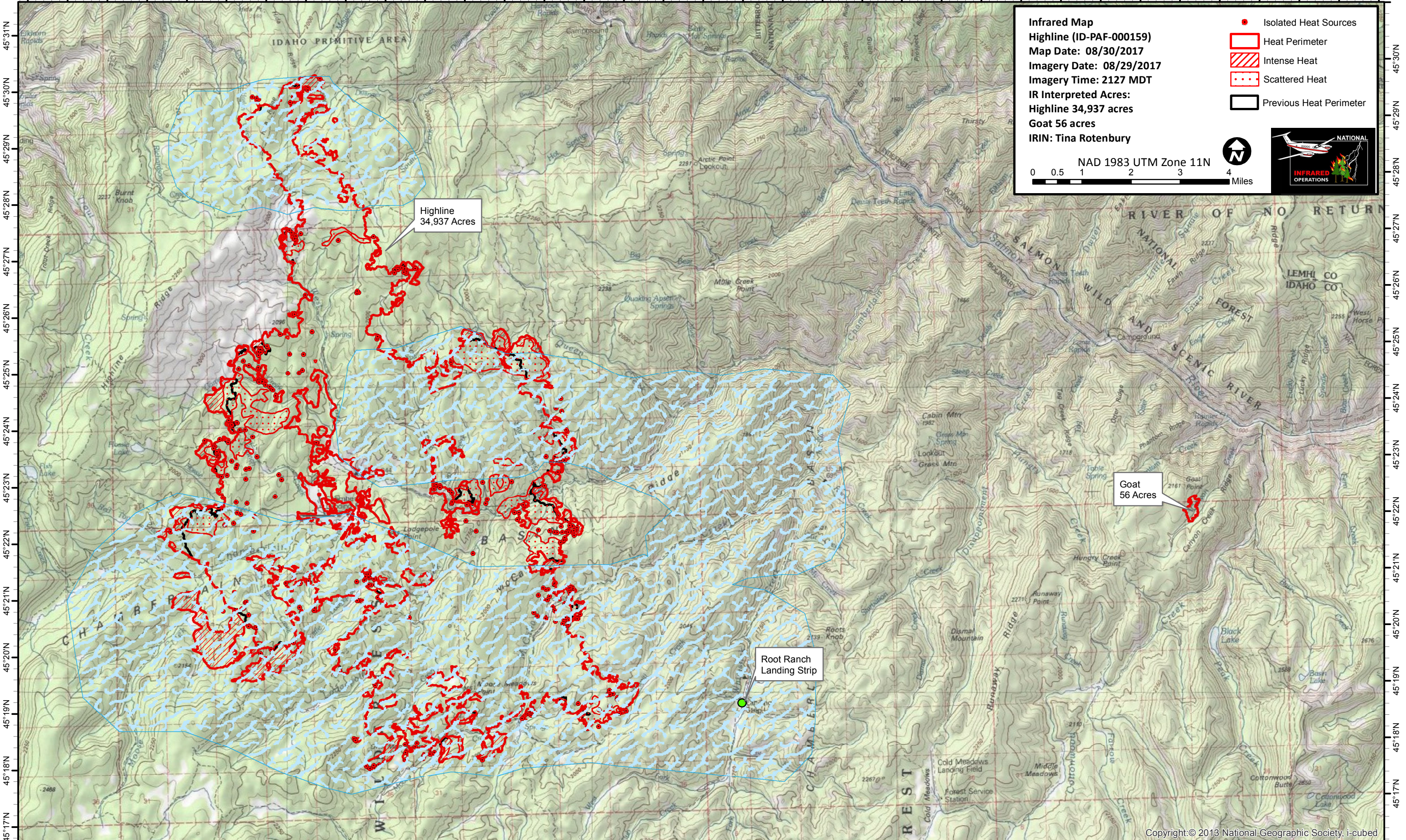


115°19'W 115°18'W 115°17'W 115°16'W 115°15'W 115°14'W 115°13'W 115°12'W 115°11'W 115°10'W 115°9'W 115°8'W 115°7'W 115°6'W 115°5'W 115°4'W 115°3'W 115°2'W 115°1'W 115°0'W 114°59'W 114°58'W 114°57'W 114°56'W 114°55'W 114°54'W 114°53'W 114°52'W 114°51'W 114°50'W 114°49'W 114°48'W 114°47'W 114°46'W 114°45'W



**Infrared Map**  
**Highline (ID-PAF-000159)**  
**Map Date: 08/30/2017**  
**Imagery Date: 08/29/2017**  
**Imagery Time: 2127 MDT**  
**IR Interpreted Acres:**  
**Highline 34,937 acres**  
**Goat 56 acres**  
**IRIN: Tina Rotenbury**

- Isolated Heat Sources
- Heat Perimeter
- Intense Heat
- Scattered Heat
- Previous Heat Perimeter

NAD 1983 UTM Zone 11N  
 0 0.5 1 2 3 4 Miles

Highline  
34,937 Acres

Goat  
56 Acres

Root Ranch  
Landing Strip

115°19'W 115°18'W 115°17'W 115°16'W 115°15'W 115°14'W 115°13'W 115°12'W 115°11'W 115°10'W 115°9'W 115°8'W 115°7'W 115°6'W 115°5'W 115°4'W 115°3'W 115°2'W 115°1'W 115°0'W 114°59'W 114°58'W 114°57'W 114°56'W 114°55'W 114°54'W 114°53'W 114°52'W 114°51'W 114°50'W 114°49'W 114°48'W 114°47'W 114°46'W