

114°42'W

114°41'W

44°36'N

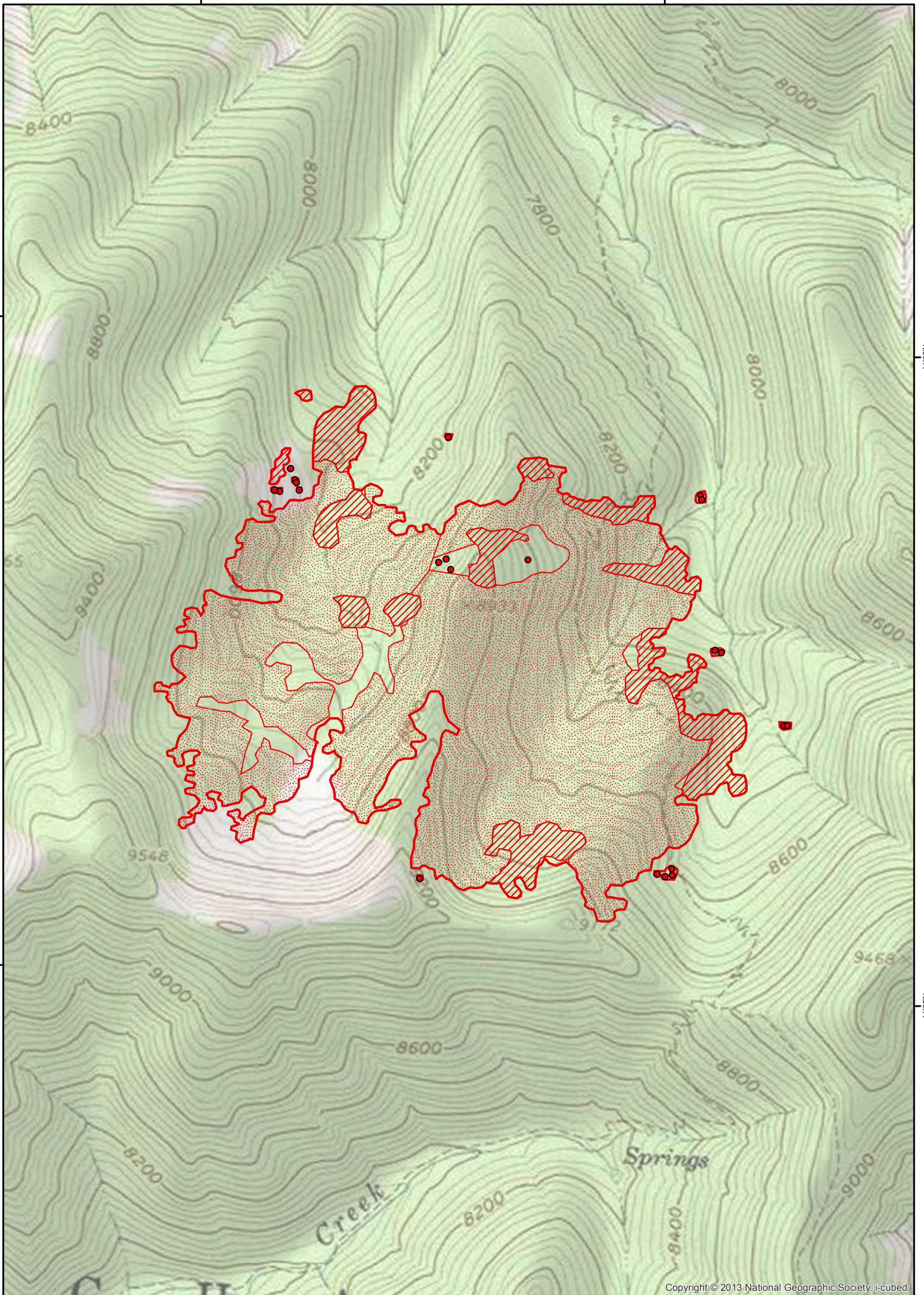
44°36'N

44°35'N





44°35'N

114°42'W

114°41'W



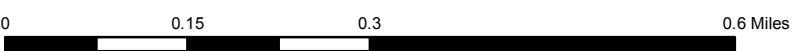
Copyright:© 2013 National Geographic Society, i-cubed

-  Heat Perimeter
-  Intense Heat Areas
-  Scattered Heat Areas
-  Isolated Heat Sources

NAD 1983 UTM Zone 12N



Ibx
 ID-SCF-017139
 Infrared Heat Sources
 1:10,000



IR Interpreter: Brian Monroe
 IR interpreted acres: 343
 Date:07/27/2017
 Time received the Image: 2155 hrs