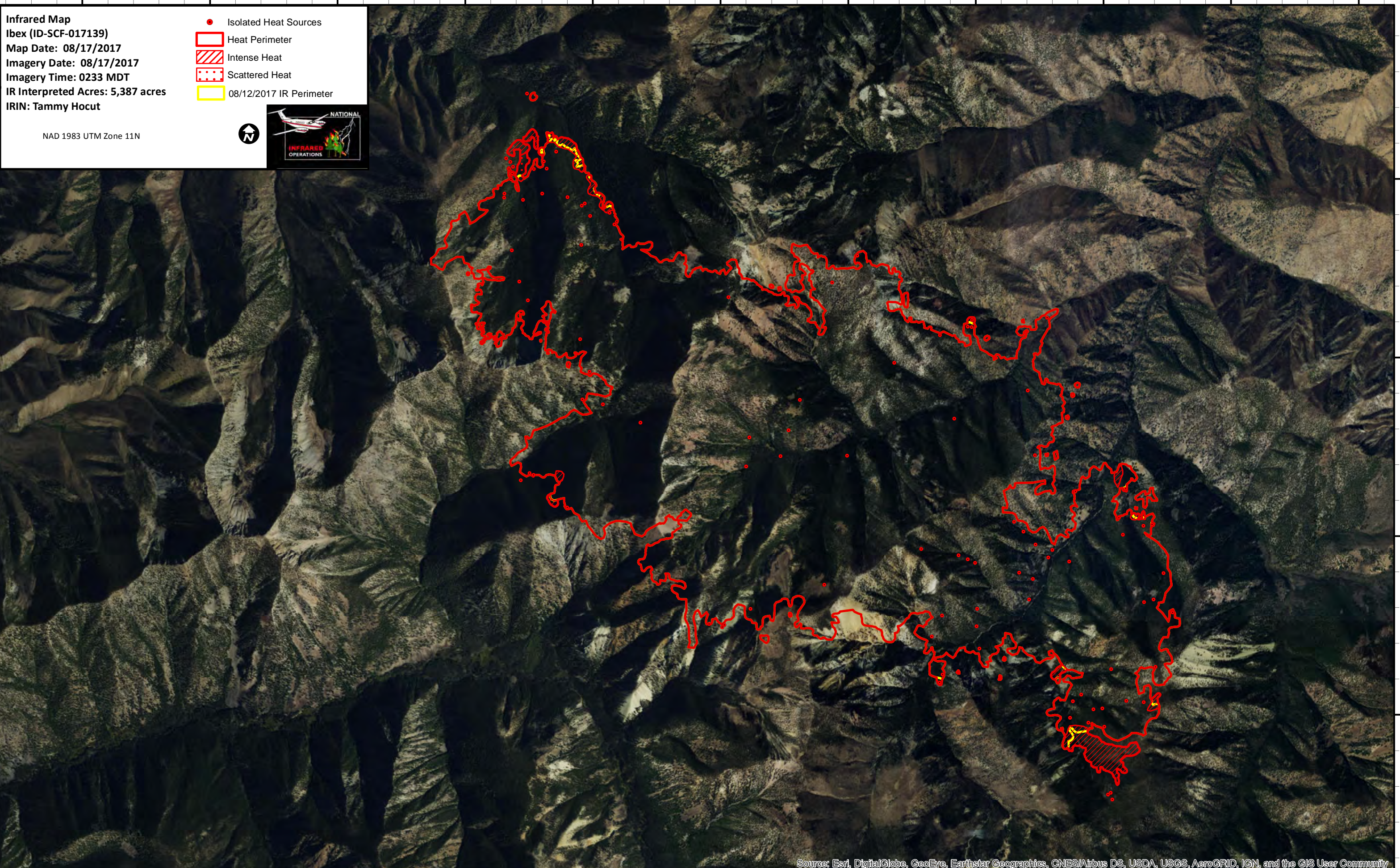



114°45'W 114°44'W 114°43'W 114°42'W 114°41'W 114°40'W 114°39'W 114°38'W 114°37'W 114°36'W 114°35'W

**Infrared Map**  
**ibex (ID-SCF-017139)**  
**Map Date: 08/17/2017**  
**Imagery Date: 08/17/2017**  
**Imagery Time: 0233 MDT**  
**IR Interpreted Acres: 5,387 acres**  
**IRIN: Tammy Hocut**

- Isolated Heat Sources
- ▭ Heat Perimeter
- ▨ Intense Heat
- ⋯ Scattered Heat
- ▭ 08/12/2017 IR Perimeter

NAD 1983 UTM Zone 11N



44°37'N  
44°36'N  
44°35'N  
44°34'N  
44°33'N

44°36'N  
44°35'N  
44°34'N  
44°33'N

114°45'W 114°44'W 114°43'W 114°42'W 114°41'W 114°40'W 114°39'W 114°38'W 114°37'W 114°36'W 114°35'W