
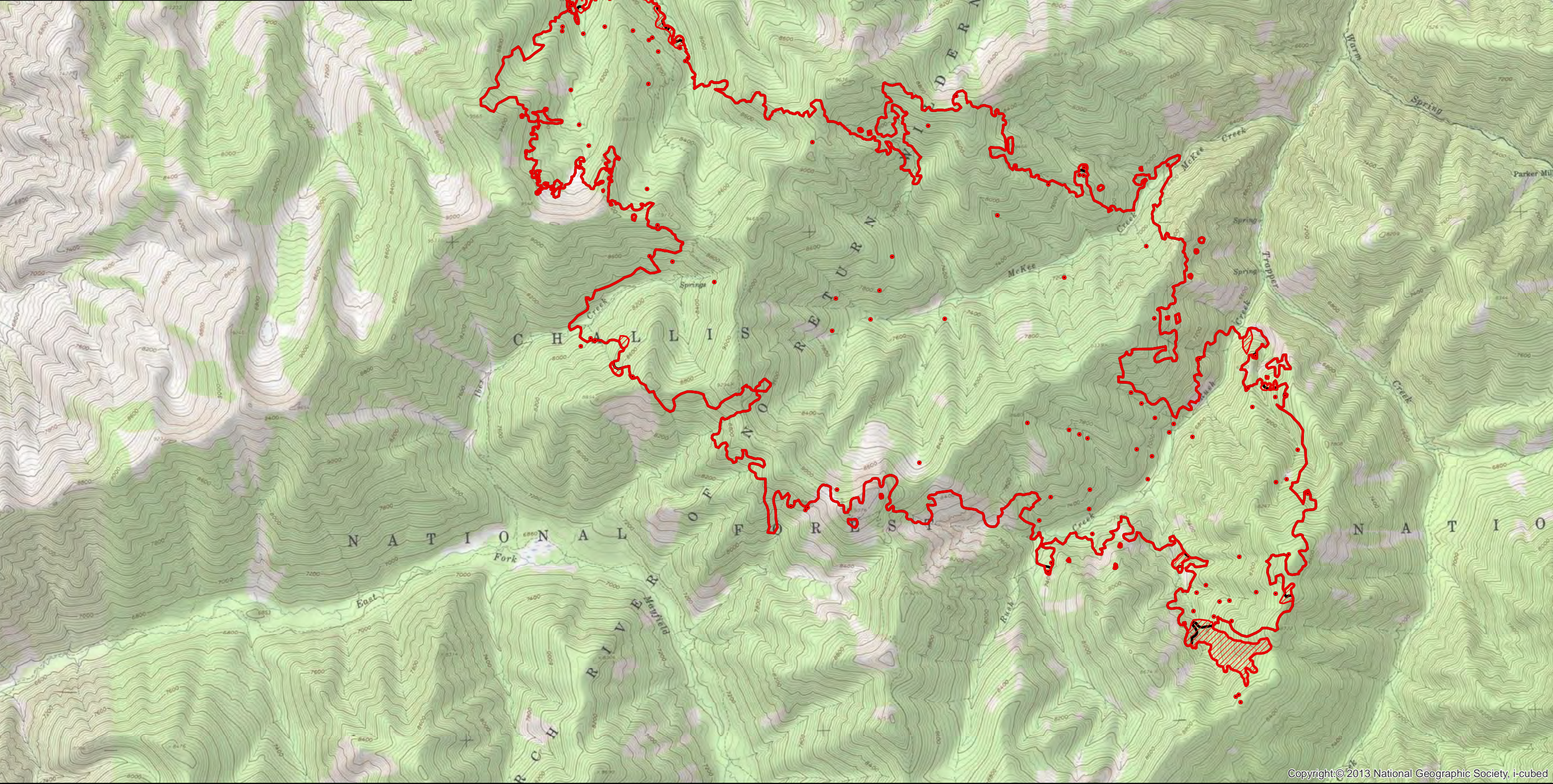


114°45'W 114°44'W 114°43'W 114°42'W 114°41'W 114°40'W 114°39'W 114°38'W 114°37'W 114°36'W 114°35'W

Infrared Map
ibex (ID-SCF-017139)
Map Date: 08/17/2017
Imagery Date: 08/17/2017
Imagery Time: 0233 MDT
IR Interpreted Acres: 5,387 acres
IRIN: Tammy Hocut

- Isolated Heat Sources
- Heat Perimeter
- Intense Heat
- Scattered Heat
- 08/12/2017 IR Perimeter

NAD 1983 UTM Zone 11N

114°45'W 114°44'W 114°43'W 114°42'W 114°41'W 114°40'W 114°39'W 114°38'W 114°37'W 114°36'W 114°35'W