

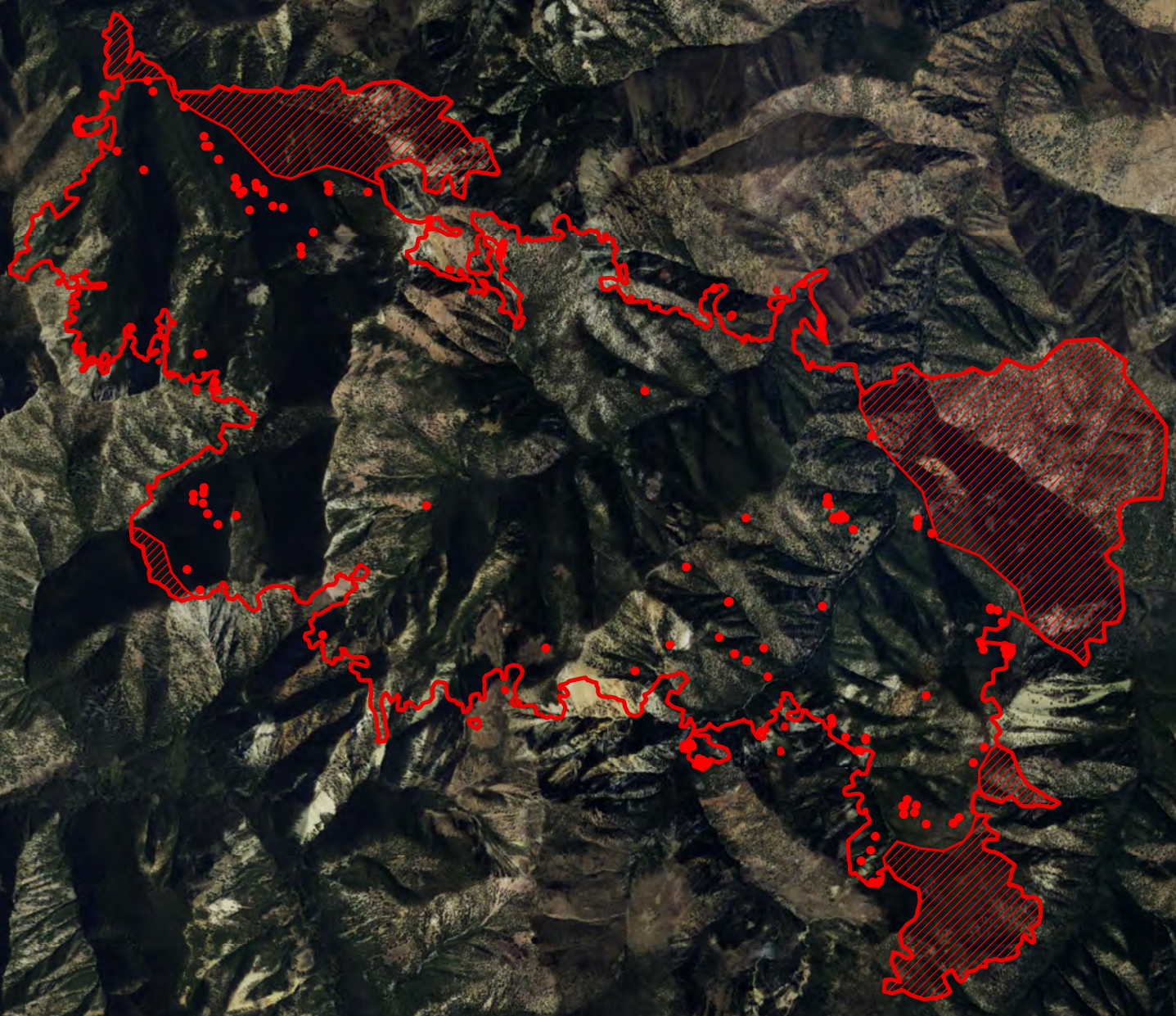
114°43'W 114°42'W 114°41'W 114°40'W 114°39'W 114°38'W 114°37'W 114°36'W 114°35'W 114°34'W


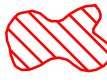

Ibex Fire
Heat Acres: 7,595
ID-SCF-017139
Infrared Interpretation
Imagery Date:
2017/08/23 0331 Hrs



44°39'N
44°38'N
44°37'N
44°36'N
44°35'N
44°34'N
44°33'N
44°32'N
44°31'N
44°30'N
44°29'N

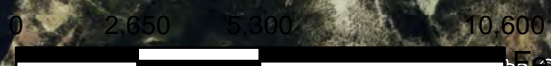
44°39'N
44°38'N
44°37'N
44°36'N
44°35'N
44°34'N
44°33'N
44°32'N
44°31'N
44°30'N
44°29'N



-  Heat Perimeter
-  Intense Heat Areas
-  Isolated Heat Sources

NAD 1983 UTM Zone 10N

IRIN: K Felker
Map produced:
8/23/2017 0440 hrs



Map data provided by: GeoEye, Earthstar Geographics, CNES/Airbus DS, USDA, USGS, AeroGRID, IGN, and the GIS User Community

114°45'W 114°44'W 114°43'W 114°42'W 114°41'W 114°40'W 114°39'W 114°38'W 114°37'W 114°36'W