

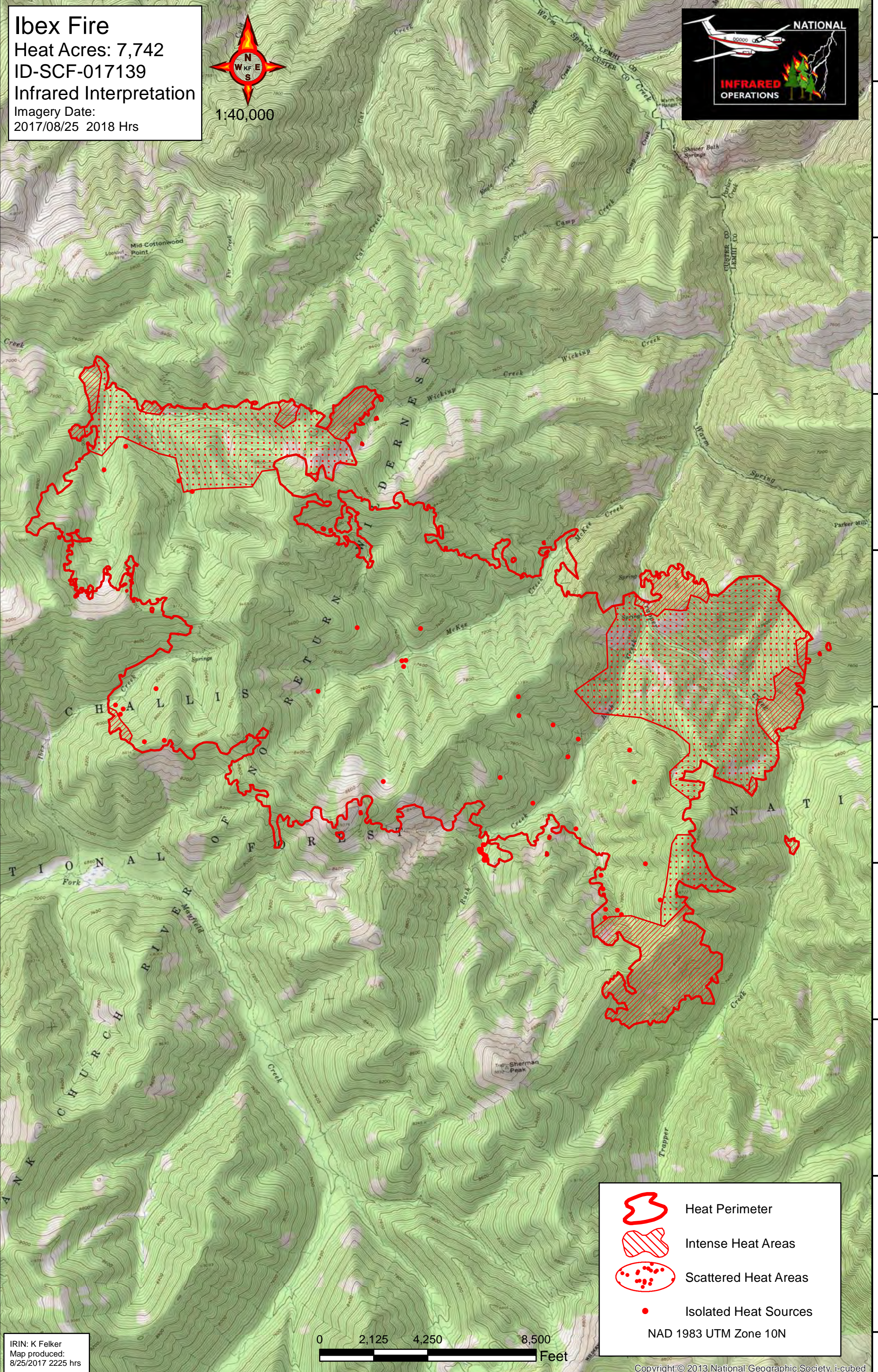
114°42'W 114°41'W 114°40'W 114°39'W 114°38'W 114°37'W 114°36'W 114°35'W





Ibex Fire
Heat Acres: 7,742
ID-SCF-017139
Infrared Interpretation
Imagery Date:
2017/08/25 2018 Hrs



44°39'N
44°38'N
44°37'N
44°36'N
44°35'N
44°34'N
44°33'N
44°32'N
44°31'N

44°38'N
44°37'N
44°36'N
44°35'N
44°34'N
44°33'N
44°32'N
44°31'N
44°30'N



-  Heat Perimeter
-  Intense Heat Areas
-  Scattered Heat Areas
-  Isolated Heat Sources

NAD 1983 UTM Zone 10N



IRIN: K Felker
Map produced:
8/25/2017 2225 hrs

114°43'W 114°42'W 114°41'W 114°40'W 114°39'W 114°38'W 114°37'W 114°36'W