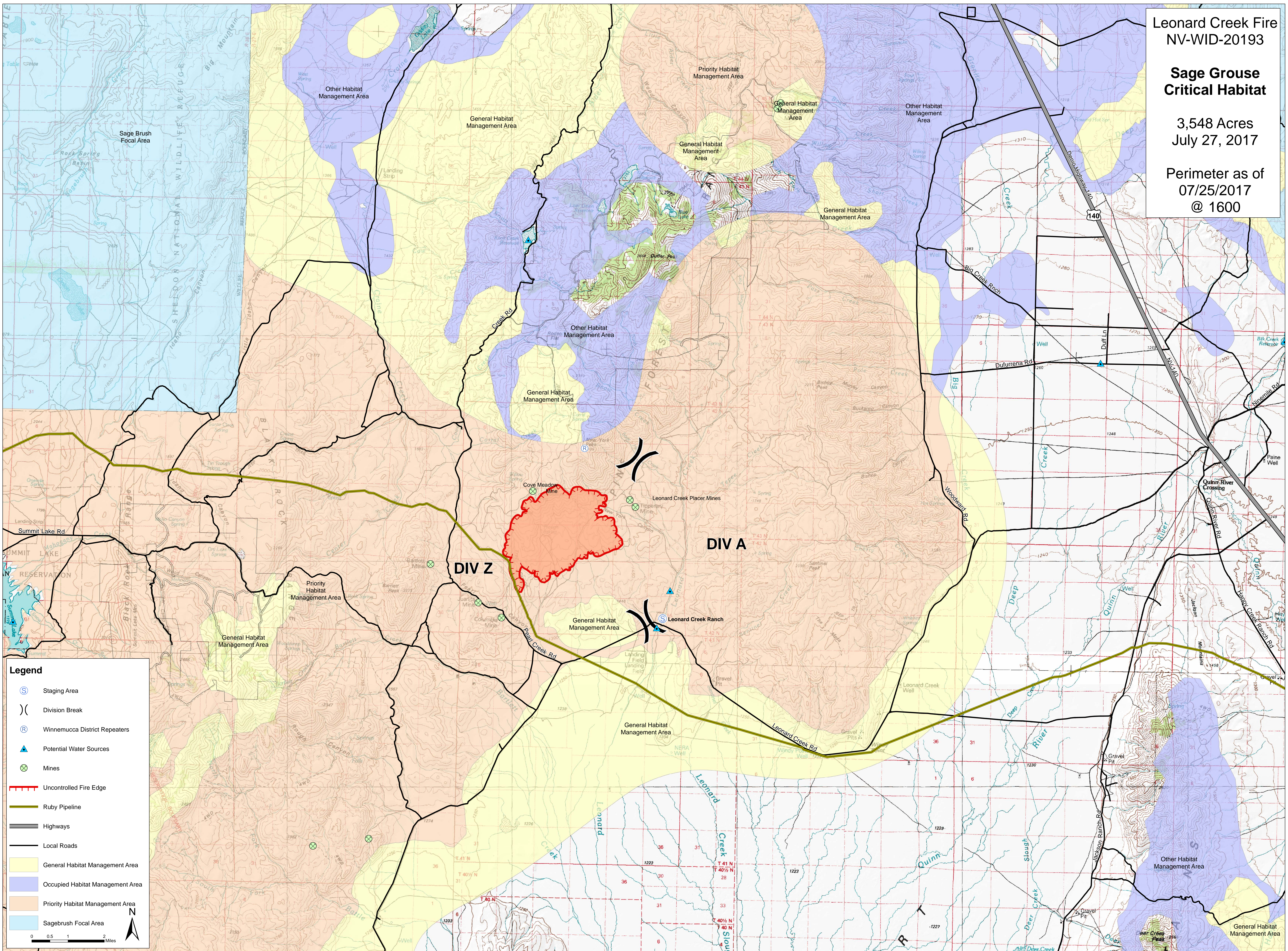


Leonard Creek Fire
NV-WID-20193

**Sage Grouse
Critical Habitat**

3,548 Acres
July 27, 2017

Perimeter as of
07/25/2017
@ 1600



Legend

- Ⓢ Staging Area
-)) Division Break
- Ⓡ Winnemucca District Repeaters
- ▲ Potential Water Sources
- ⊗ Mines
- Uncontrolled Fire Edge
- Ruby Pipeline
- Highways
- Local Roads
- General Habitat Management Area
- Occupied Habitat Management Area
- Priority Habitat Management Area
- Sagebrush Focal Area

0 0.5 1 2 Miles

N