

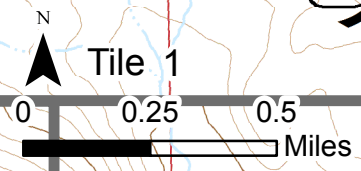
**DIV H**

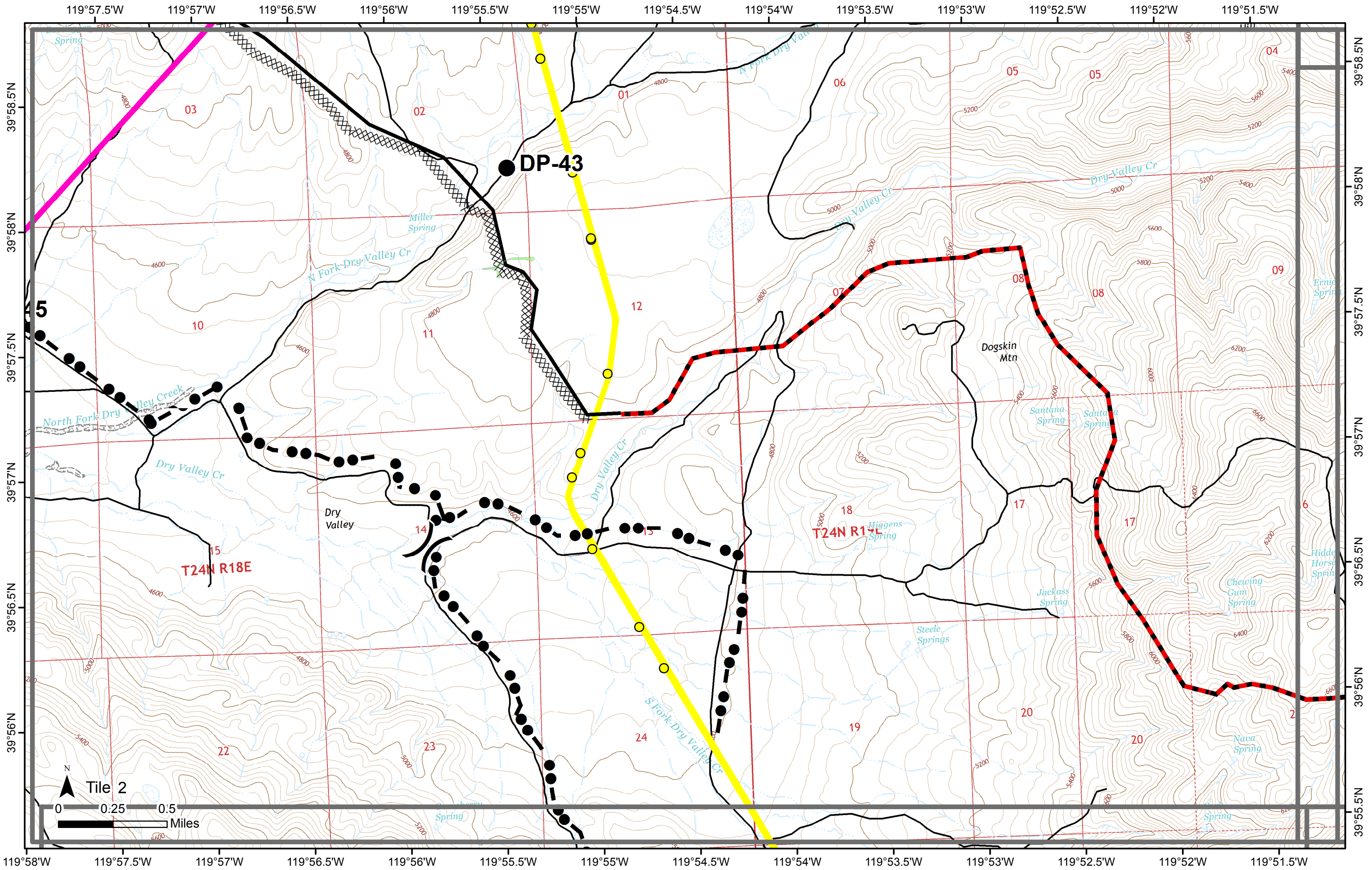
T25N R19E

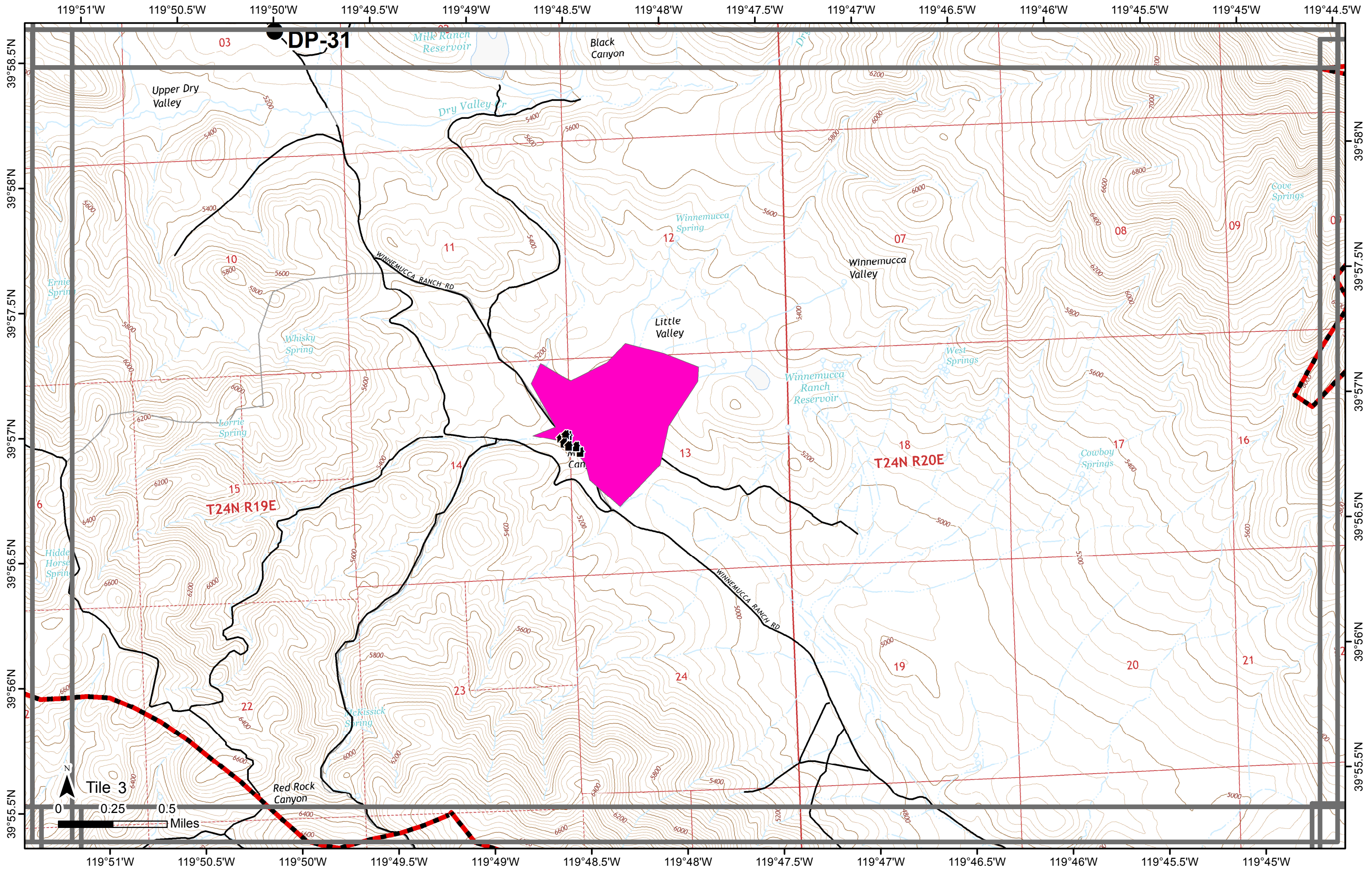
T25N R20E

DP-31

Tule Peak  
FCM





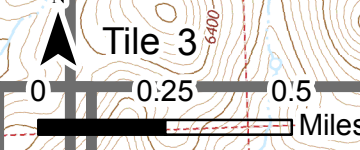


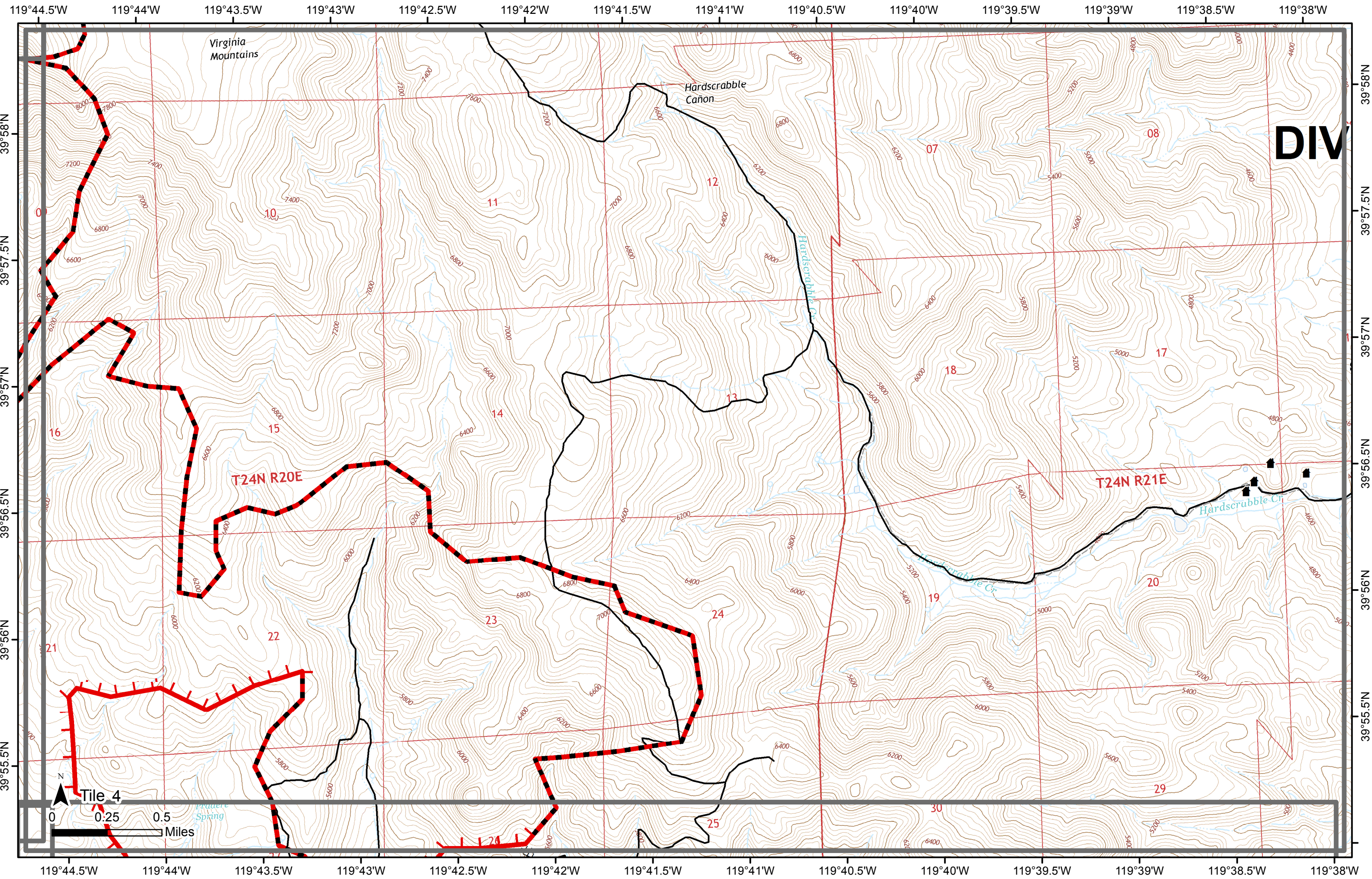
DP-31

T24N R19E

T24N R20E

Canyon





Virginia  
Mountains

Hardscrabble  
Cañon

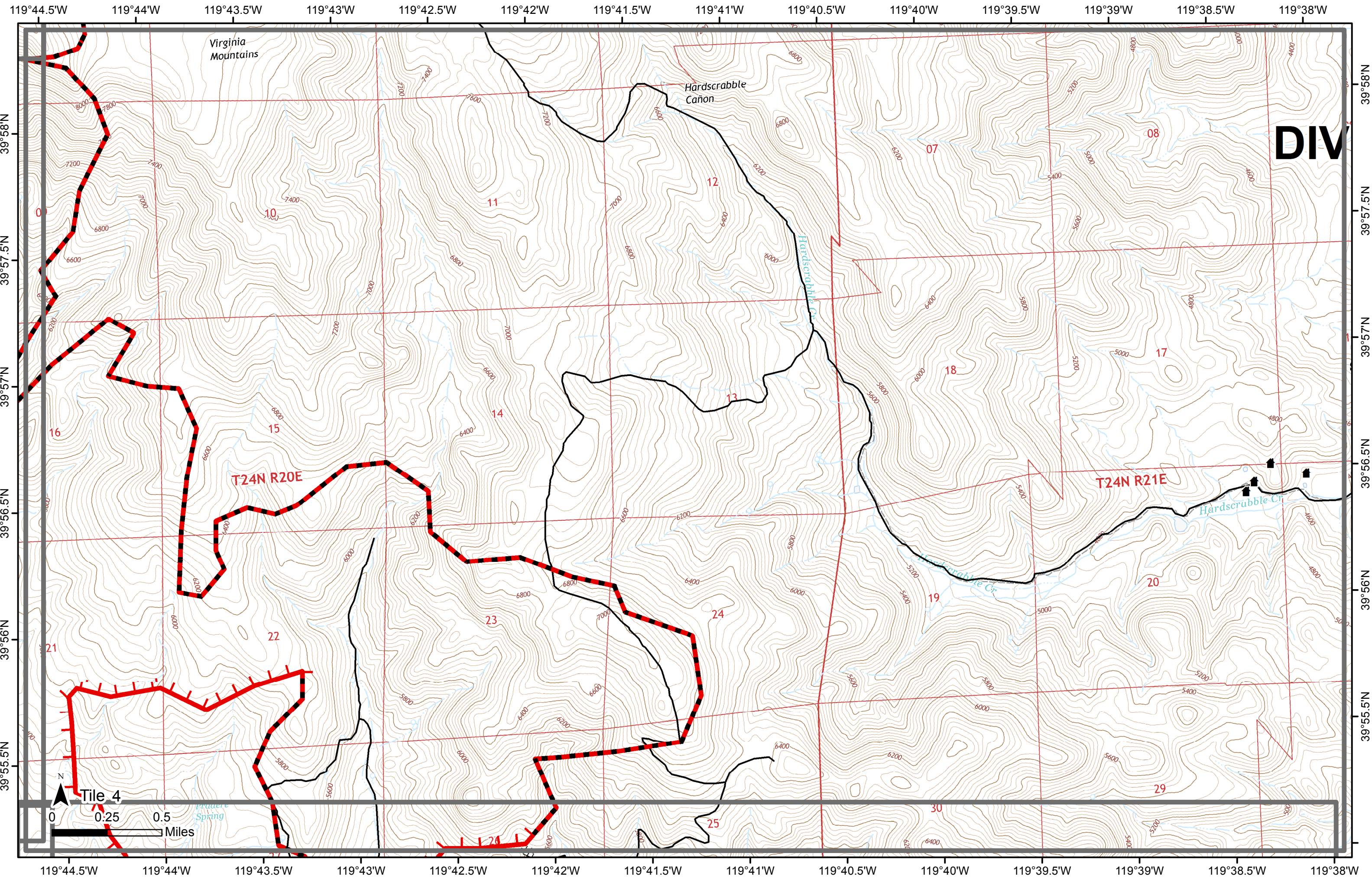
DIV

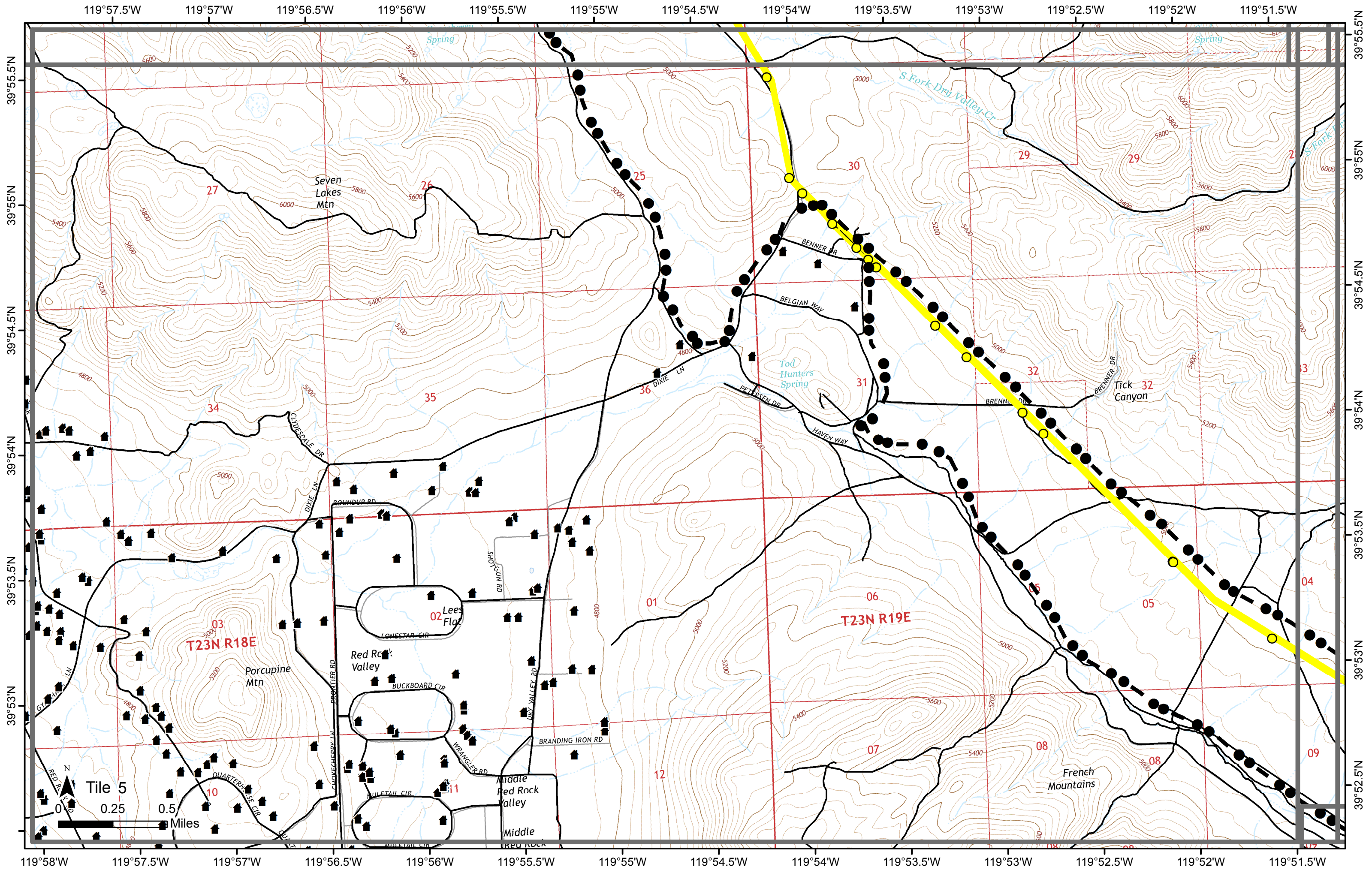
T24N R20E

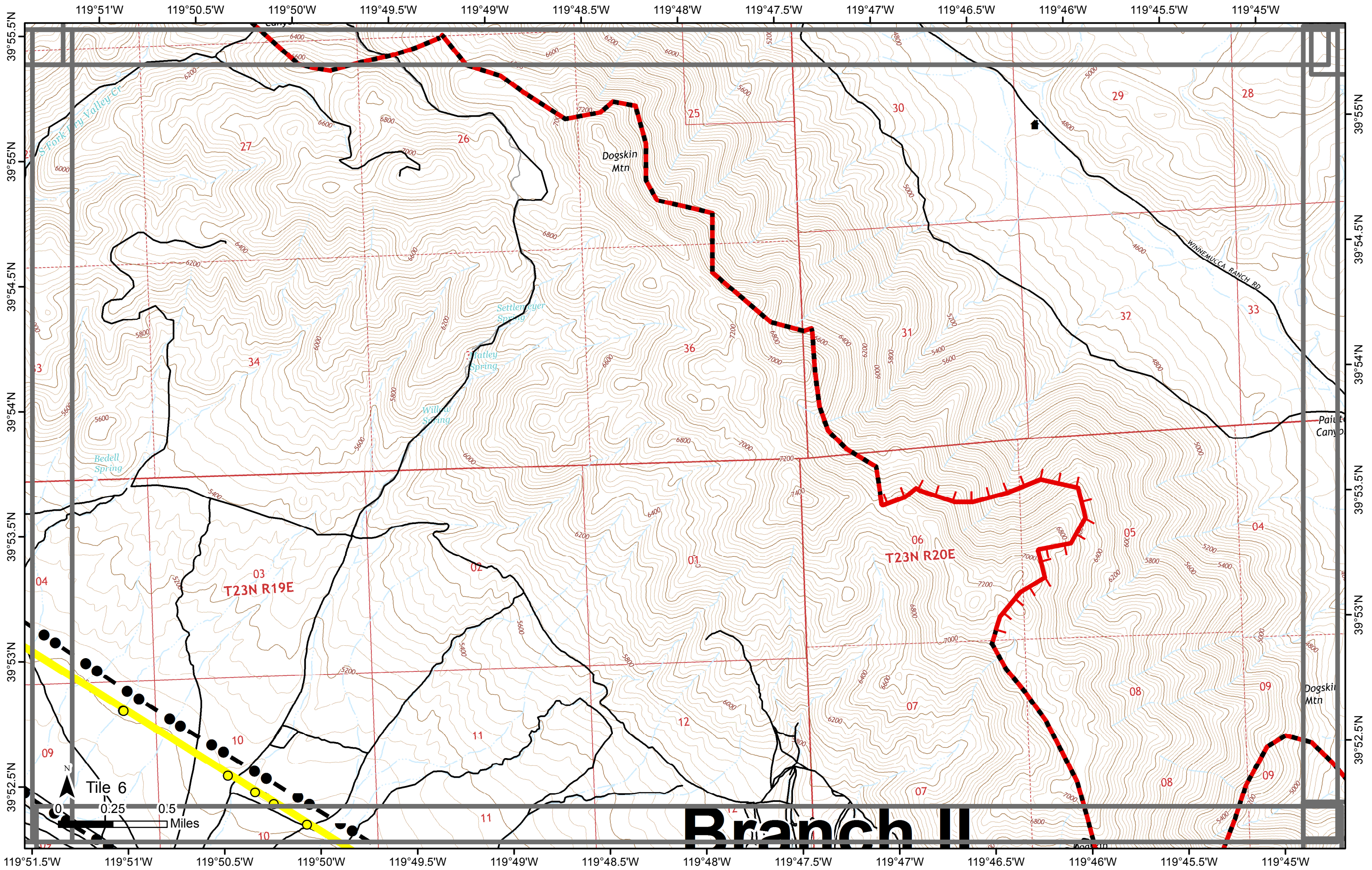
T24N R21E

Tile 4

0 0.25 0.5  
Miles







# Branch II

Tile 6  
0 0.25 0.5  
Miles

Dogskin Mtn

T23N R20E

T23N R19E

WINNEMUCCA RANCH RD

S. Fork Tule Valley Cr

Settler Meyer Spring

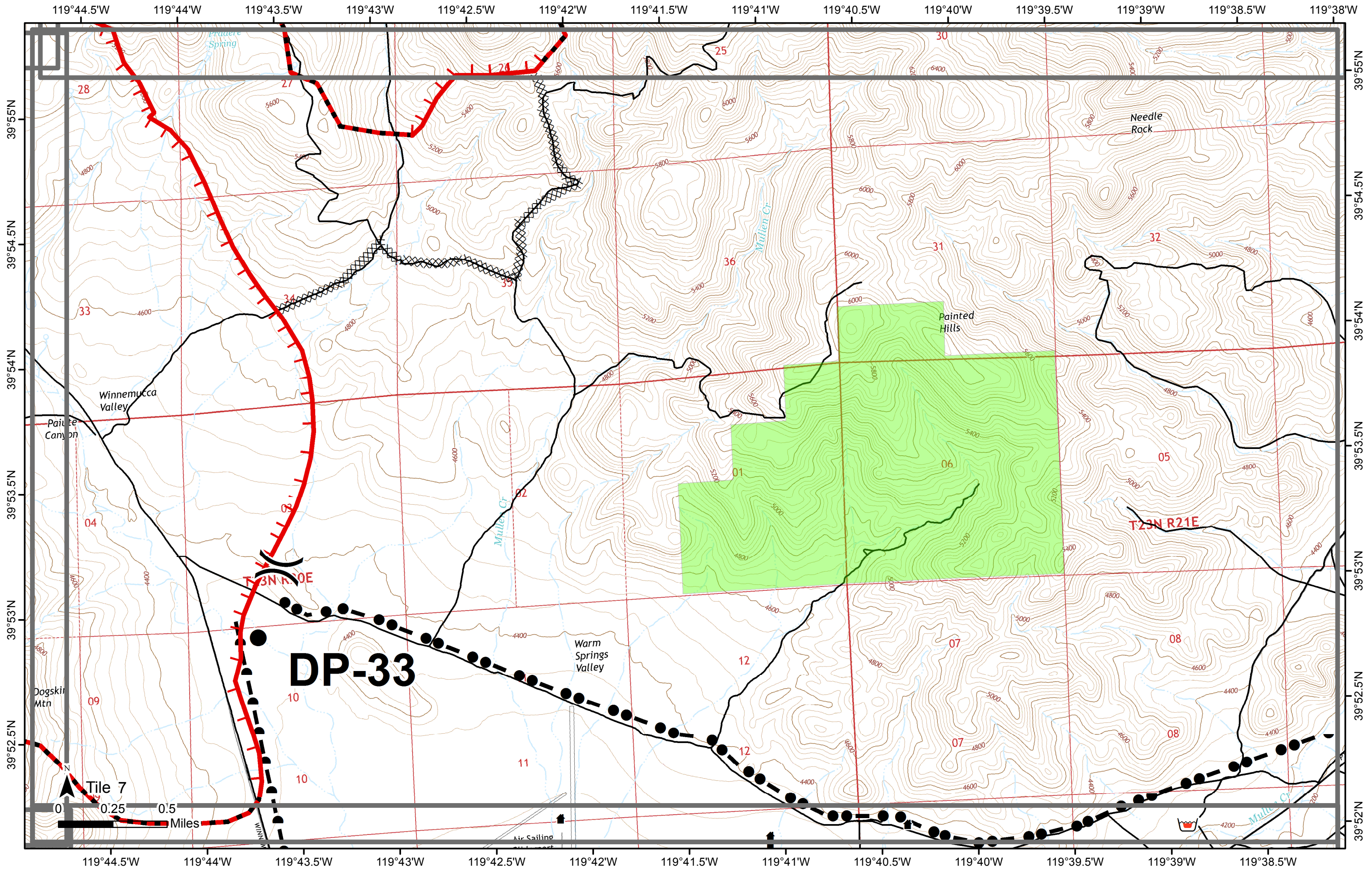
Fatley Spring

Wilkey Spring

Bedell Spring

Dogskin Mtn

Pauls Canyon



119°44.5'W 119°44'W 119°43.5'W 119°43'W 119°42.5'W 119°42'W 119°41.5'W 119°41'W 119°40.5'W 119°40'W 119°39.5'W 119°39'W 119°38.5'W 119°38'W

39°55'N  
39°54.5'N  
39°54'N  
39°53.5'N  
39°53'N  
39°52.5'N  
39°52'N

39°55'N  
39°54.5'N  
39°54'N  
39°53.5'N  
39°53'N  
39°52.5'N  
39°52'N

119°44.5'W 119°44'W 119°43.5'W 119°43'W 119°42.5'W 119°42'W 119°41.5'W 119°41'W 119°40.5'W 119°40'W 119°39.5'W 119°39'W 119°38.5'W 119°38'W

**DP-33**

**T23N R21E**

Painted Hills

Needle Rock

Winnemucca Valley

Warm Springs Valley

Prudere Spring

Mullen Cr.

Mulle Cr.

Mullen Cr.

Tile 7  
0 0.25 0.5  
Miles

Air Sailing

# Branch II

