

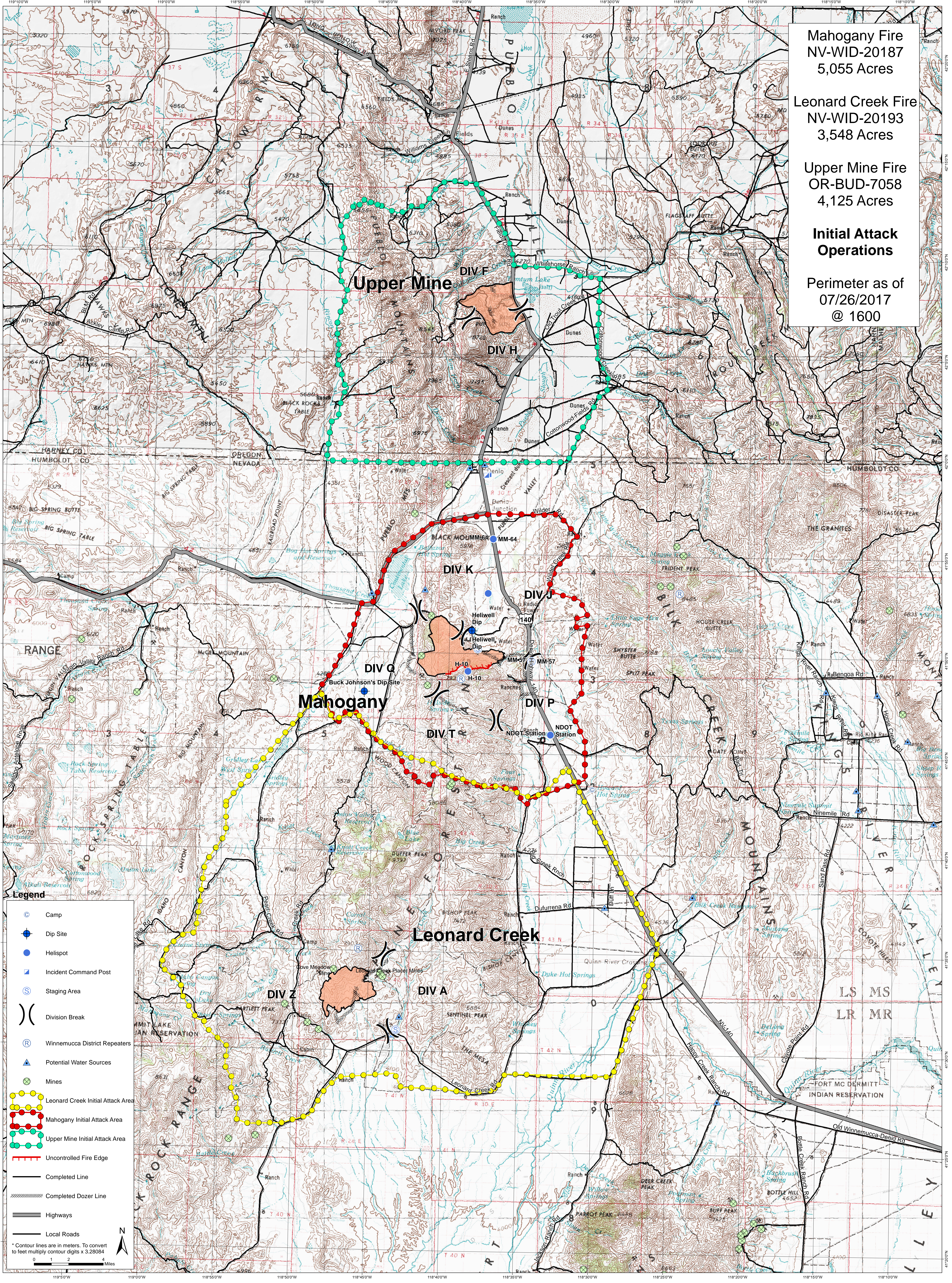
Mahogany Fire  
NV-WID-20187  
5,055 Acres

Leonard Creek Fire  
NV-WID-20193  
3,548 Acres

Upper Mine Fire  
OR-BUD-7058  
4,125 Acres

Initial Attack  
Operations

Perimeter as of  
07/26/2017  
@ 1600



**Legend**

- Camp
- Dip Site
- Helispot
- ▲ Incident Command Post
- Staging Area
- ) ( Division Break
- Ⓡ Winnemucca District Repeaters
- ▲ Potential Water Sources
- ⊗ Mines
- Leonard Creek Initial Attack Area
- Mahogany Initial Attack Area
- Upper Mine Initial Attack Area
- Uncontrolled Fire Edge
- Completed Line
- - - Completed Dozer Line
- Highways
- Local Roads

\* Contour lines are in meters. To convert to feet multiply contour digits x 3.28084

0 1 2 4 Miles