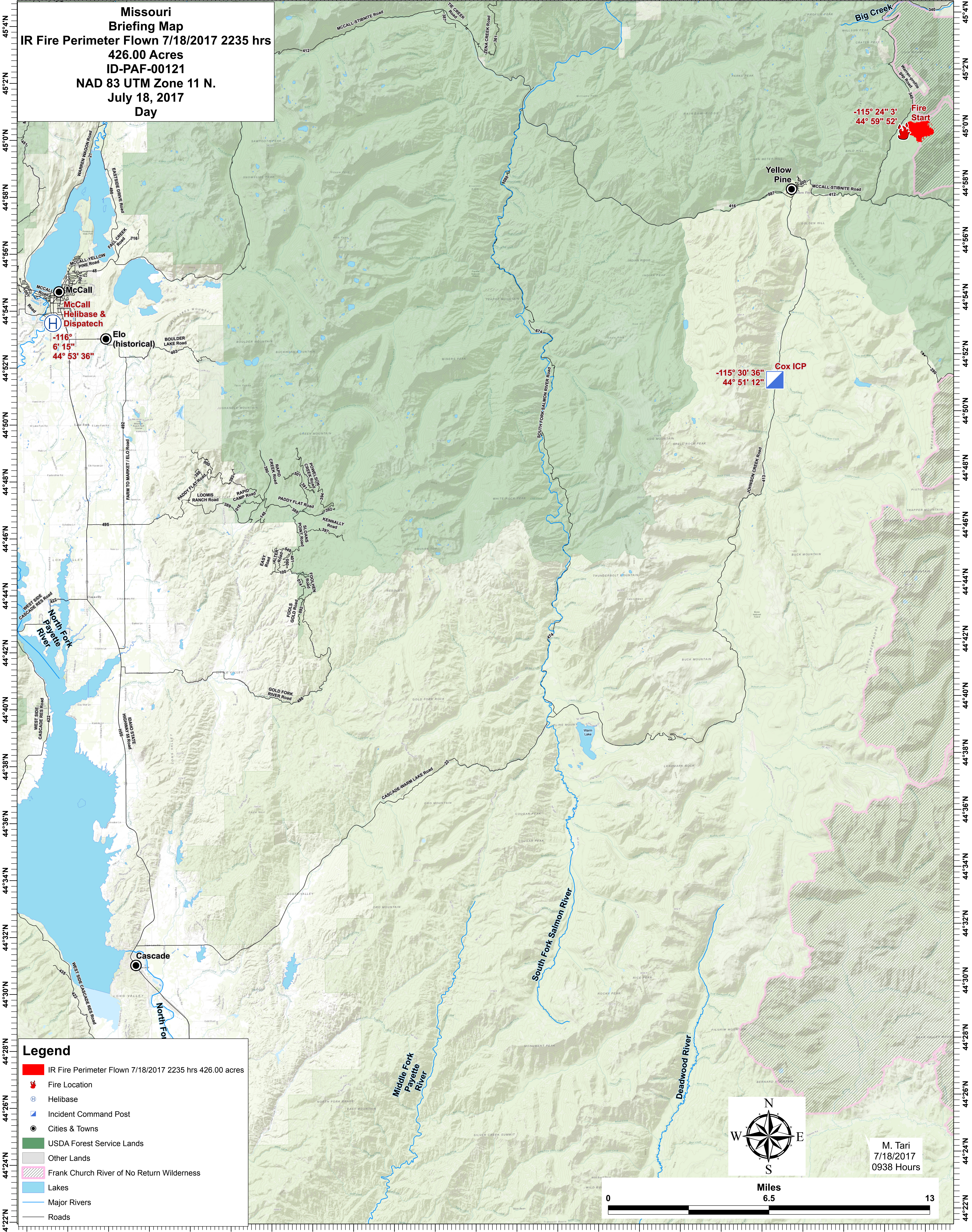


116°6'W 116°4'W 116°2'W 116°0'W 115°58'W 115°56'W 115°54'W 115°52'W 115°50'W 115°48'W 115°46'W 115°44'W 115°42'W 115°40'W 115°38'W 115°36'W 115°34'W 115°32'W 115°30'W 115°28'W 115°26'W 115°24'W 115°22'W

**Missouri**  
**Briefing Map**  
**IR Fire Perimeter Flown 7/18/2017 2235 hrs**  
**426.00 Acres**  
**ID-PAF-00121**  
**NAD 83 UTM Zone 11 N.**  
**July 18, 2017**  
**Day**



**-115° 24' 3"**  
**44° 59' 52"**  
**Fire Start**

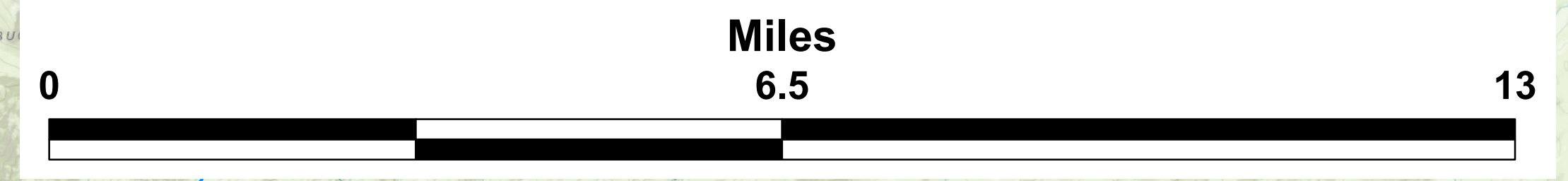
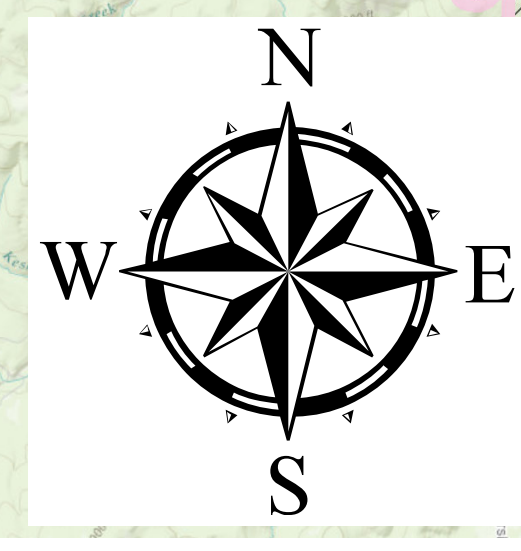
**-116° 6' 15"**  
**44° 53' 36"**  
**McCall Helibase & Dispatch**

**-115° 30' 36"**  
**44° 51' 12"**  
**Cox ICP**

**Elo (historical)**

**Legend**

- IR Fire Perimeter Flown 7/18/2017 2235 hrs 426.00 acres
- Fire Location
- Helibase
- Incident Command Post
- Cities & Towns
- USDA Forest Service Lands
- Other Lands
- Frank Church River of No Return Wilderness
- Lakes
- Major Rivers
- Roads



M. Tari  
7/18/2017  
0938 Hours

116°8'W 116°6'W 116°4'W 116°2'W 116°0'W 115°58'W 115°56'W 115°54'W 115°52'W 115°50'W 115°48'W 115°46'W 115°44'W 115°42'W 115°40'W 115°38'W 115°36'W 115°34'W 115°32'W 115°30'W 115°28'W 115°26'W 115°24'W 115°22'W