
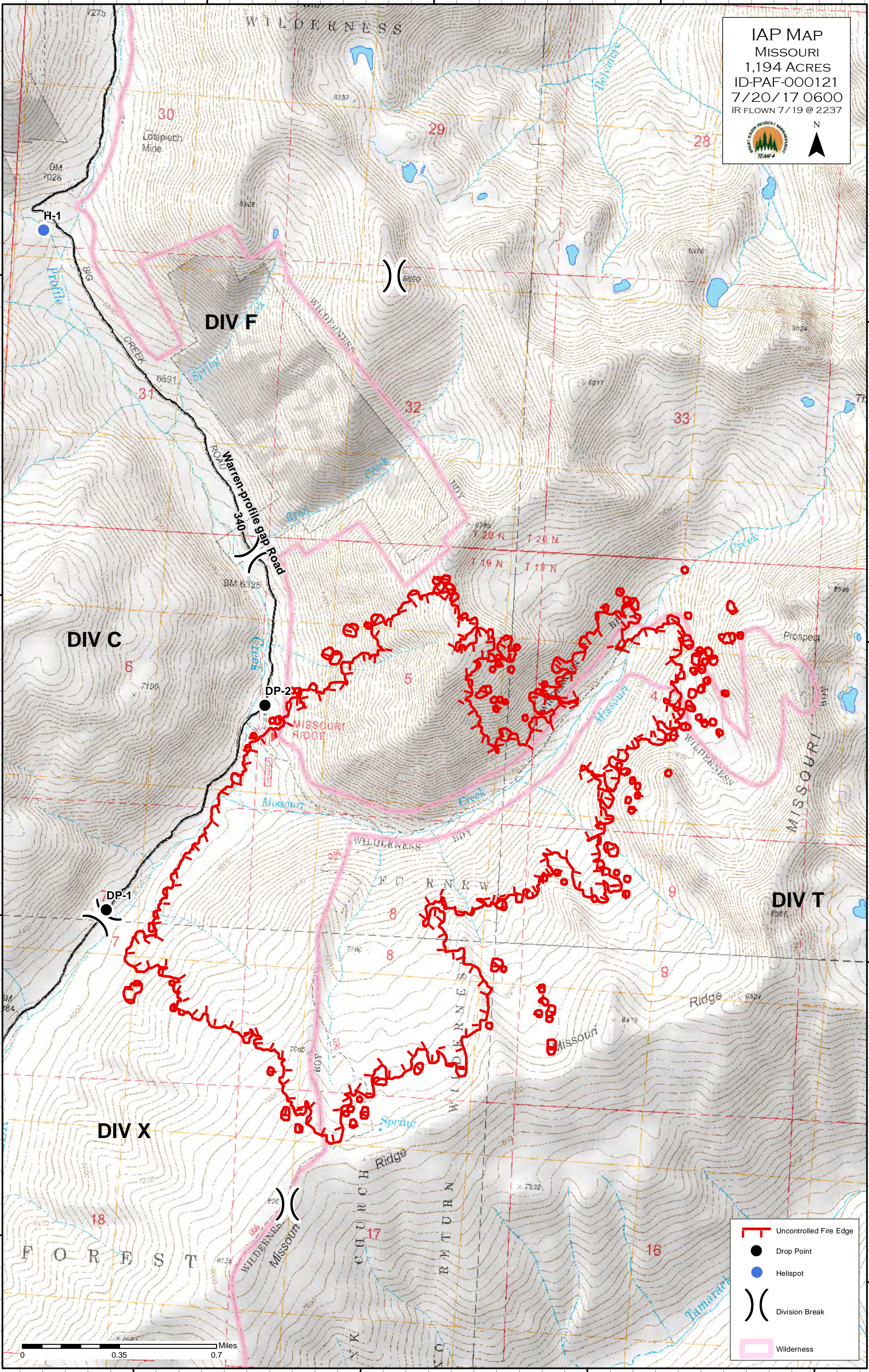


IAP MAP
 MISSOURI
 1,194 ACRES
 ID-PAF-000121
 7/20/17 0600
 IR FLOWN 7/19 @ 2237





N




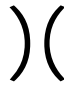
45°2'N
45°1'N
45°0'N
44°59'N


45°2'N
45°1'N
45°0'N
44°59'N

 Uncontrolled Fire Edge

 Drop Point

 HeliSpot

 Division Break

 Wilderness

