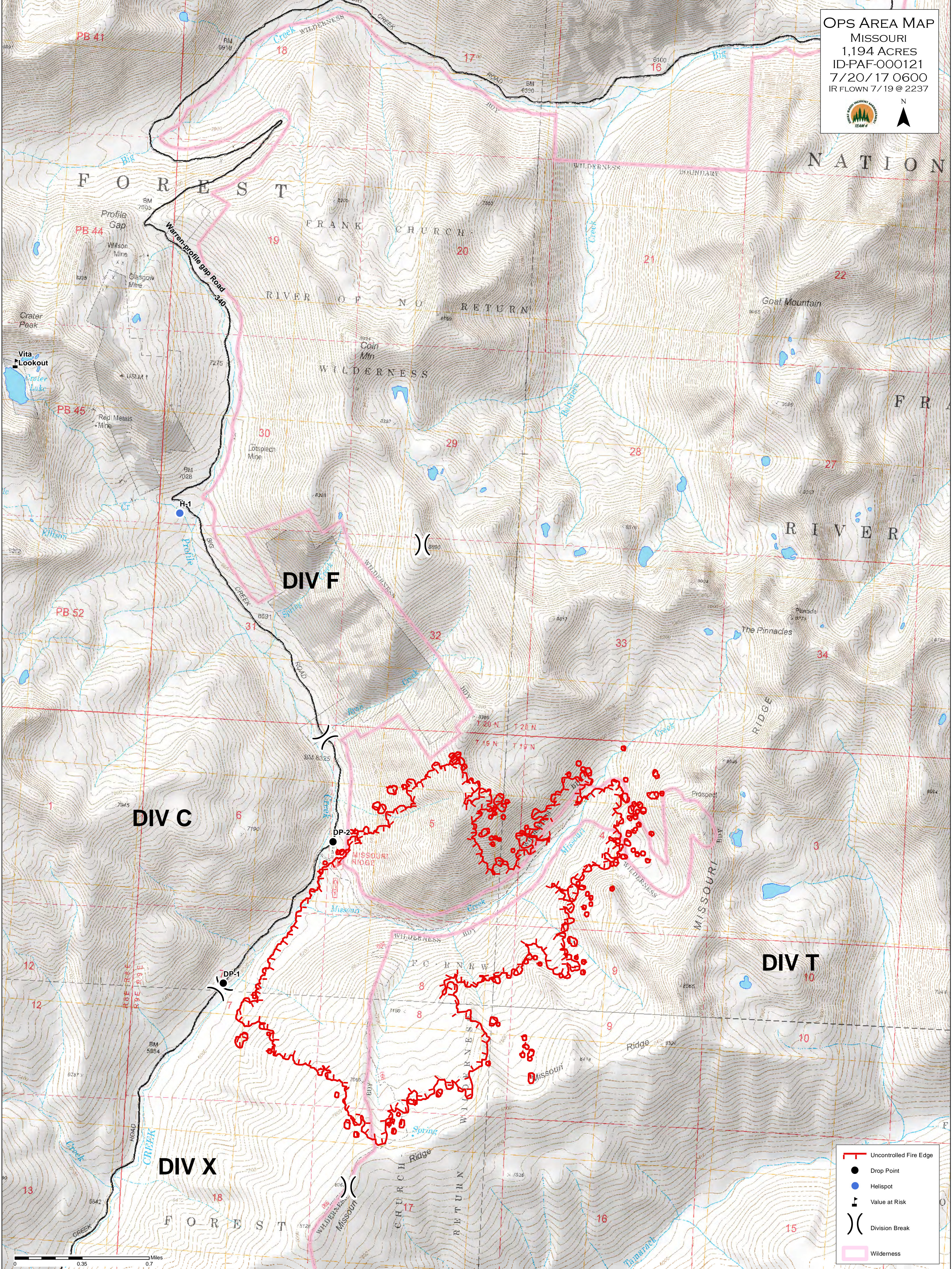


OPS AREA MAP
 MISSOURI
 1,194 ACRES
 ID-PAF-000121
 7/20/17 0600
 IR FLOWN 7/19 @ 2237



- Uncontrolled Fire Edge
- Drop Point
- Helispot
- Value at Risk
- Division Break
- Wilderness

0 0.35 0.7 Miles