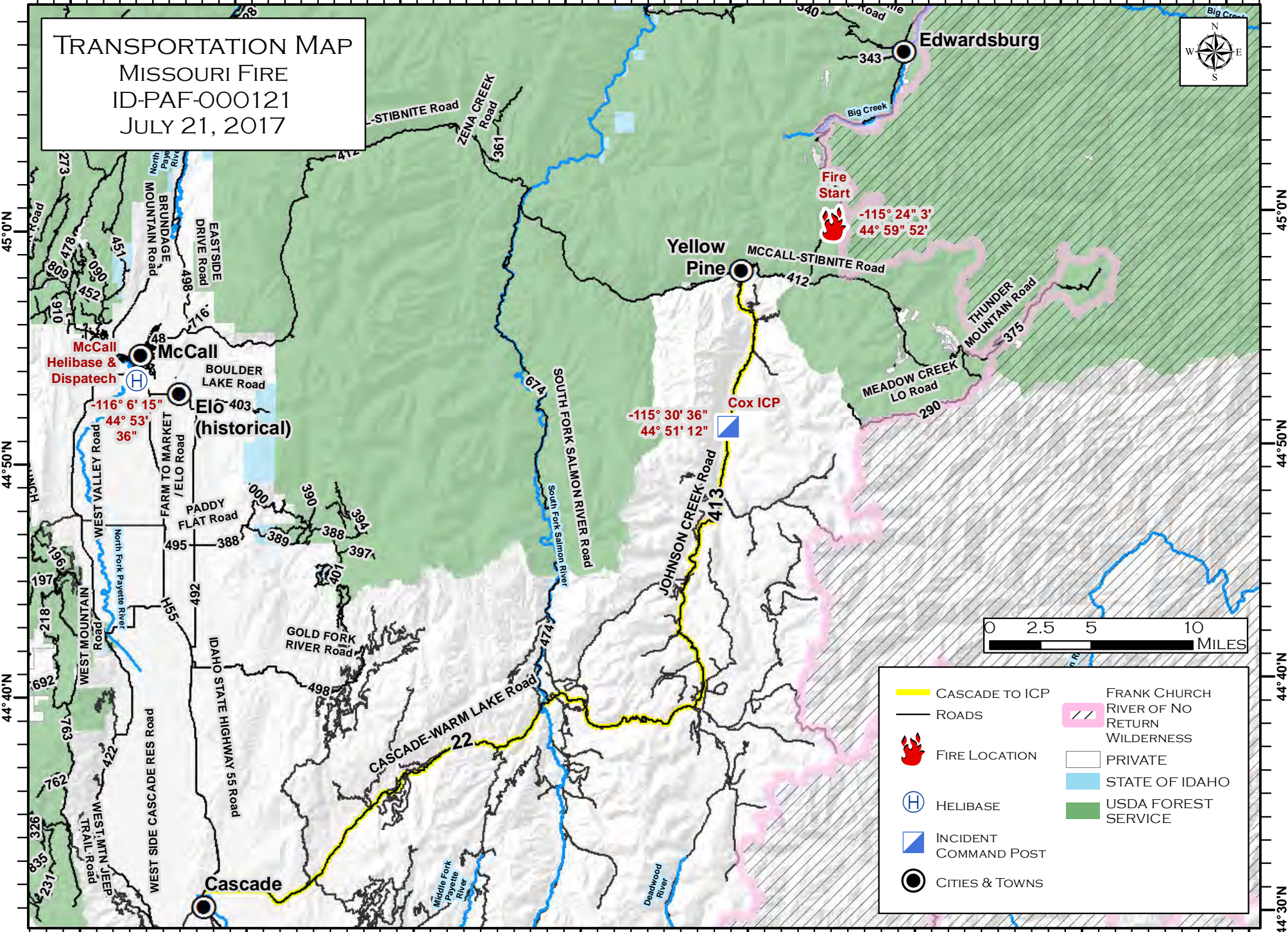


116°10'W 116°0'W 115°50'W 115°40'W 115°30'W 115°20'W 115°10'W 115°0'W

TRANSPORTATION MAP  
MISSOURI FIRE  
ID-PAF-000121  
JULY 21, 2017



- CASCADE TO ICP
- ROADS
- FIRE LOCATION
- HELIBASE
- INCIDENT COMMAND POST
- CITIES & TOWNS
- FRANK CHURCH RIVER OF NO RETURN WILDERNESS
- PRIVATE
- STATE OF IDAHO
- USDA FOREST SERVICE

116°10'W 116°0'W 115°50'W 115°40'W 115°30'W 115°20'W 115°10'W 115°0'W

45°0'N  
44°50'N  
44°40'N  
44°30'N

45°0'N  
44°50'N  
44°40'N  
44°30'N