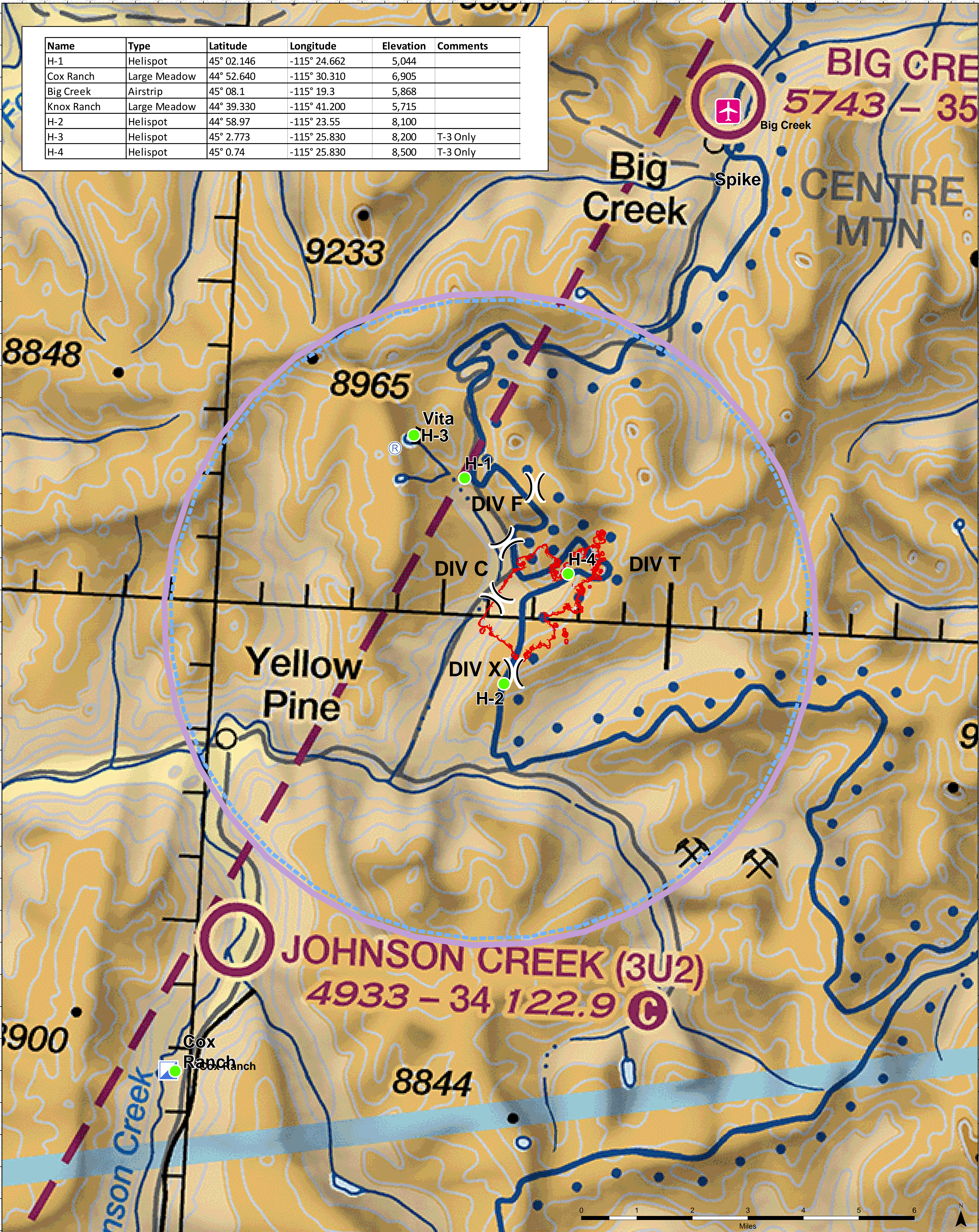


Name	Type	Latitude	Longitude	Elevation	Comments
H-1	Helispot	45° 02.146	-115° 24.662	5,044	
Cox Ranch	Large Meadow	44° 52.640	-115° 30.310	6,905	
Big Creek	Airstrip	45° 08.1	-115° 19.3	5,868	
Knox Ranch	Large Meadow	44° 39.330	-115° 41.200	5,715	
H-2	Helispot	44° 58.97	-115° 23.55	8,100	
H-3	Helispot	45° 2.773	-115° 25.830	8,200	T-3 Only
H-4	Helispot	45° 0.74	-115° 25.830	8,500	T-3 Only



AIR OPS MAP

MISSOURI
 1,276 ACRES
 ID-PAF-000121
 7/22/2017 0600 HRS
 IR FLOWN 7/22 @ 0023 HRS



- UNCONTROLLED FIRE EDGE
- TFR
- REPEATER
- ✈ AIRSTRIP OR AIRPORT
- HELISPOT
- INCIDENT COMMAND POST
- ♣ VALUE AT RISK
-) DIVISION BREAK