

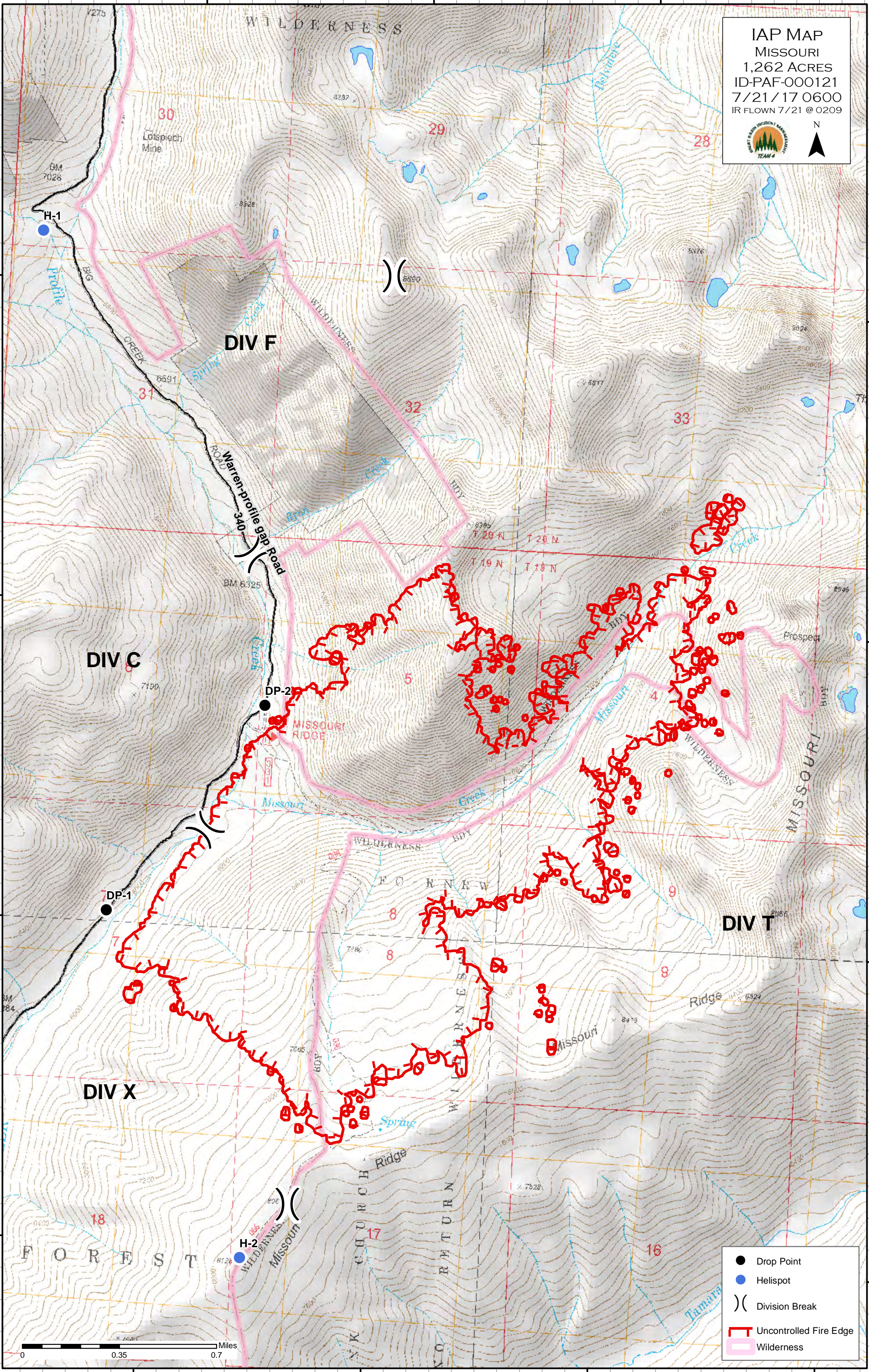


**IAP MAP**  
 MISSOURI  
 1,262 ACRES  
 ID-PAF-000121  
 7/21/17 0600  
 IR FLOWN 7/21 @ 0209

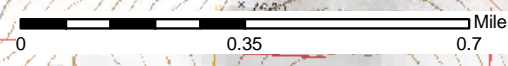


N

45°2'N 45°1'N 45°0'N 44°59'N

115°24'W 115°23'W 115°22'W 115°21'W



-  Drop Point
-  Helispot
-  Division Break
-  Uncontrolled Fire Edge
-  Wilderness