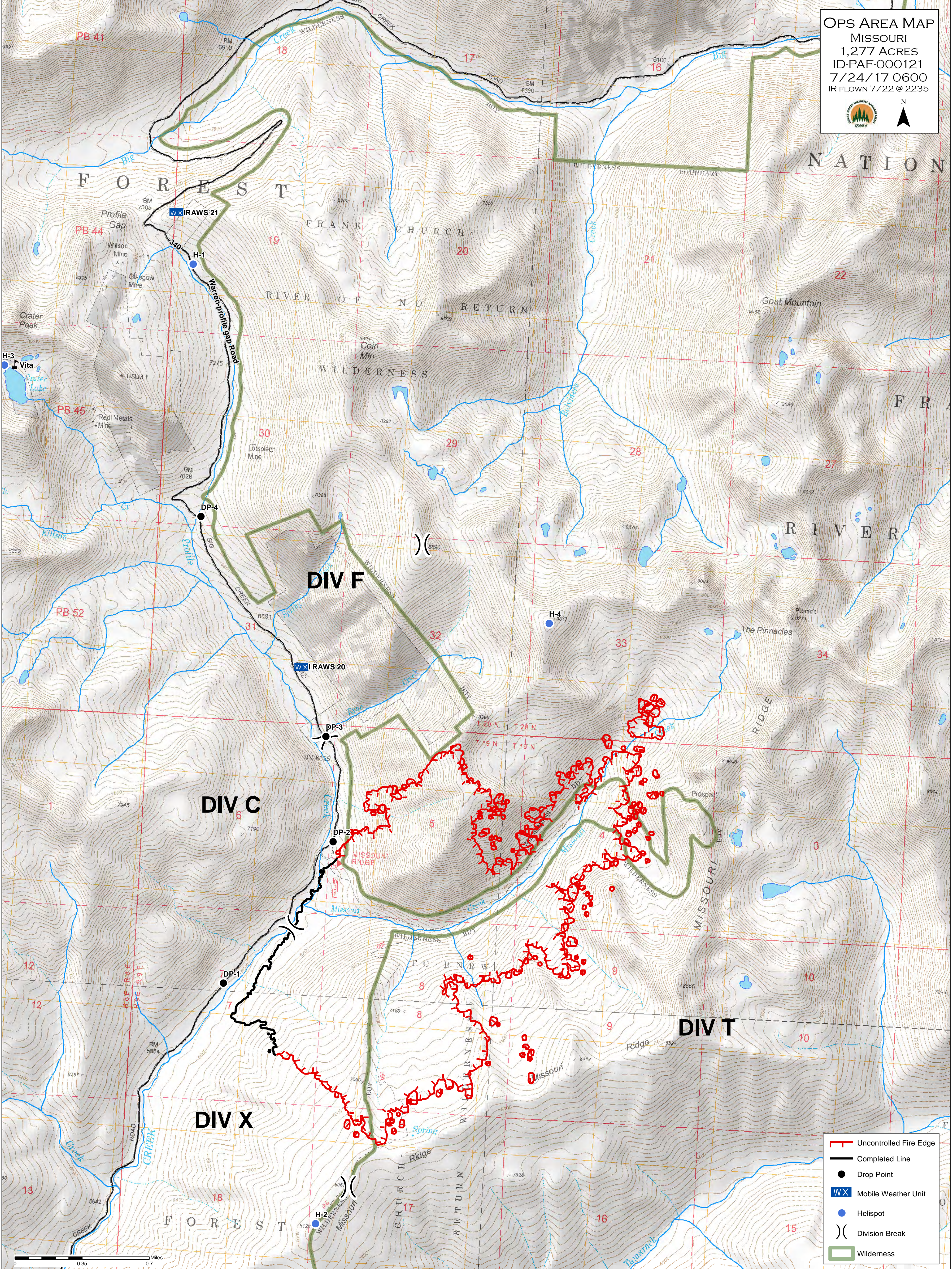


OPS AREA MAP
 MISSOURI
 1,277 ACRES
 ID-PAF-000121
 7/24/17 0600
 IR FLOWN 7/22 @ 2235



	Uncontrolled Fire Edge
	Completed Line
	Drop Point
	Mobile Weather Unit
	Helispot
	Division Break
	Wilderness