
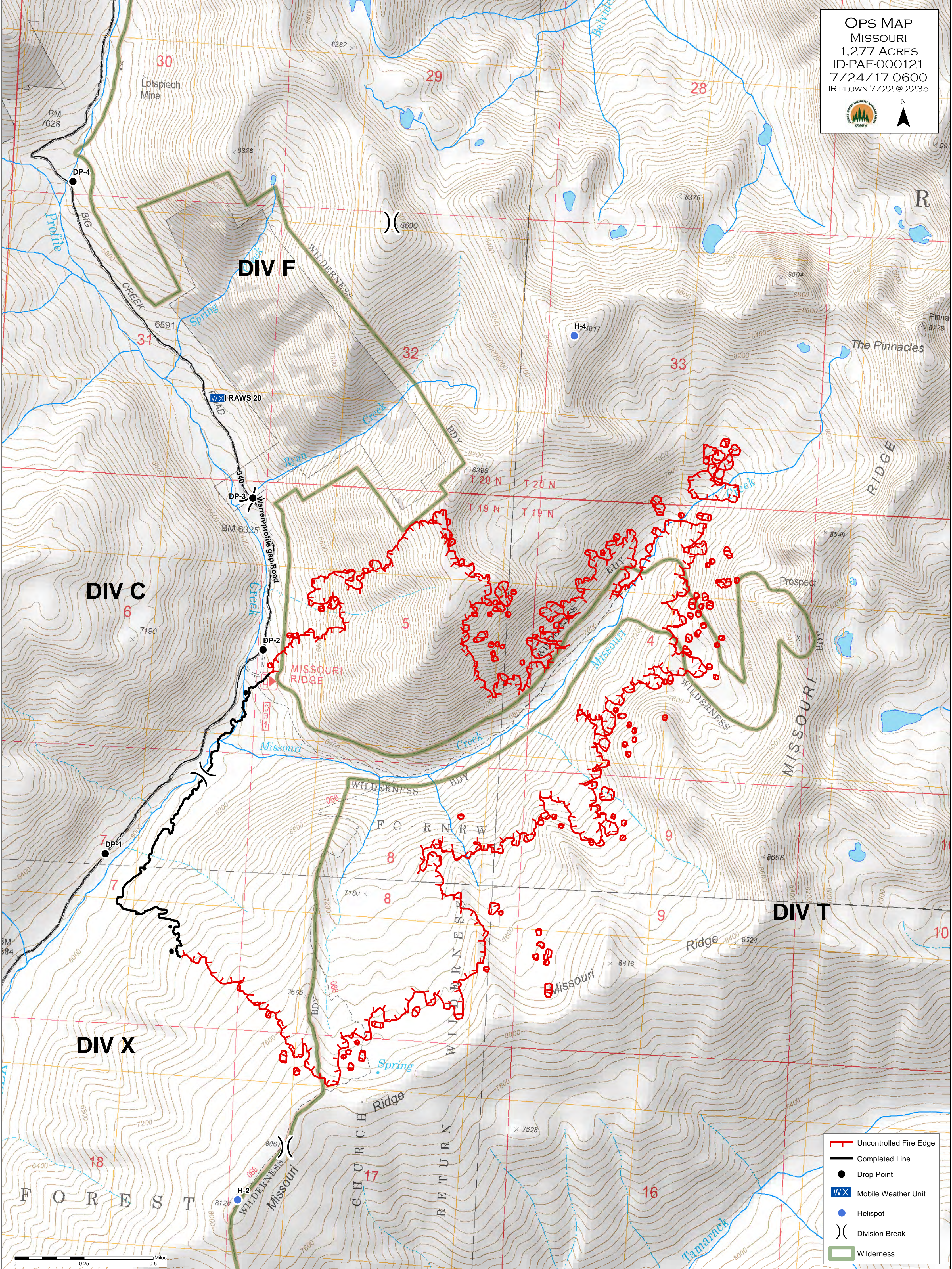









OPS MAP
MISSOURI
 1,277 ACRES
 ID-PAF-000121
 7/24/17 0600
 IR FLOWN 7/22 @ 2235



N



-  Uncontrolled Fire Edge
-  Completed Line
-  Drop Point
-  Mobile Weather Unit
-  Helispot
-  Division Break
-  Wilderness

