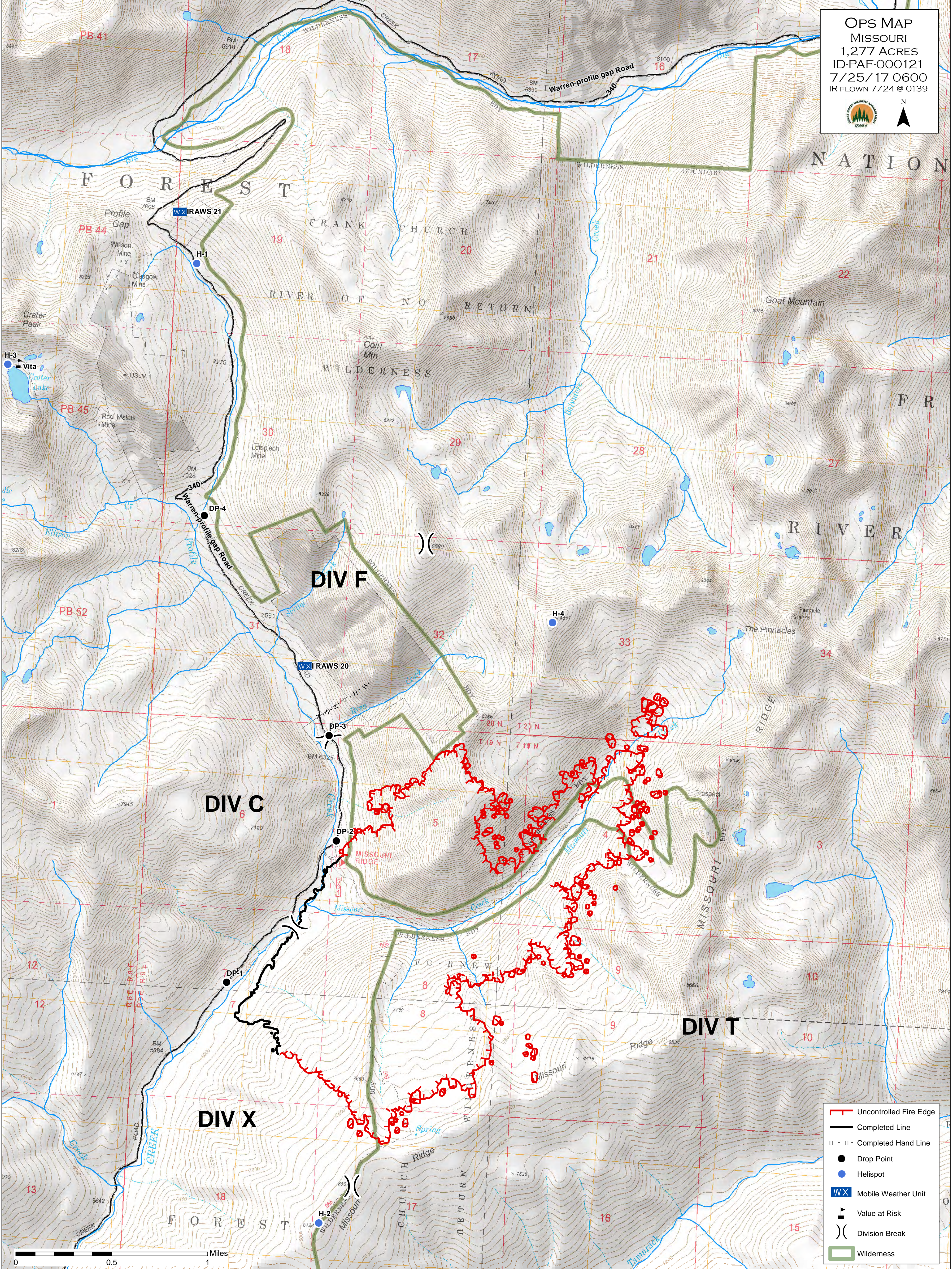


OPS MAP
 MISSOURI
 1,277 ACRES
 ID-PAF-000121
 7/25/17 0600
 IR FLOWN 7/24 @ 0139



- Uncontrolled Fire Edge
- Completed Line
- Completed Hand Line
- Drop Point
- Helispot
- Mobile Weather Unit
- Value at Risk
- Division Break
- Wilderness