


115°24'W 115°23'W 115°22'W


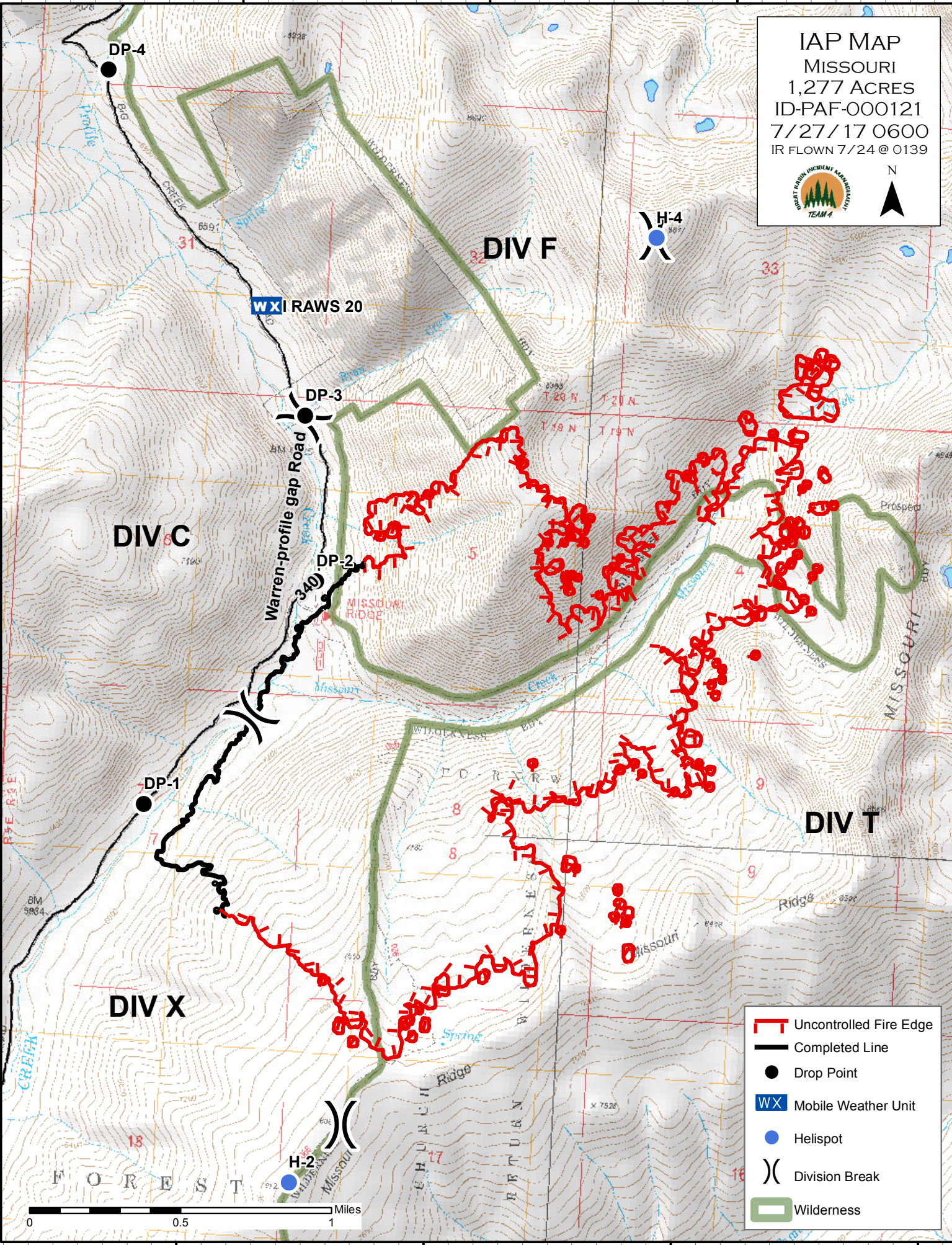
45°2'N 45°1'N 45°0'N 44°59'N






45°2'N 45°1'N 45°0'N 44°59'N

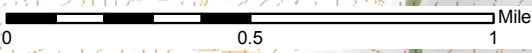
IAP MAP
 MISSOURI
 1,277 ACRES
 ID-PAF-000121
 7/27/17 0600
 IR FLOWN 7/24 @ 0139



N

-  Uncontrolled Fire Edge
-  Completed Line
-  Drop Point
-  Mobile Weather Unit
-  Helispot
-  Division Break
-  Wilderness



115°24'W 115°23'W 115°22'W 115°21'W