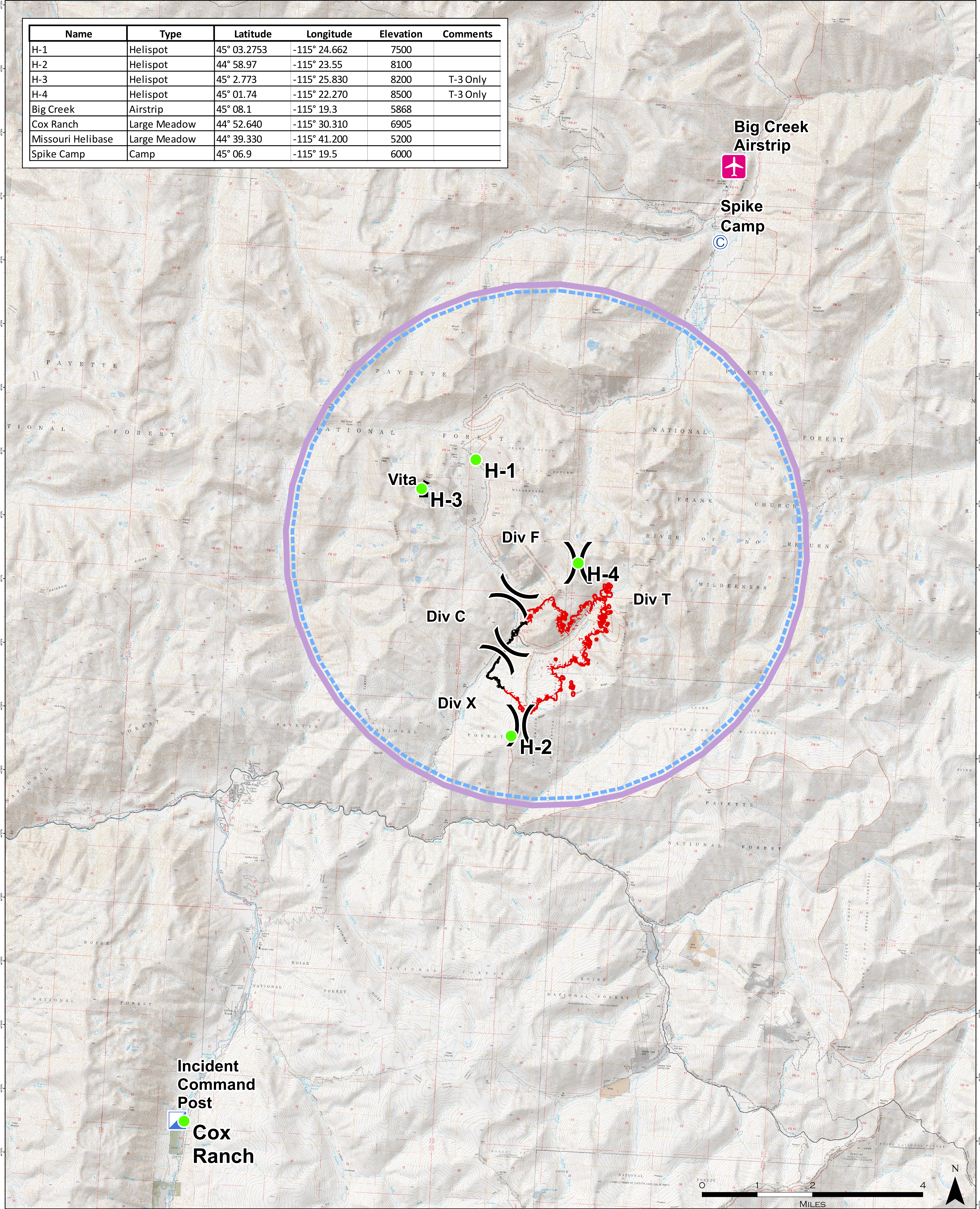


| Name              | Type         | Latitude    | Longitude    | Elevation | Comments |
|-------------------|--------------|-------------|--------------|-----------|----------|
| H-1               | Helispot     | 45° 03.2753 | -115° 24.662 | 7500      |          |
| H-2               | Helispot     | 44° 58.97   | -115° 23.55  | 8100      |          |
| H-3               | Helispot     | 45° 2.773   | -115° 25.830 | 8200      | T-3 Only |
| H-4               | Helispot     | 45° 01.74   | -115° 22.270 | 8500      | T-3 Only |
| Big Creek         | Airstrip     | 45° 08.1    | -115° 19.3   | 5868      |          |
| Cox Ranch         | Large Meadow | 44° 52.640  | -115° 30.310 | 6905      |          |
| Missouri Helibase | Large Meadow | 44° 39.330  | -115° 41.200 | 5200      |          |
| Spike Camp        | Camp         | 45° 06.9    | -115° 19.5   | 6000      |          |



**AIR OPS MAP**  
MISSOURI  
1,277 ACRES  
ID-PAF-000121  
7/28/2017 0600 HRS  
IR FLOWN 7/24 @ 0139 HRS



- UNCONTROLLED FIRE EDGE
- COMPLETED LINE
- TFR
- CAMP
- AIRSTRIP OR AIRPORT
- HELISPOT
- DIVISION BREAK
- INCIDENT COMMAND POST
- VALUE AT RISK