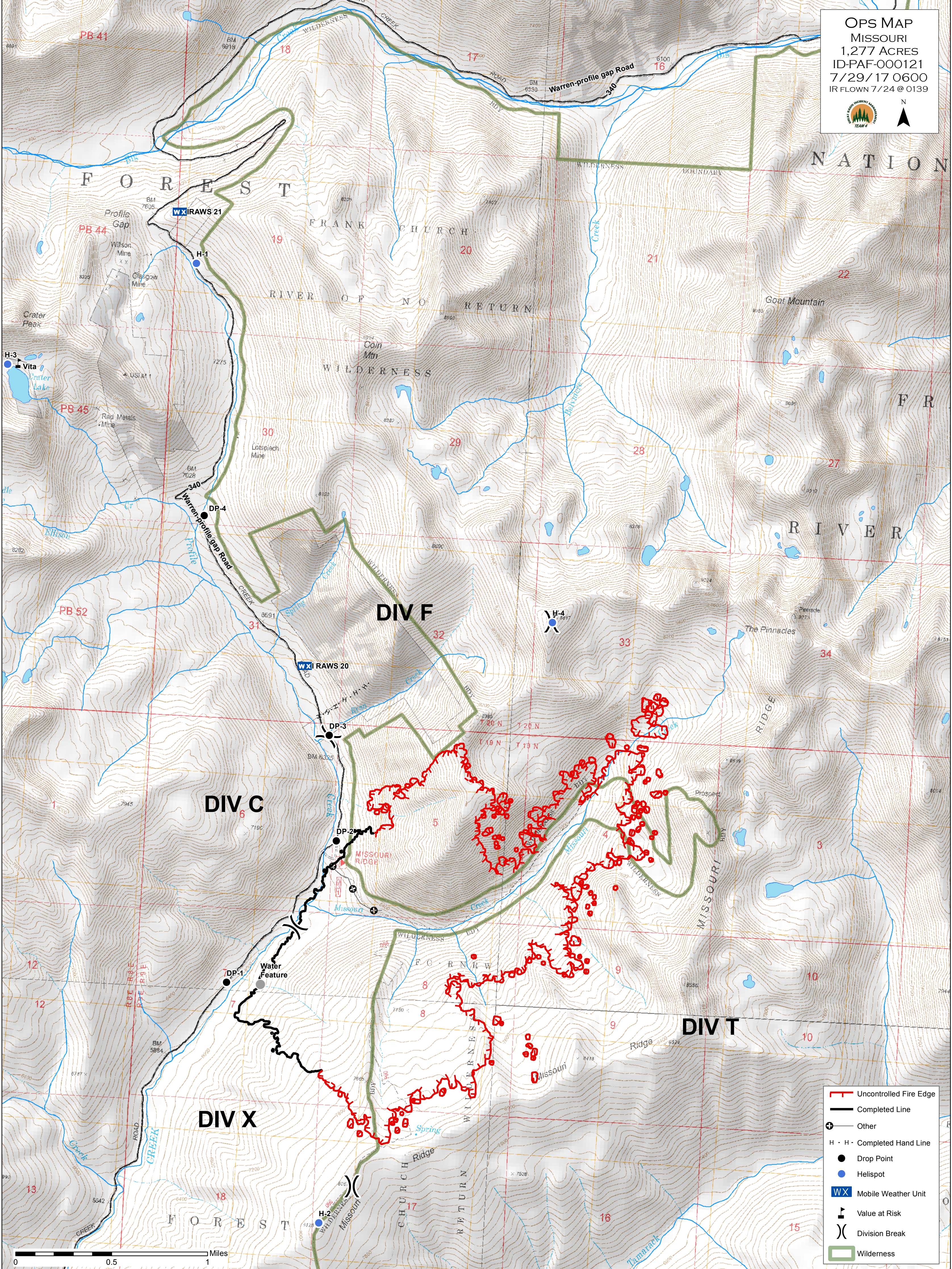


**OPS MAP**  
 MISSOURI  
 1,277 ACRES  
 ID-PAF-000121  
 7/29/17 0600  
 IR FLOWN 7/24 @ 0139



- Uncontrolled Fire Edge
- Completed Line
- Other
- Completed Hand Line
- Drop Point
- Helispot
- Mobile Weather Unit
- Value at Risk
- Division Break
- Wilderness

