
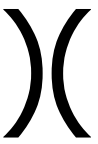






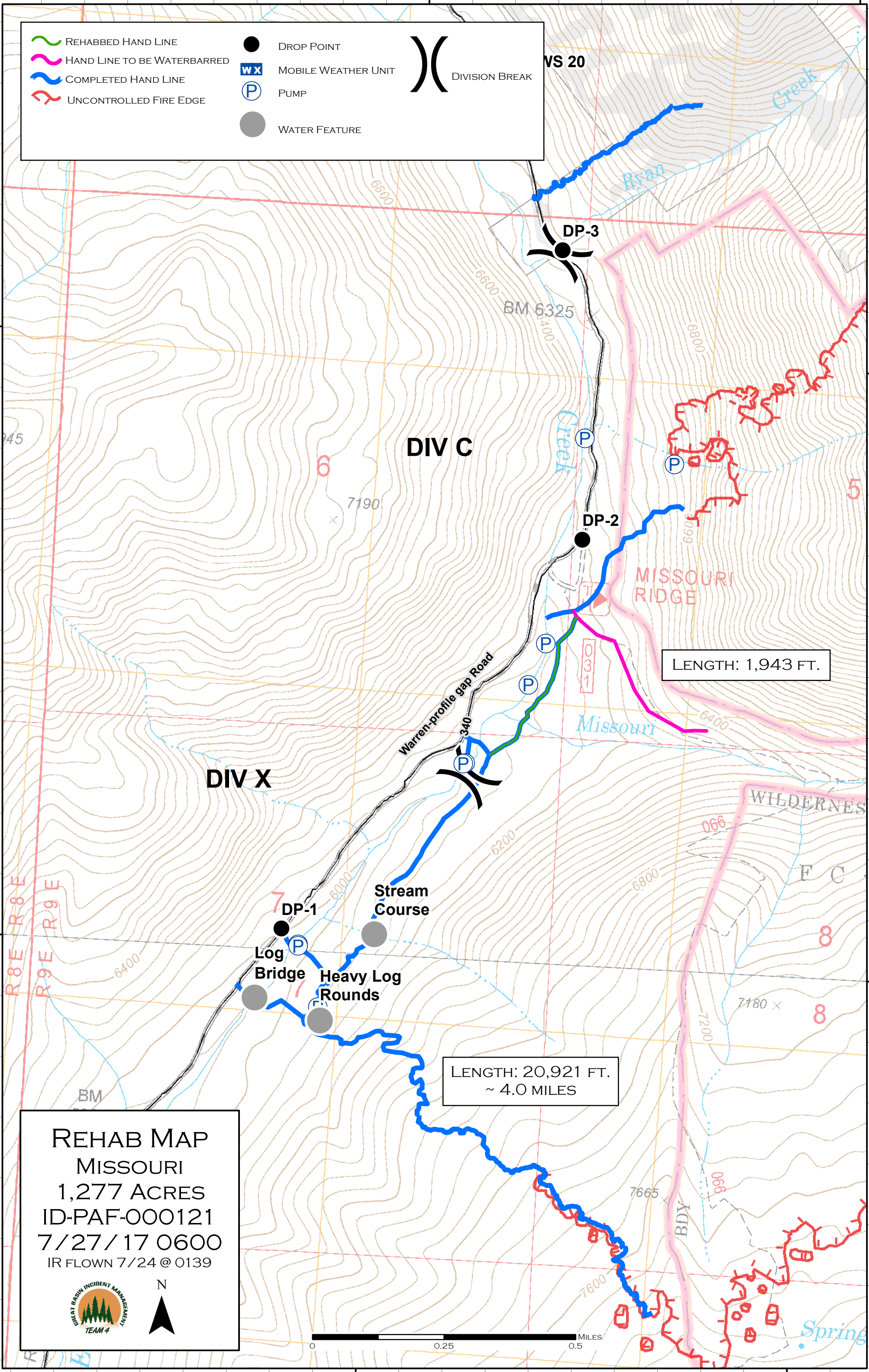

	REHABBED HAND LINE		DROP POINT		DIVISION BREAK
	HAND LINE TO BE WATERBARRED		MOBILE WEATHER UNIT		
	COMPLETED HAND LINE		PUMP		
	UNCONTROLLED FIRE EDGE		WATER FEATURE		



LENGTH: 1,943 FT.

LENGTH: 20,921 FT.
~ 4.0 MILES

REHAB MAP
MISSOURI
 1,277 ACRES
 ID-PAF-000121
 7/27/17 0600
 IR FLOWN 7/24 @ 0139



N

