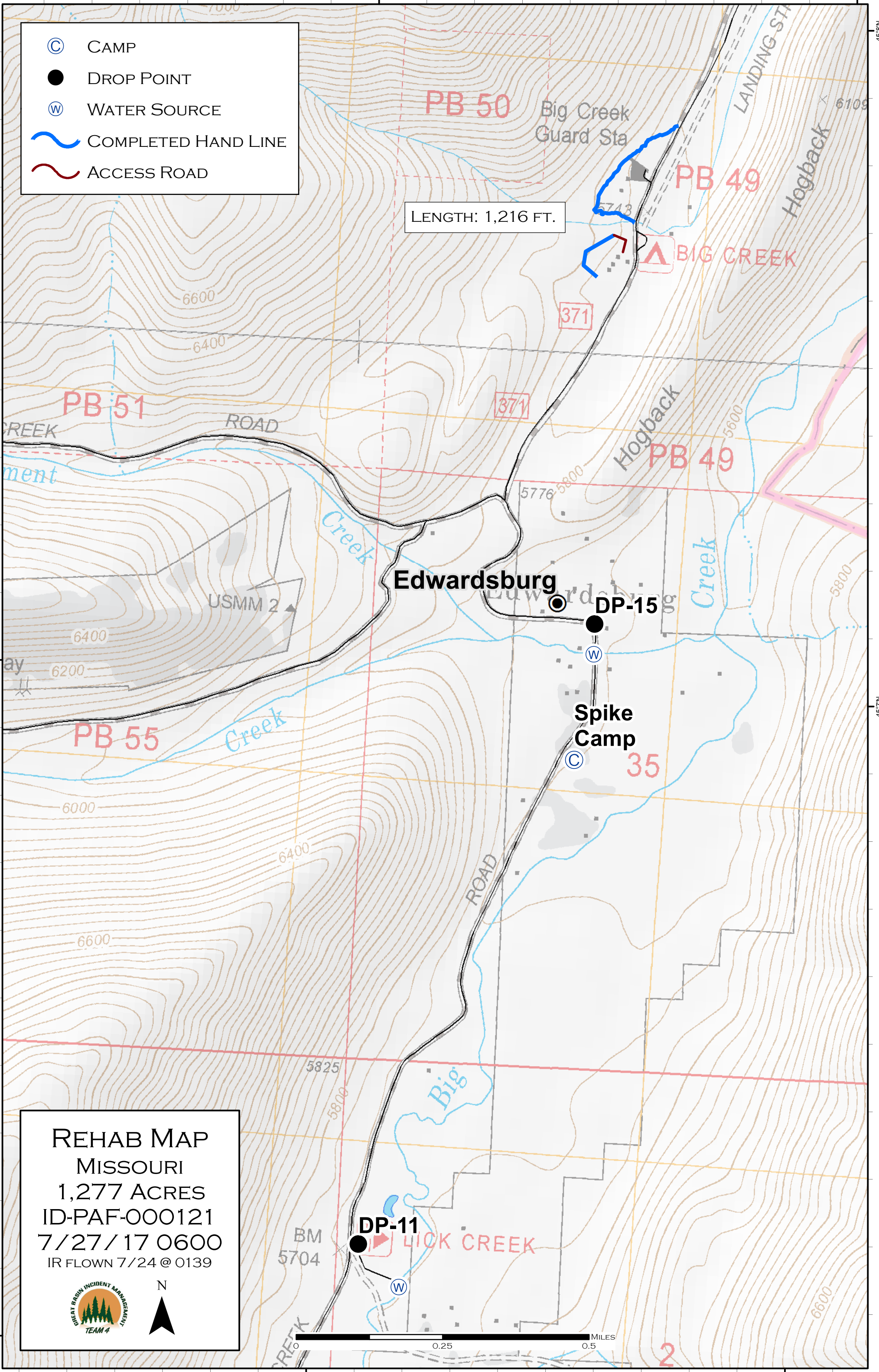



- Ⓒ CAMP
- DROP POINT
- Ⓜ WATER SOURCE
- ~ COMPLETED HAND LINE
- ~ ACCESS ROAD



LENGTH: 1,216 FT.

**REHAB MAP**  
 MISSOURI  
 1,277 ACRES  
 ID-PAF-000121  
 7/27/17 0600  
 IR FLOWN 7/24 @ 0139



N  
